

77°35'

77°32' 30"

77°30'

77°27' 30"

77°25'

# AQUIFER THICKNESS

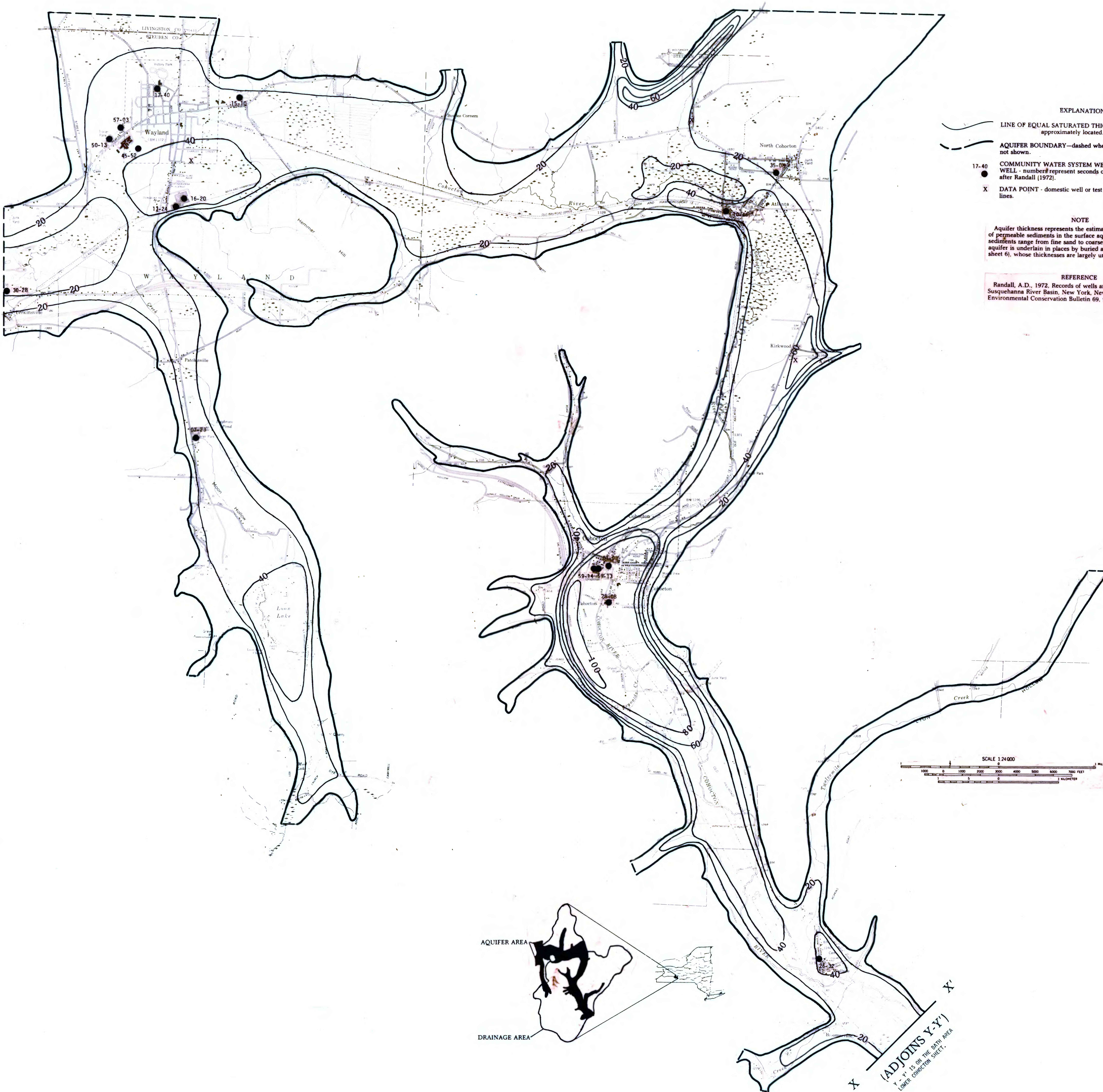
By  
David B. Terry and Timothy S. Pagano

42°35'

42°32' 30"

42°30'

42°27' 30"



## EXPLANATION

LINE OF EQUAL SATURATED THICKNESS OF AQUIFER - approximately located. Contour interval: 20 feet.

AQUIFER BOUNDARY—dashed where full extent of aquifer is not shown.

17-40  
● COMMUNITY WATER SYSTEM WELL OR INDUSTRIAL WELL - number# represent seconds of latitude and longitude, after Randall (1972).

X DATA POINT - domestic well or test hole used to draw thickness lines.

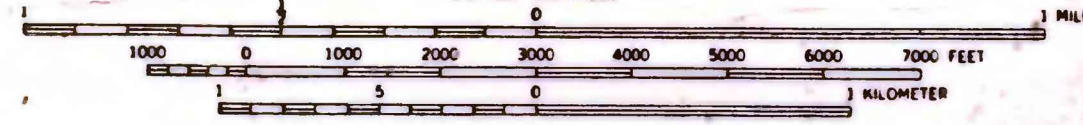
## NOTE

Aquifer thickness represents the estimated saturated thickness of permeable sediments in the surface aquifer. Permeable sediments range from fine sand to coarse gravel. The surface aquifer is underlain in places by buried aquifers (see Well Yield, sheet 6), whose thicknesses are largely unknown.

## REFERENCE

Randall, A.D., 1972. Records of wells and test borings in the Susquehanna River Basin, New York, New York State Dept. of Environmental Conservation Bulletin 69, 92 p.

SCALE 1:24,000



AQUIFER AREA

DRAINAGE AREA

(ADJOINS X-Y)  
X-Y IS ON THE DATA AREA  
LOWER COHOCTON SHEET.