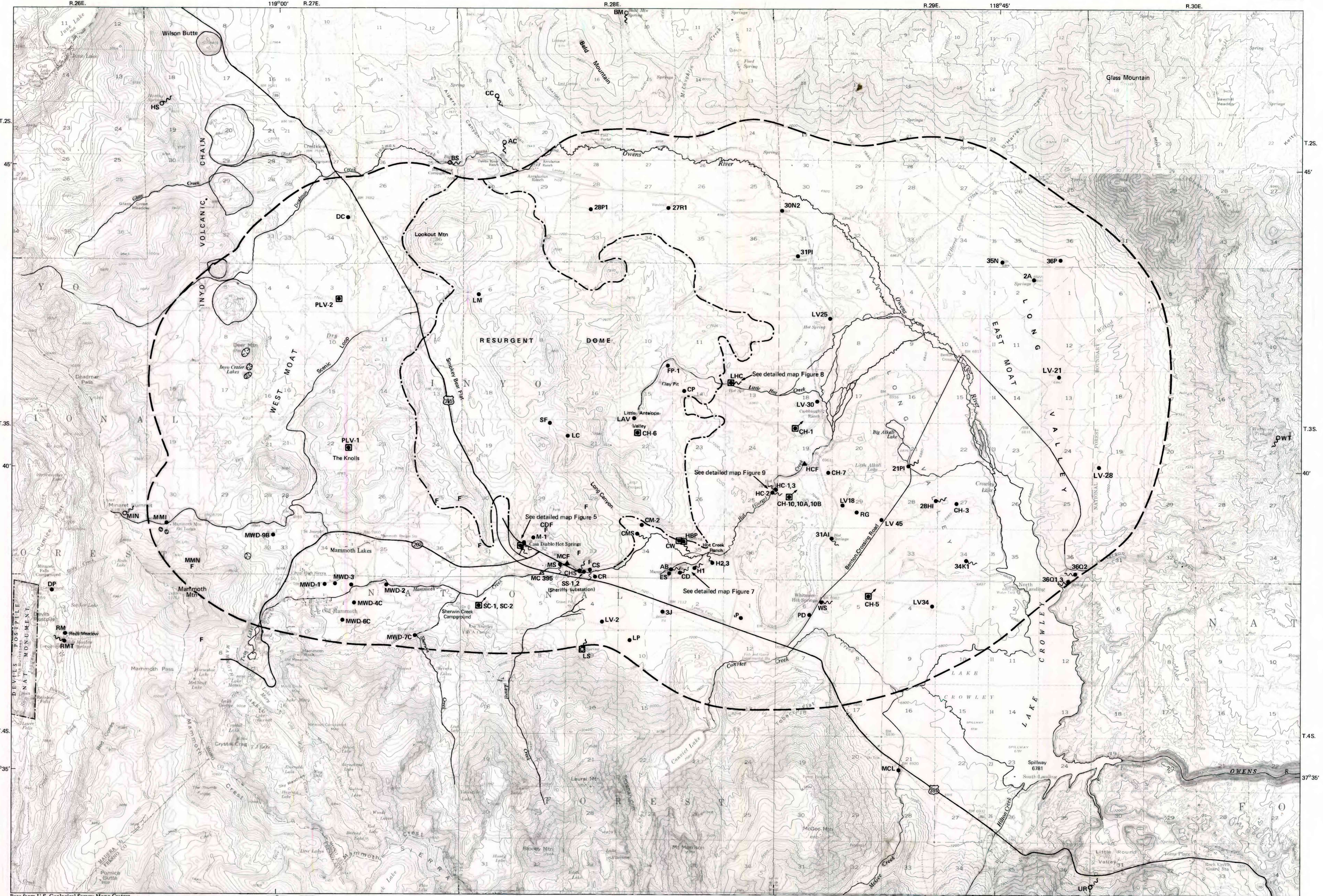
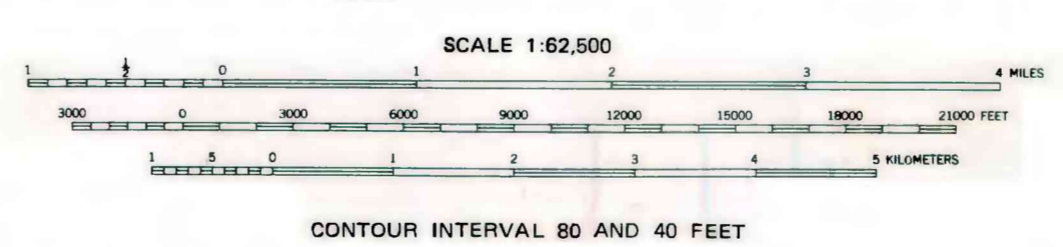


- EXPLANATION**
- Outline of caldera floor, after Bailey and Koepfen, 1974
 - - - Outline of volcanic rocks of the resurgent dome, after Bailey and Koepfen, 1974
 - LV34 Well location (non-recording)
 - CH-1 Well location (recording site)
 - CH-5 Well location (telemetry site)
 - CD Hot spring location
 - HBP Hot spring location (recording site)
 - BS Cold spring station
 - LS Cold spring location (recording site)
 - ▲ MC395 Surface water site
 - ▲ MCF Surface water site (with recorder)
 - F Fumarole
 - Paved roads
 - Recent rhyolite domes of the Inyo Volcanic chain, after Miller, 1985
 - Recent phreatic craters of the Inyo Volcanic chain, after Miller, 1985



Base from U.S. Geological Survey Mono Craters, Devils Postpile, Mt. Morrison, Casa Diablo, California, 1:62,500, 1953; Cow Track Mtn., Glass Mtn., California, 1:62,500, 1962.



MAP OF THE LONG VALLEY AREA, MONO COUNTY, CALIFORNIA SHOWING LOCATIONS OF WELLS, SPRINGS, SURFACE WATER SITES, AND FUMAROLES