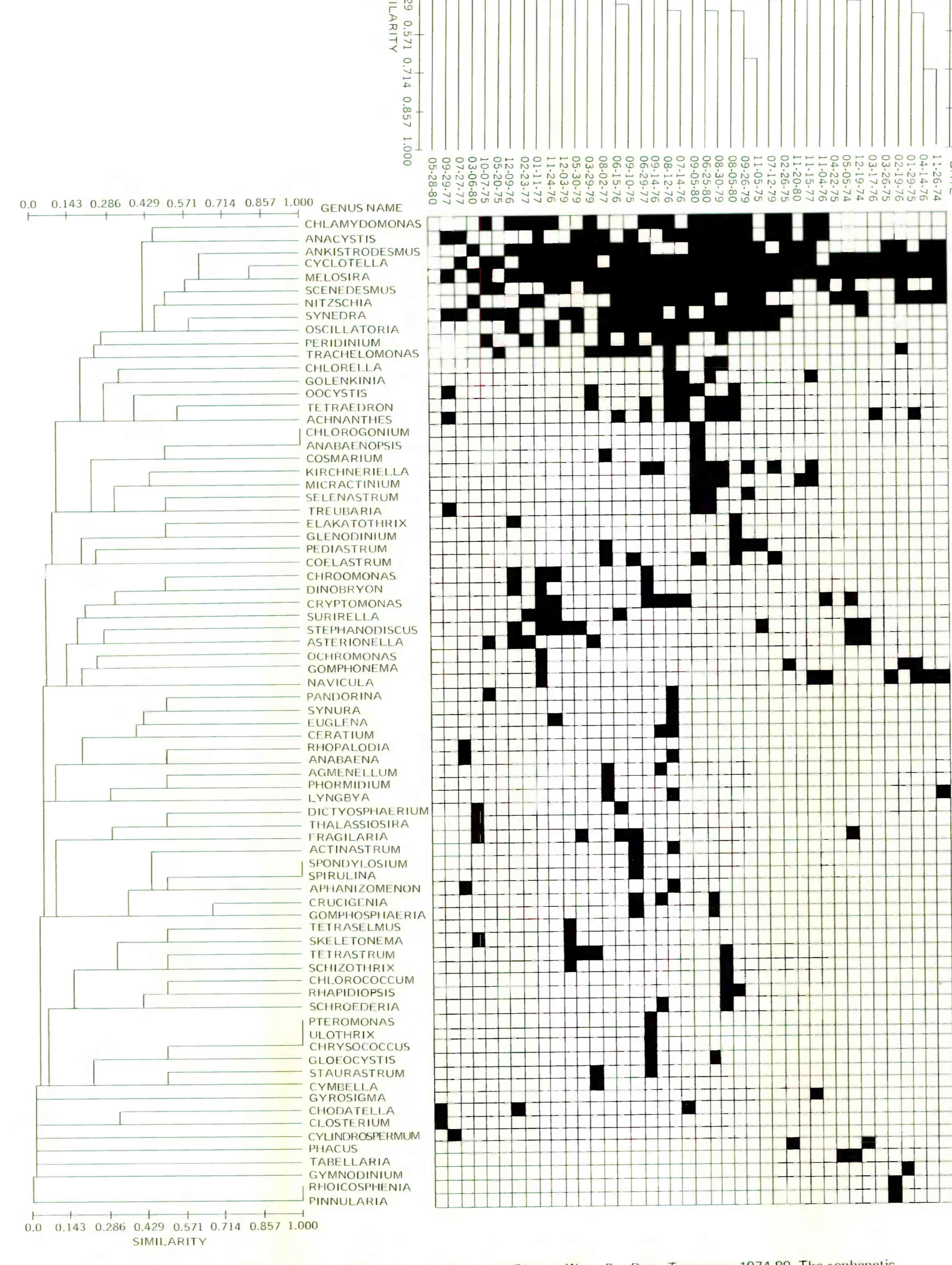
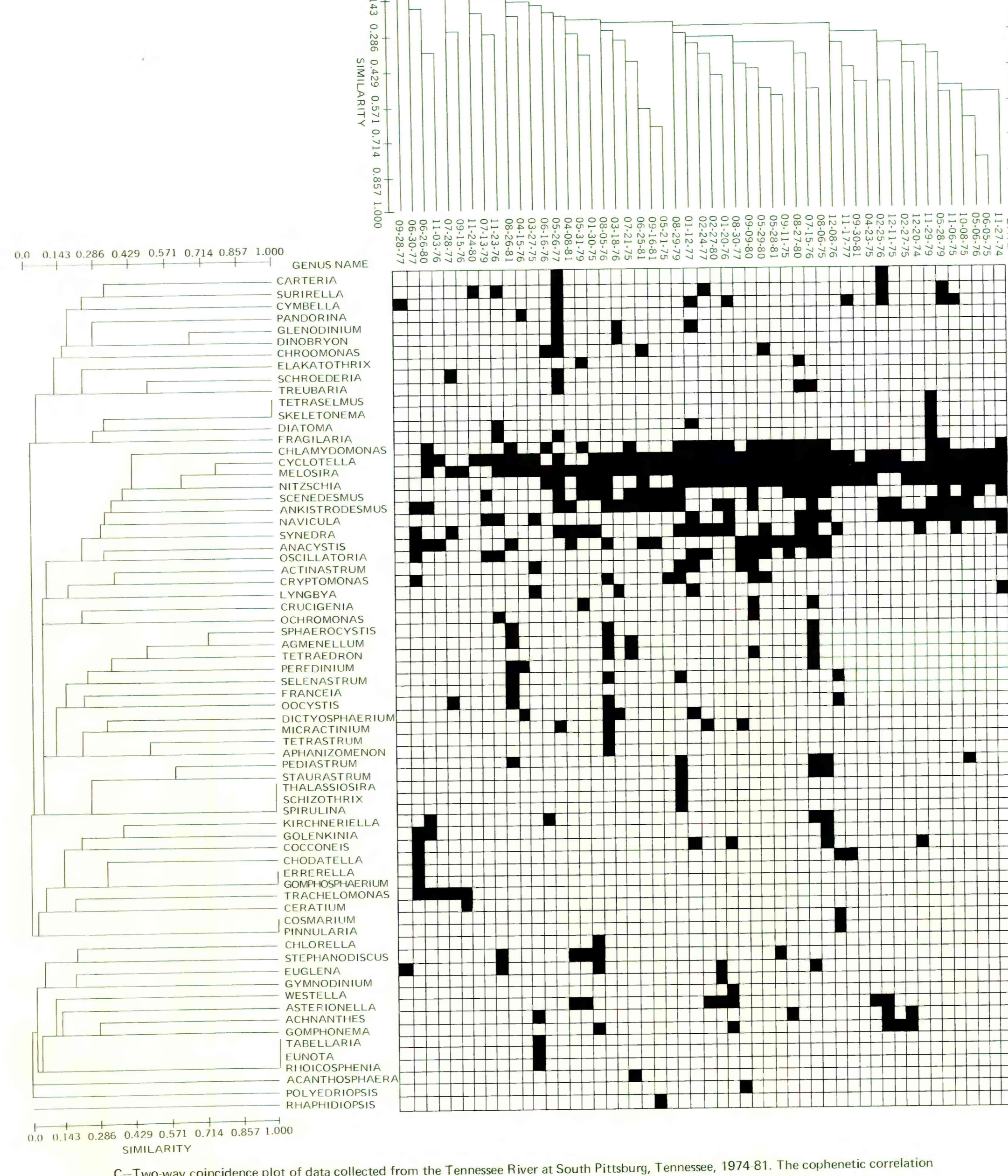


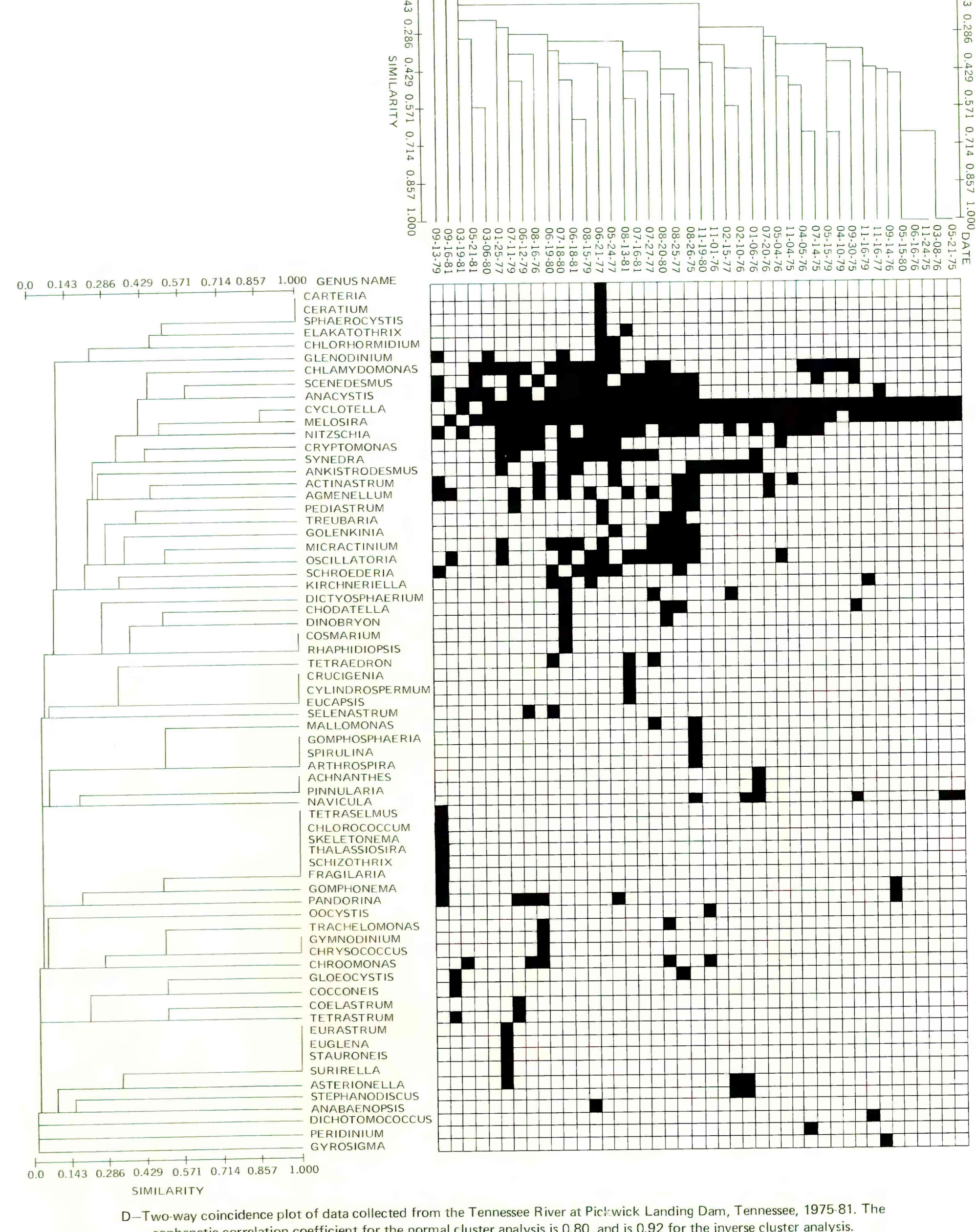
A—Two-way coincidence plot of data collected from the French Broad River near Knoxville, Tennessee, 1974-81. The cophenetic correlation coefficient for the normal cluster analysis is 0.82, and is 0.91 for the inverse cluster analysis.



B—Two-way coincidence plot of data collected from the Tennessee River at Watts Bar Dam, Tennessee, 1974-80. The cophenetic correlation coefficient for the normal cluster analysis is 0.77, and is 0.80 for the inverse cluster analysis.



C—Two-way coincidence plot of data collected from the Tennessee River at South Pittsburg, Tennessee, 1974-81. The cophenetic correlation coefficient for the normal cluster analysis is 0.74, and is 0.83 for the inverse cluster analysis.



D—Two-way coincidence plot of data collected from the Tennessee River at Pictwick Landing Dam, Tennessee, 1975-81. The cophenetic correlation coefficient for the normal cluster analysis is 0.80, and is 0.92 for the inverse cluster analysis.

TWO-WAY COINCIDENCE PLOTS OF DATA COLLECTED FROM THE TENNESSEE RIVER, TENNESSEE