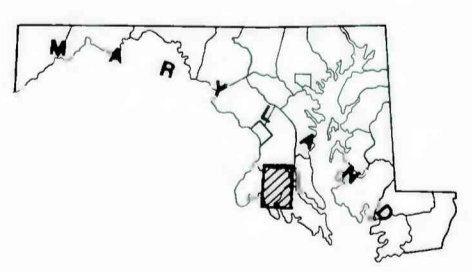
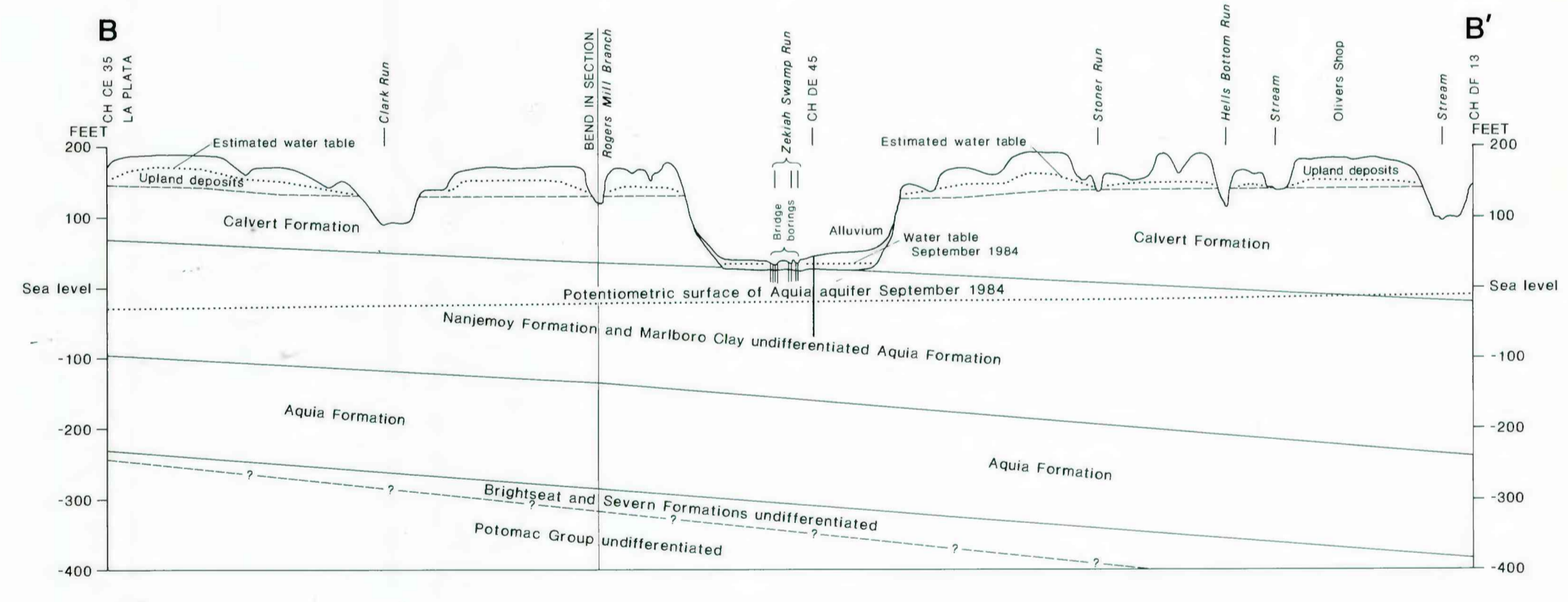
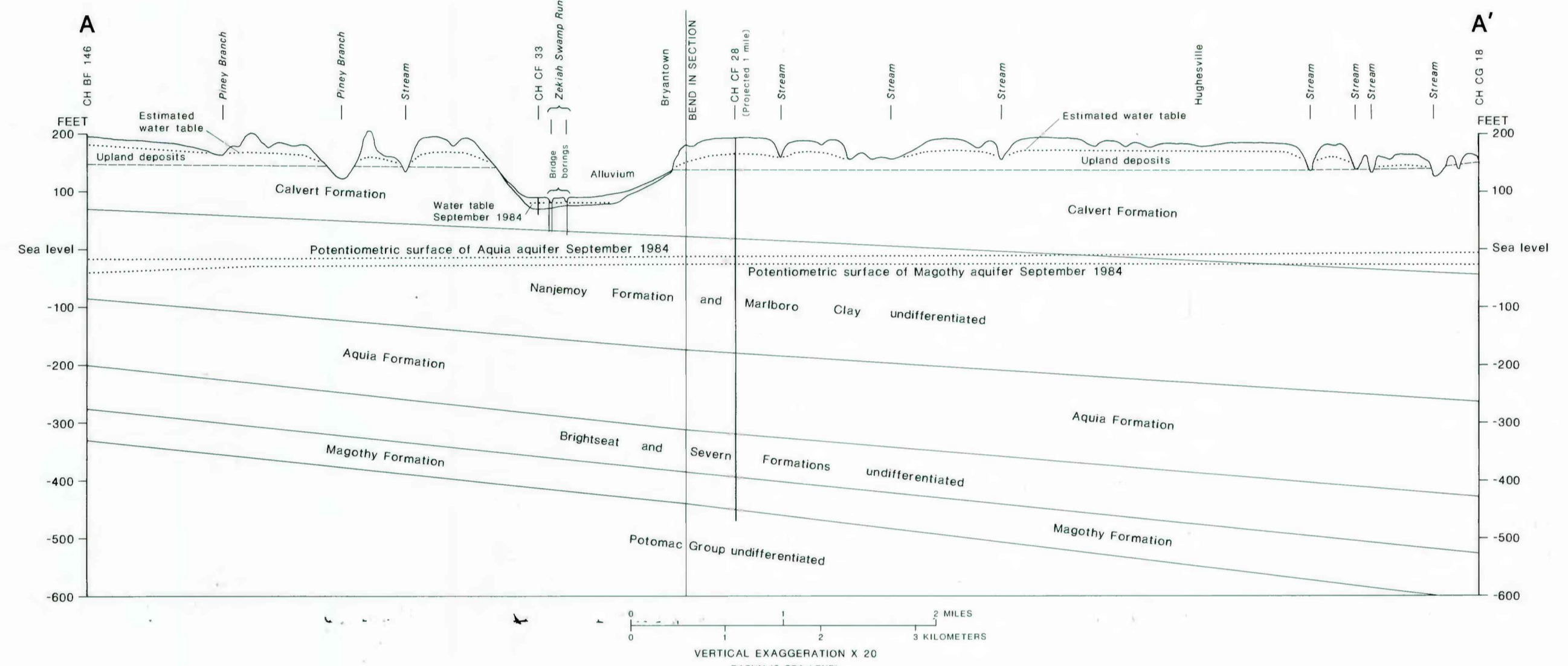


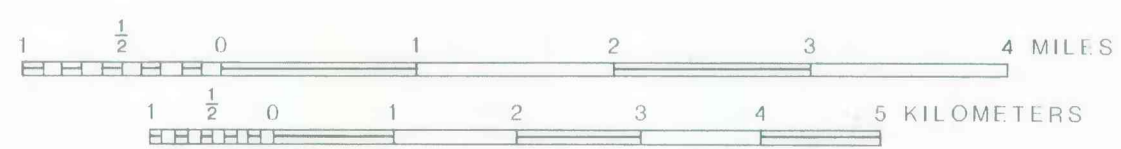
EXPLANATION

- CH EE 90 Well and number
- ▲ 12 Stream measurement site and number
- Basin boundary, Zekiah Swamp Run
- Approximate southern limit of Magothy aquifer (Mack and others, 1985)
- A—A' Location of section



MAP AND HYDROGEOLOGIC CROSS SECTIONS, ZEKIAH SWAMP RUN BASIN AND ADJACENT AREAS, CHARLES AND PRINCE GEORGES COUNTIES, MARYLAND, SHOWING TOPOGRAPHY AND LOCATION OF DATA-COLLECTION SITES.

Base from Maryland Geological Survey county topographic map, 1:62,500



CONTOUR INTERVAL 20 FEET
National Geodetic Vertical Datum of 1929