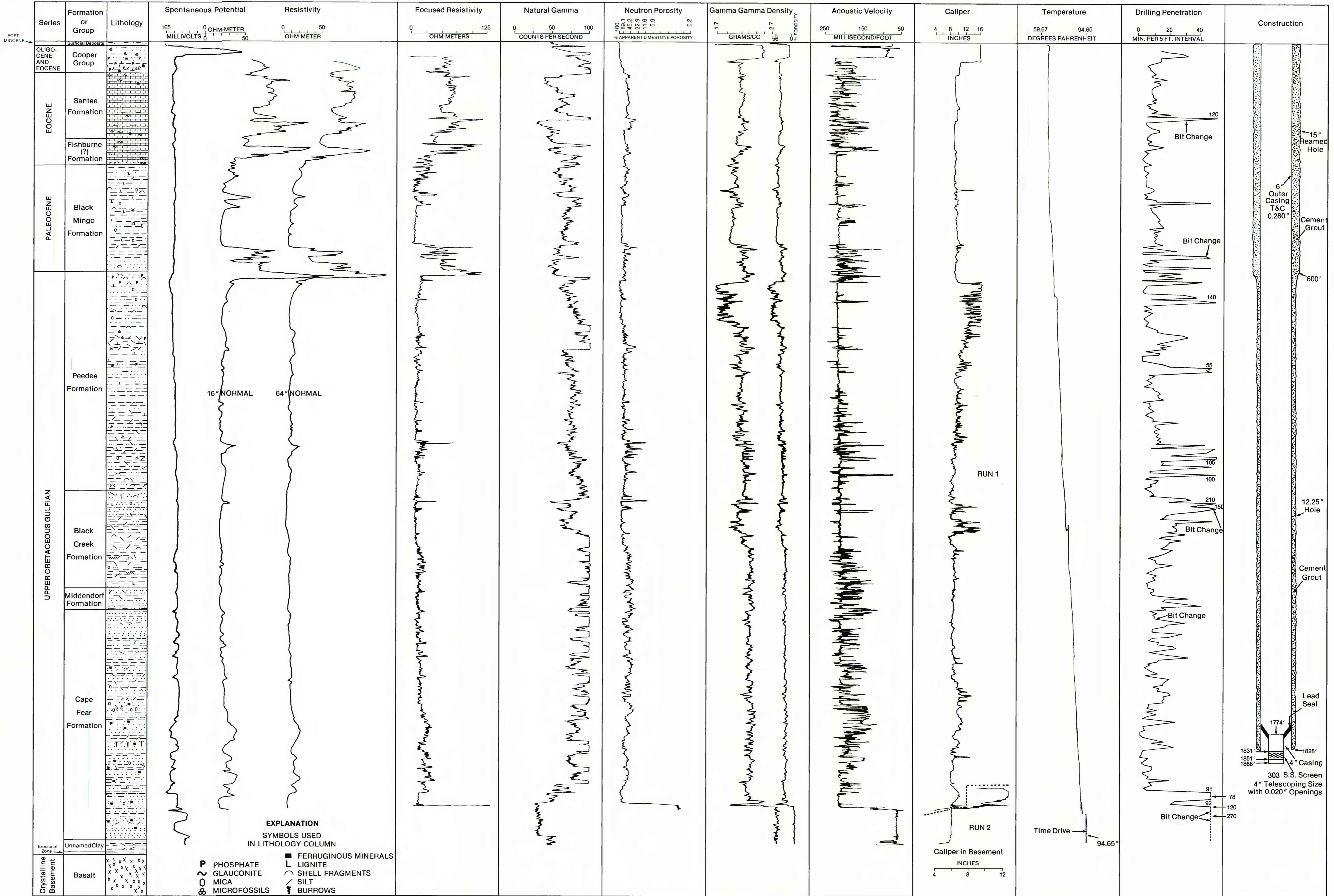


ALTITUDE OF LAND SURFACE, 78 FEET.

DEPTH, IN FEET BELOW LAND SURFACE

TOTAL DEPTH, 2067 FEET.



**HYDROLOGIC AND GEOLOGIC ANALYSIS OF A WELL IN DORCHESTER COUNTY, SOUTH CAROLINA**

by  
M.S. Reid, W.R. Aucott, R.W. Lee, and L.A. Renken