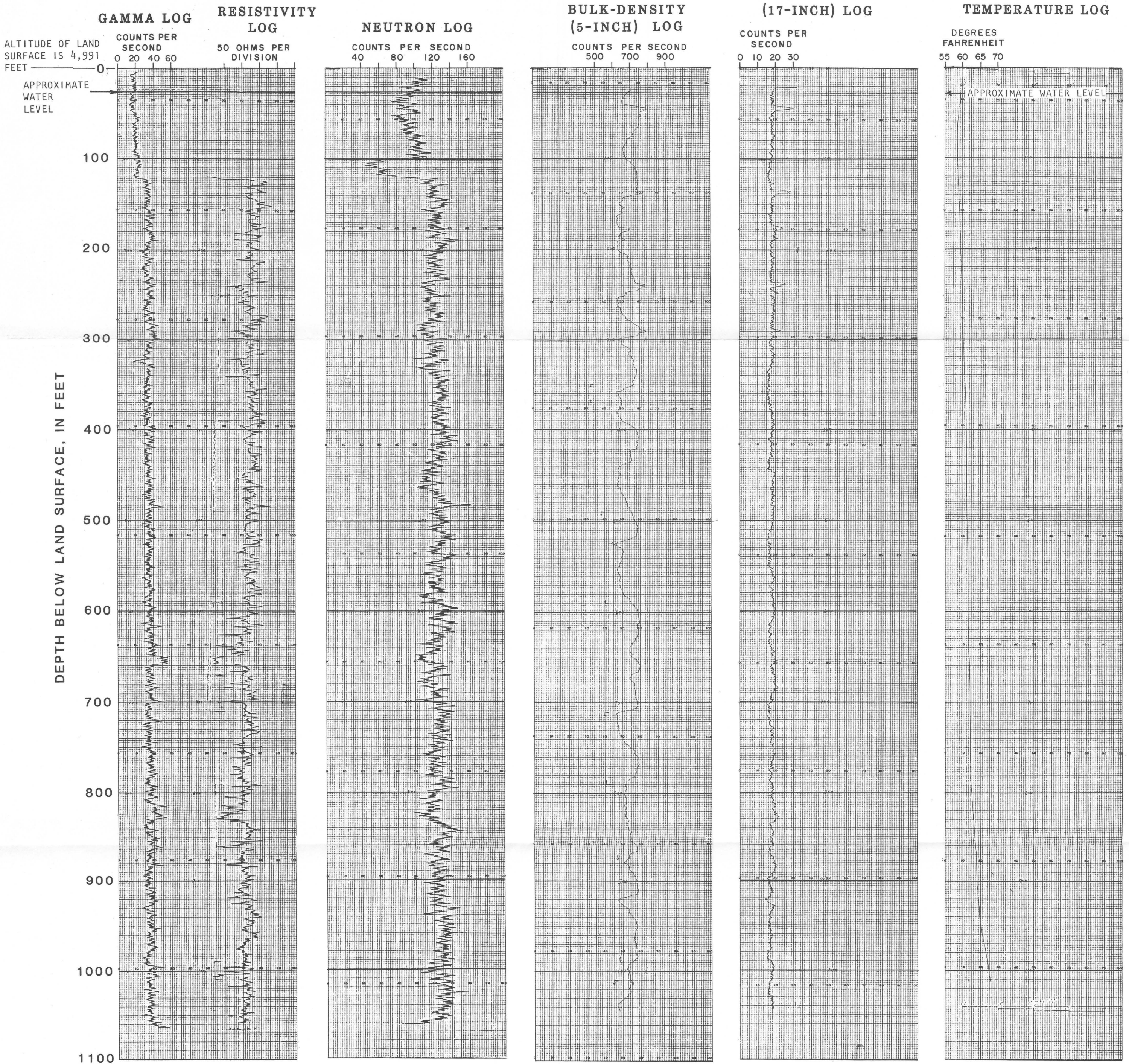




(200)
b.R.
no. 86-4187



GAMMA, RESISTIVITY, AND NEUTRON LOGS WERE MADE IN AN UNCASD, MUD-FILLED BOREHOLE. BULK-DENSITY LOGS WITH 5- AND 17-INCH SPACING BETWEEN THE EMITTER AND RECEIVER WERE MADE INSIDE A 2-INCH-DIAMETER PVC PIPE SET INSIDE 6-INCH-DIAMETER STEEL CASING FILLED WITH AQUIFER FLUID.