
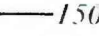
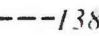
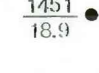
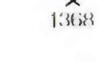
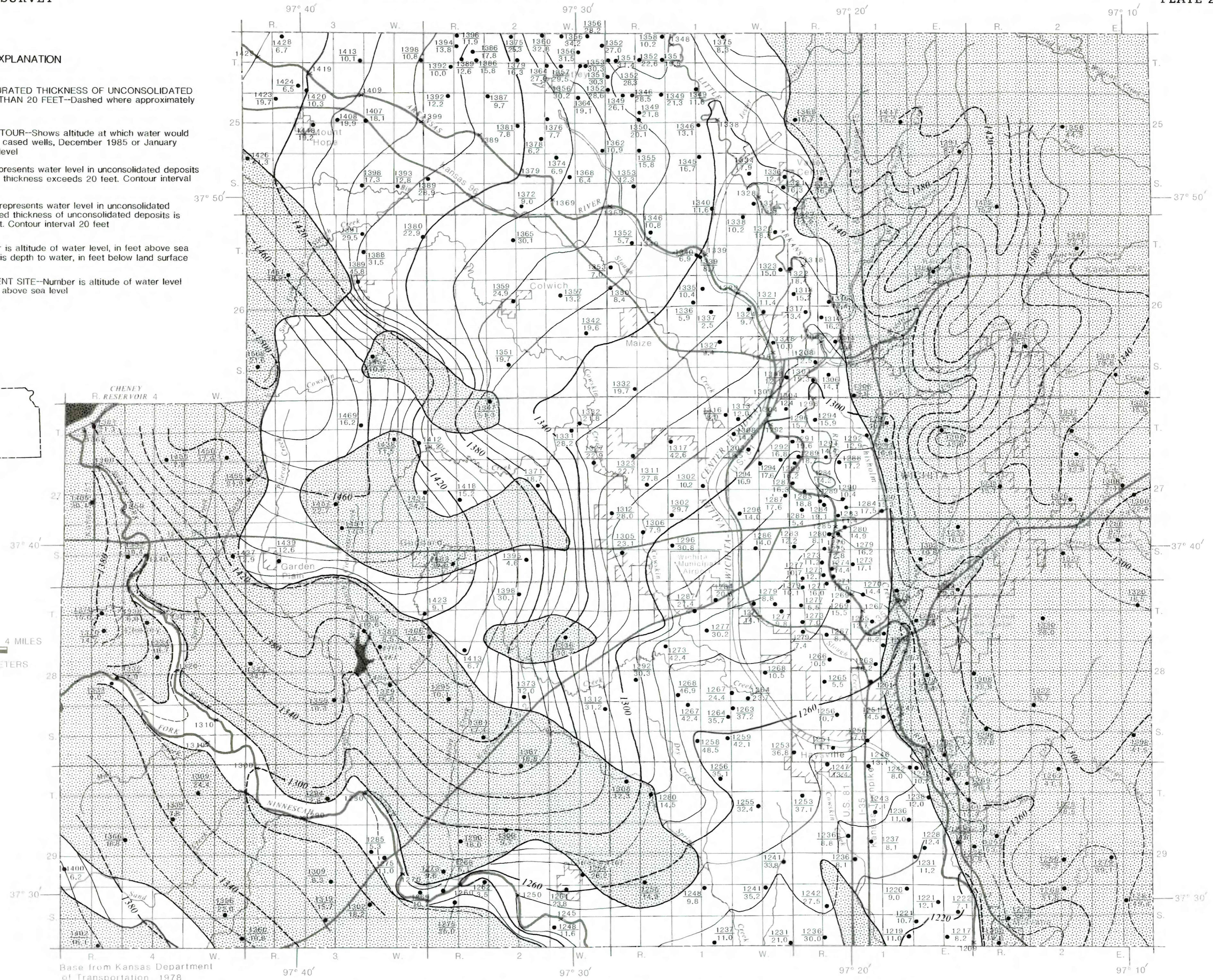
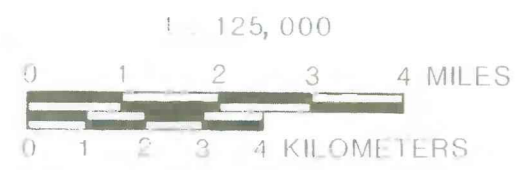
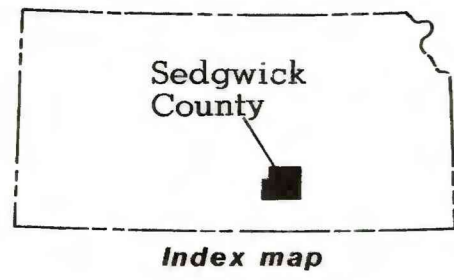


EXPLANATION

-  AREA WHERE SATURATED THICKNESS OF UNCONSOLIDATED DEPOSITS IS LESS THAN 20 FEET--Dashed where approximately located
- WATER-LEVEL CONTOUR--Shows altitude at which water would have stood in tightly cased wells, December 1985 or January 1986. Datum is sea level
-  1500 Solid contour represents water level in unconsolidated deposits where saturated thickness exceeds 20 feet. Contour interval 10 feet
-  1380 Dashed contour represents water level in unconsolidated rocks or saturated thickness of unconsolidated deposits is less than 20 feet. Contour interval 20 feet
-  1451  
18.9 WELL--Upper number is altitude of water level, in feet above sea level. Lower number is depth to water, in feet below land surface
-  1368 STAGE-MEASUREMENT SITE--Number is altitude of water level in the stream, in feet above sea level

KANSAS



Base from Kansas Department of Transportation, 1978

MAP SHOWING GROUND-WATER LEVELS AND DEPTHS TO WATER IN SEDGWICK COUNTY, KANSAS

By  
Hugh E. Bevans  
1988