


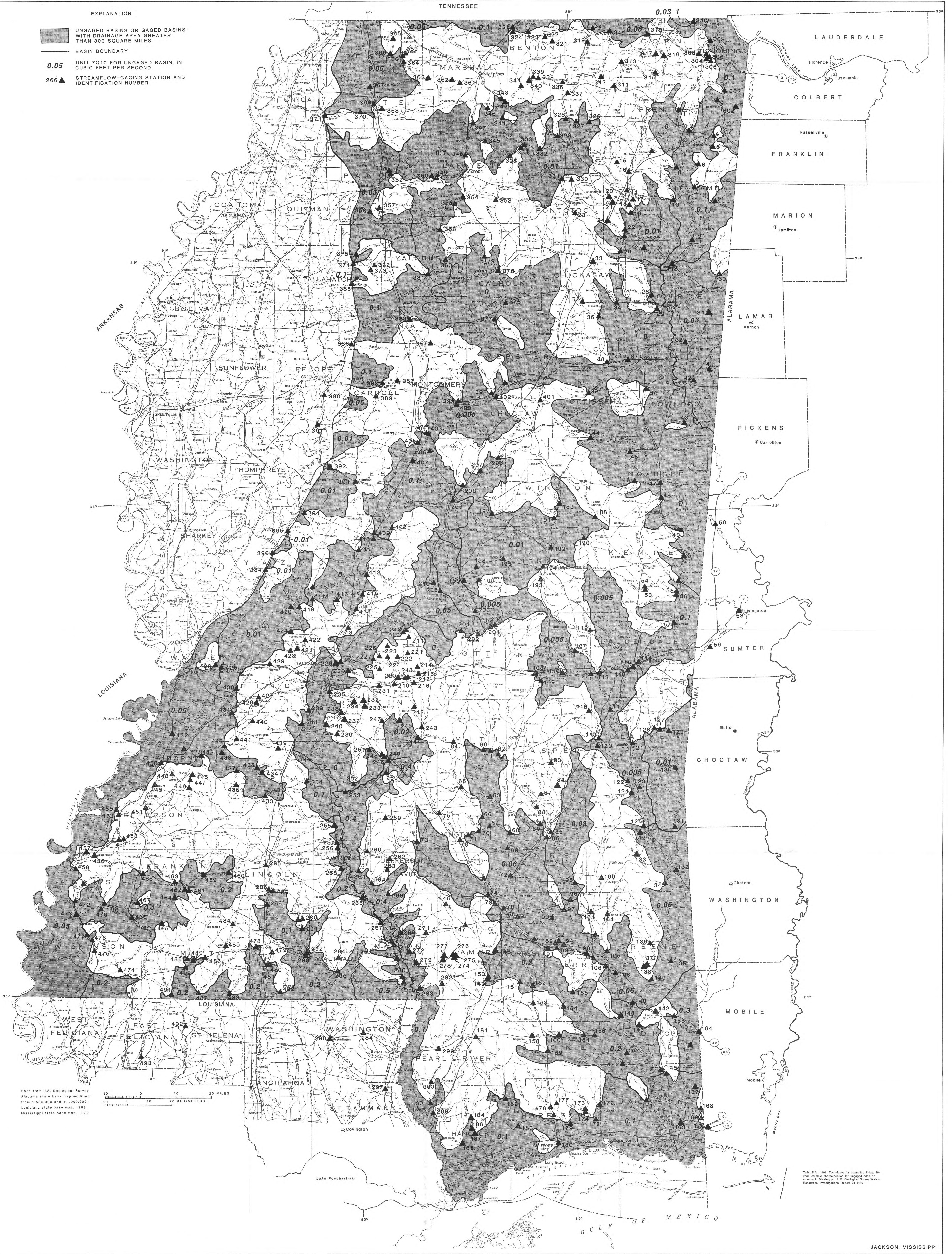
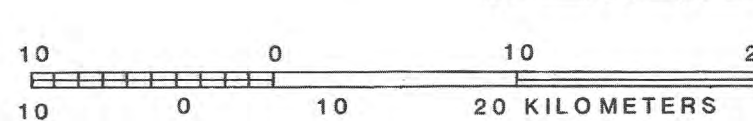


EXPLANATION

-  UNGAGED BASINS OR GAGED BASINS WITH DRAINAGE AREA GREATER THAN 300 SQUARE MILES
-  BASIN BOUNDARY
- 0.05** UNIT 7Q10 FOR UNGAGED BASIN, IN CUBIC FEET PER SECOND
-  266 ▲ STREAMFLOW-GAGING STATION AND IDENTIFICATION NUMBER



Base from U.S. Geological Survey
Alabama state base map modified
from 1:500,000 and 1:1,000,000
Louisiana state base map, 1968
Mississippi state base map, 1972



Note: P.A. 1992. Techniques for estimating 7-day, 10-year low-flow characteristics for ungauged sites on streams in Mississippi. U.S. Geological Survey Water-Resources Investigations Report 91-4130.

Map showing locations of streamflow gaging stations and unit-7Q10 values for ungauged basins.