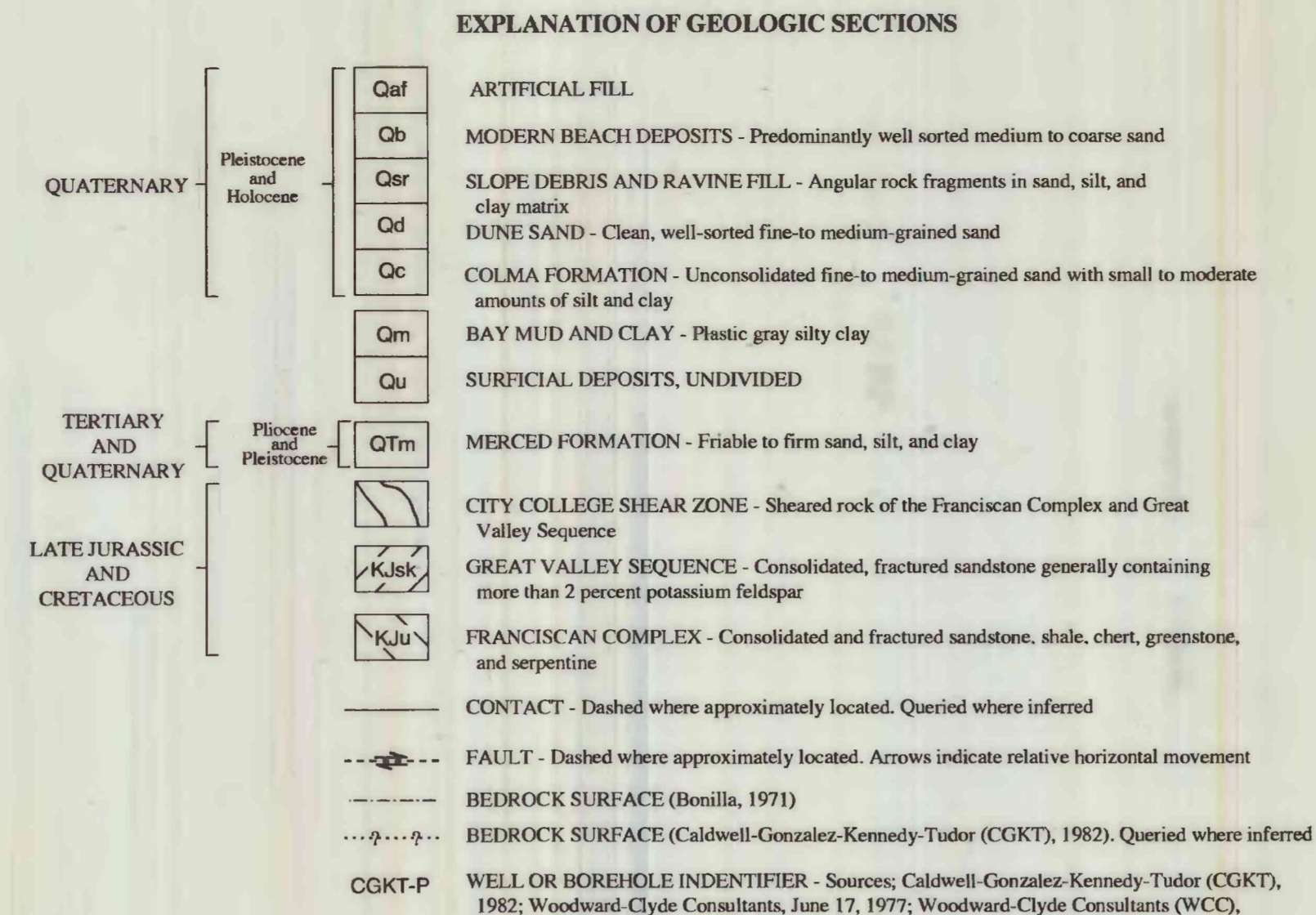
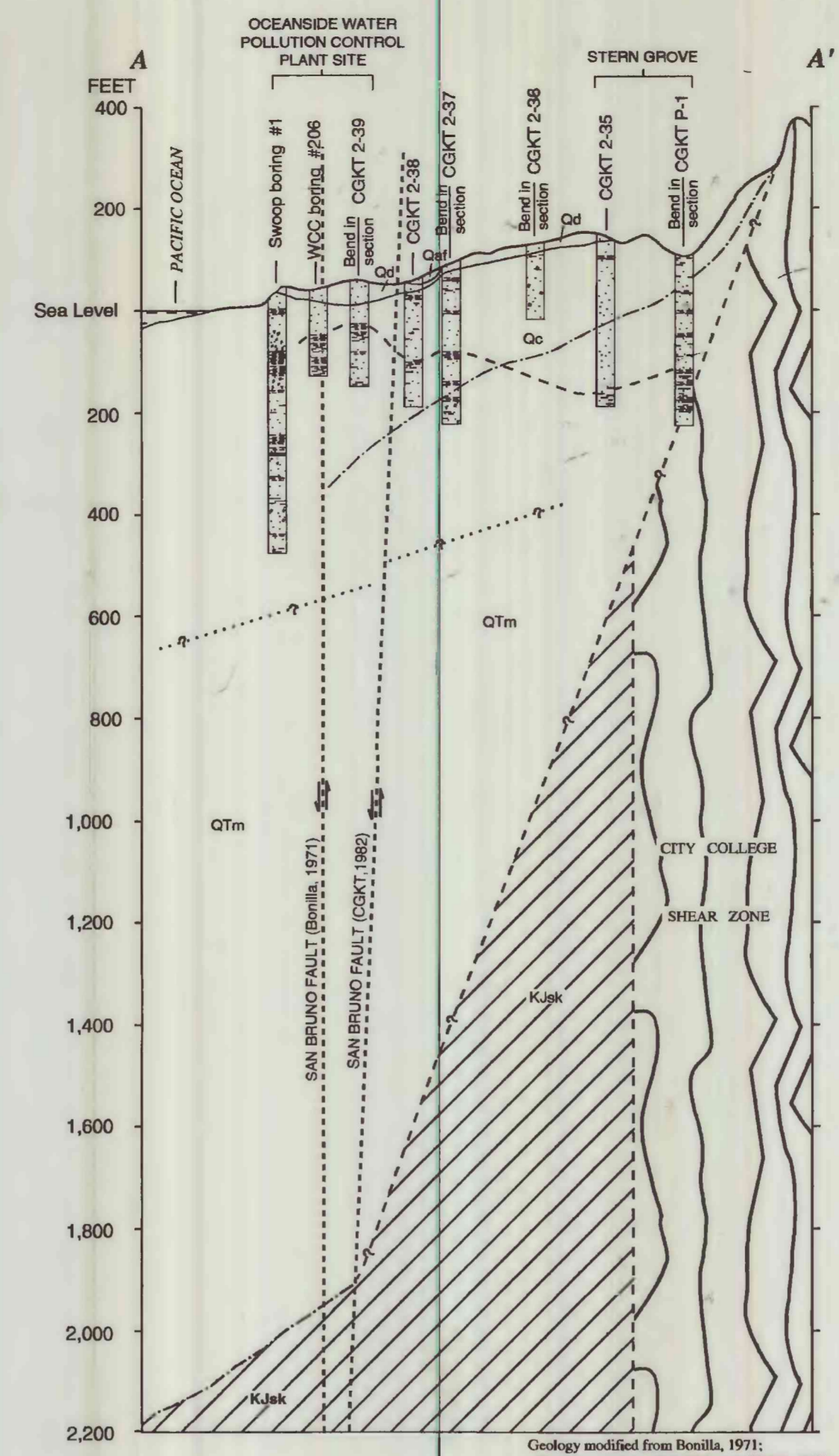
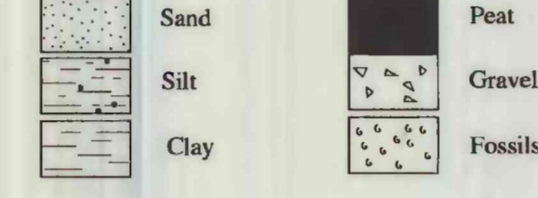


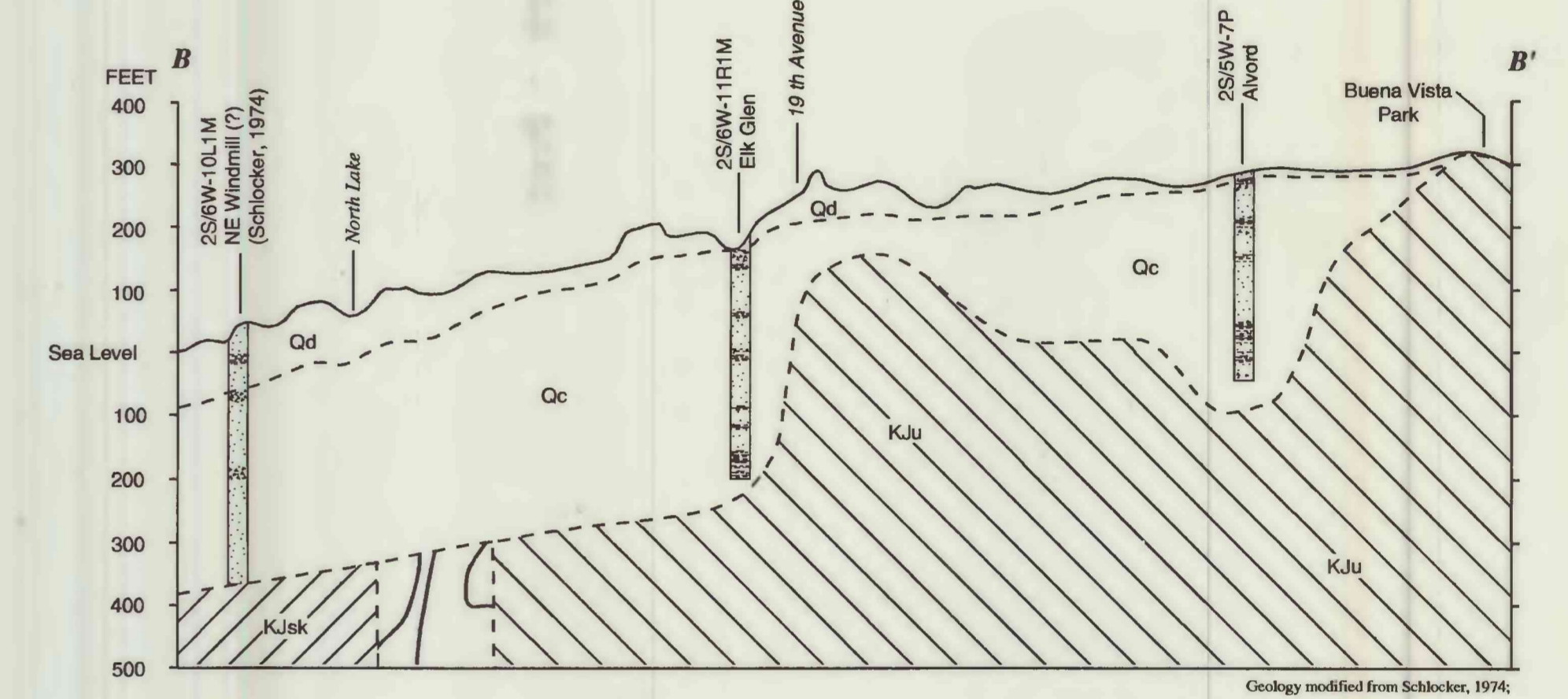
A. San Francisco County showing locations of geologic sections



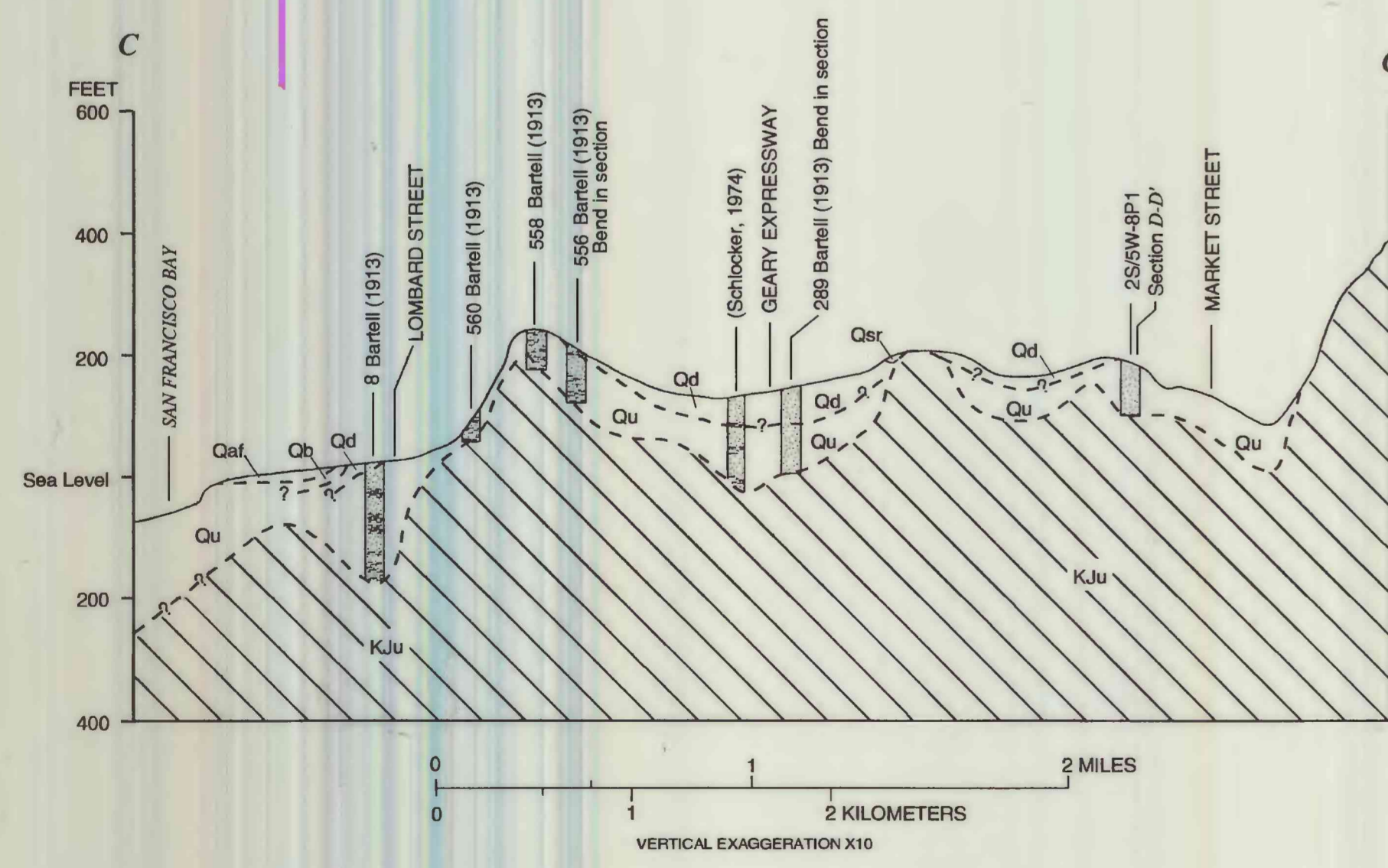
BOREHOLE LITHOLOGY



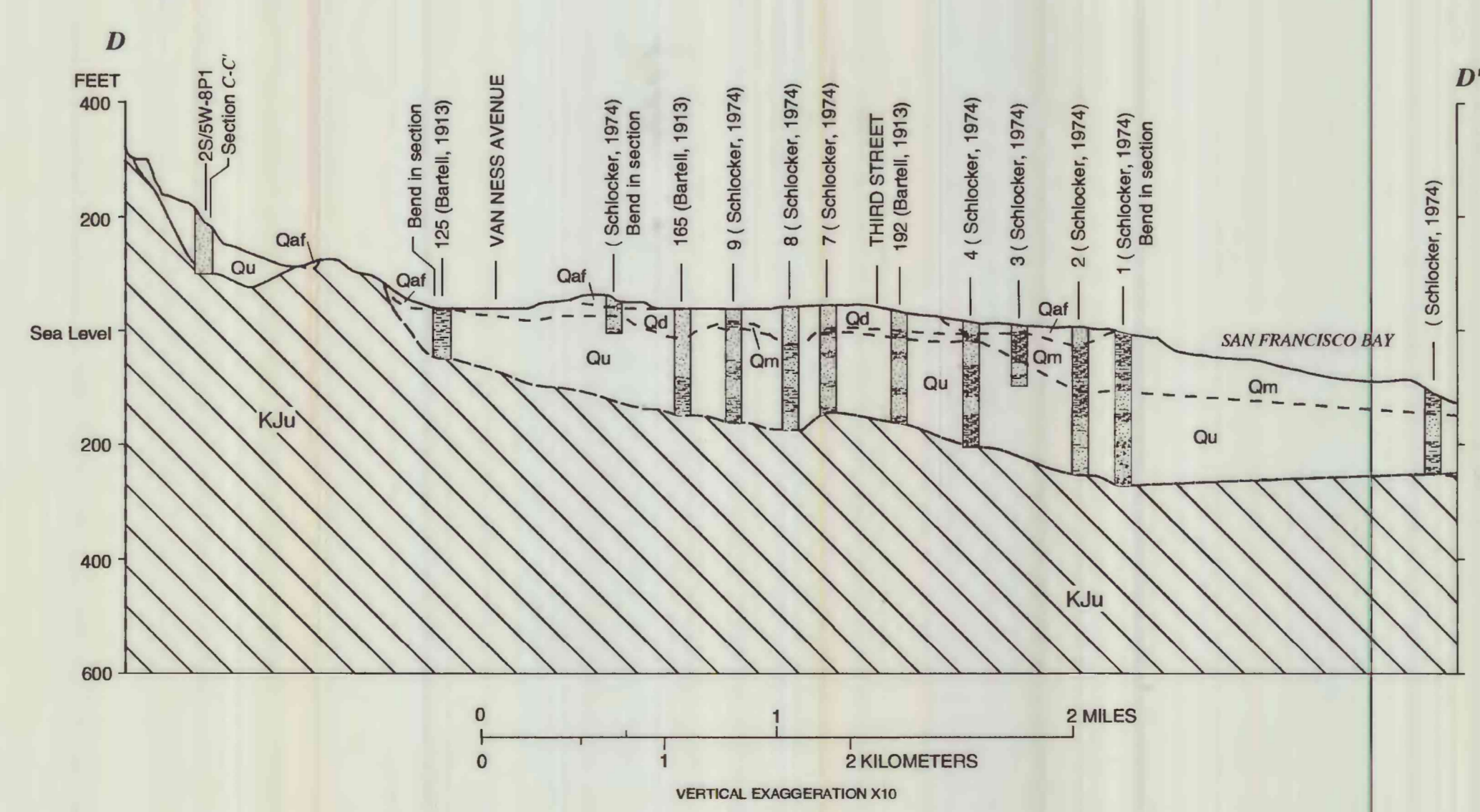
B. Geologic section A-A' along an east-west line through the Lake Merced area



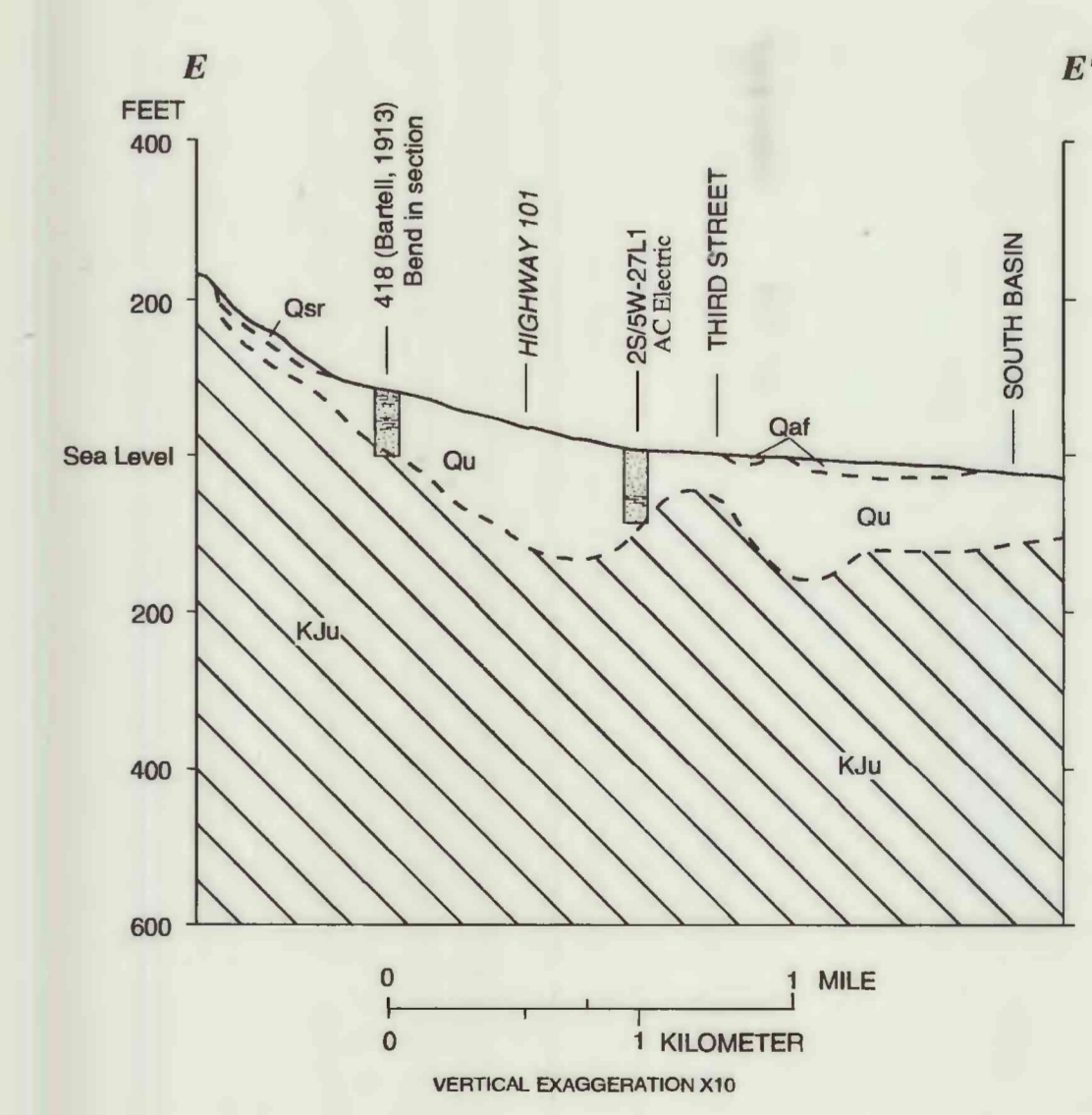
C. Geologic section B-B' along an east-west line through Golden Gate Park



D. Geologic section C-C' along a north-south line through northern San Francisco



E. Geologic section D-D' along a northeast-southwest line through northeastern San Francisco



F. Geologic section E-E' along an east-west line through eastern San Francisco

GENERALIZED GEOLOGIC SECTIONS THROUGH SAN FRANCISCO, CALIFORNIA

By
Steven P. Phillips, Scott N. Hamlin, and Eugene B. Yates
1993

Phillips, S.P., Hamlin, S.N., and Yates, E.B., 1993. Geology, water quality, and estimation of ground-water recharge, in San Francisco, California, 1987-92. U.S. Geological Survey Water-Resources Investigations Report 93-4019.