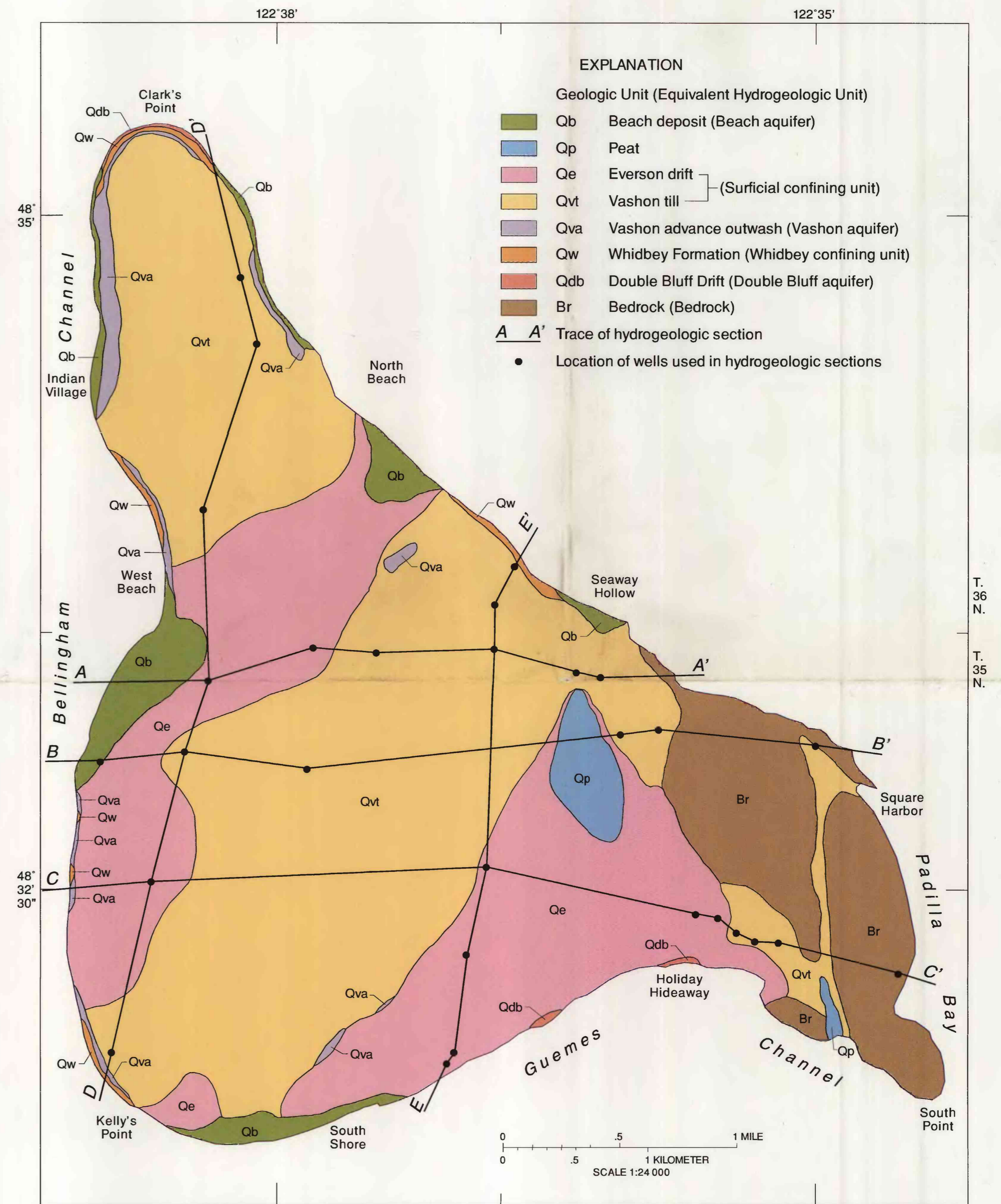
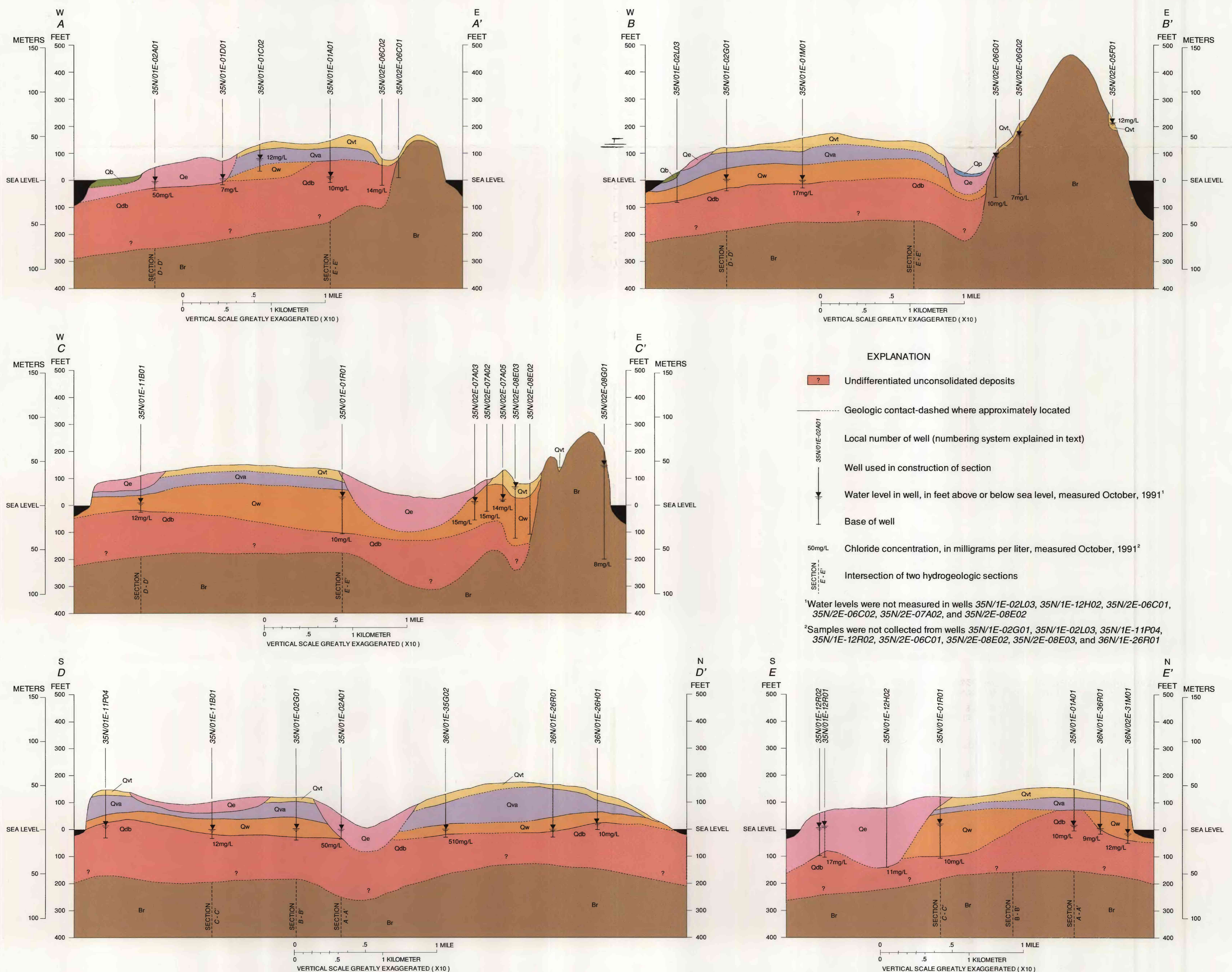


(a) Location of inventoried wells used to collect geologic and hydrologic data



(b) Surficial geology with location of hydrogeologic sections



(c) Hydrogeologic sections A-A' through E-E'

MAPS SHOWING THE LOCATIONS OF INVENTORIED WELLS AND SURFICIAL GEOLOGY, AND
HYDROGEOLOGIC SECTIONS ON GUEMES ISLAND, SKAGIT COUNTY, WASHINGTON

By
S.C. Kahle and T.D. Olsen
1995