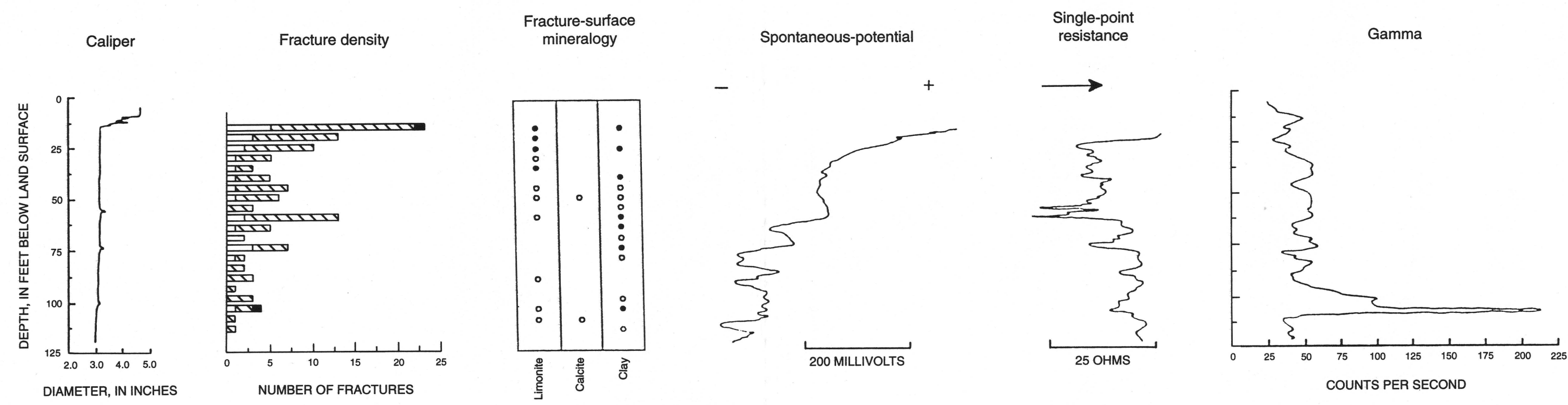


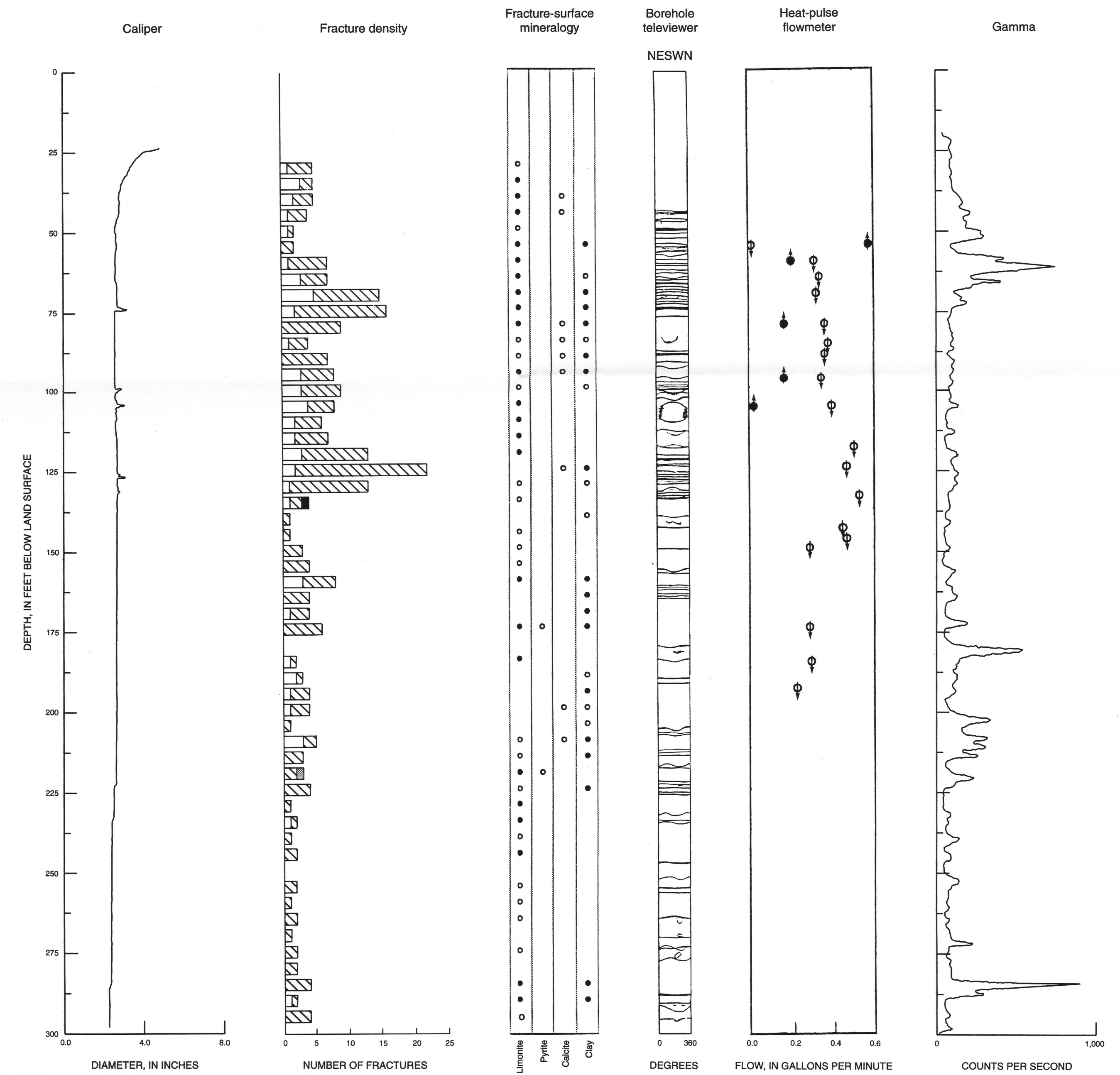
(200)  
WRI  
no. 95-4136

U.S. GEOLOGICAL SURVEY  
RESTON, VA.  
SEP 09 1997  
SR  
LIBRARY

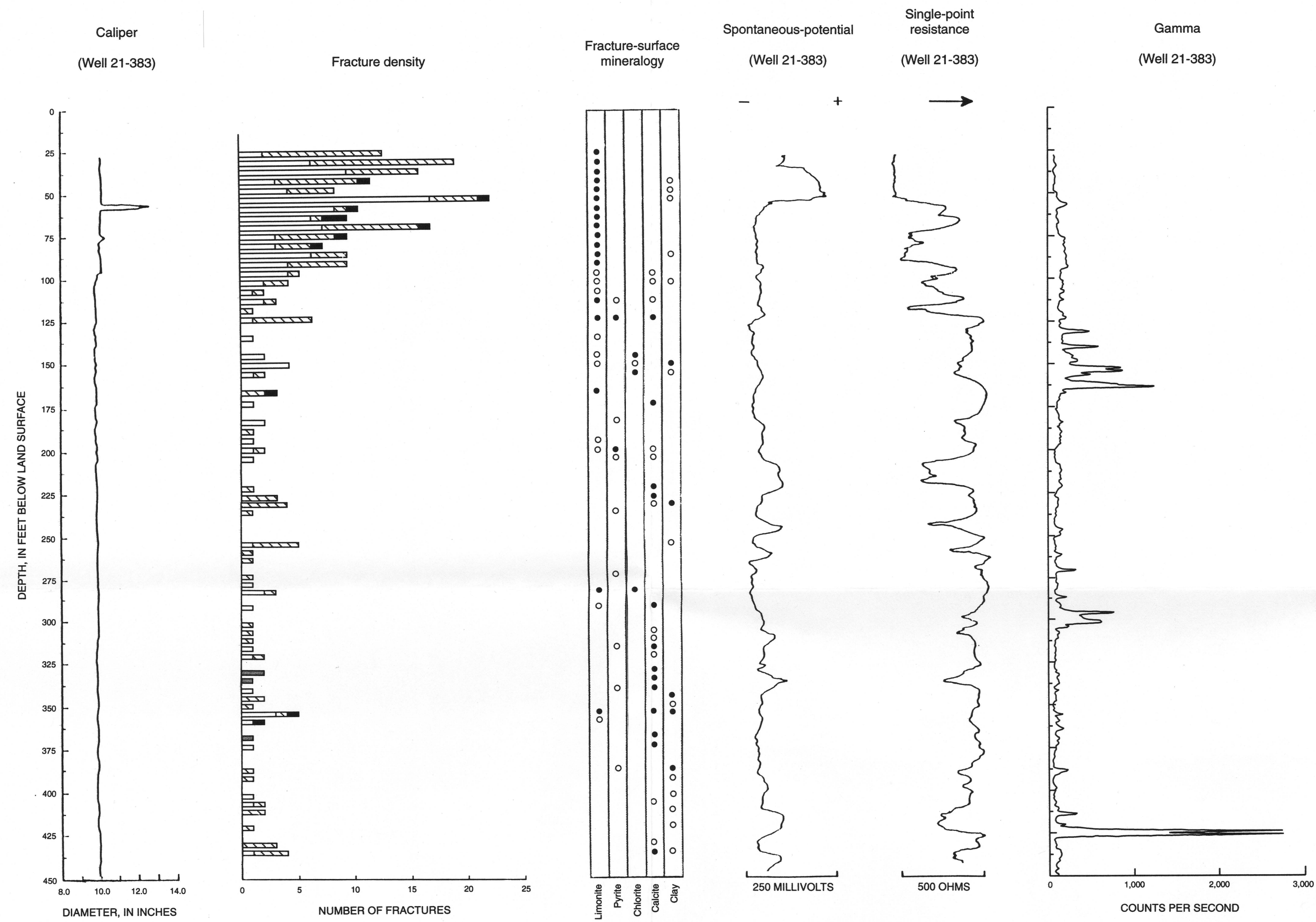
SITE 1, BOREHOLE 23-932



SITE 2, WELL 21-358



SITE 2, BOREHOLE 21-359



- Fracture characteristics**
- Fissured zone
  - ▣ Low-angle sealed
  - ▤ High-angle sealed
  - ▥ Low-angle open
  - ▦ High-angle open
- Fracture-surface mineralogy**
- Major mineral
  - Trace mineral

**EXPLANATION**

- Heat-pulse-flowmeter log**
- Flow measured while well was being pumped
  - Flow measured while well was not being pumped
  - ⬆ Flow is upward
  - ⬆ Flow is downward
- (Well 21-289) Well in which log was completed, if log could not be obtained from adjacent well or borehole
- Site locations shown in figure 1; well and borehole locations shown in figure 2

CALIPER LOG, FRACTURE-DENSITY HISTOGRAM, FRACTURE-SURFACE MINERALOGY, BOREHOLE-TELEVIEWER LOG, HEAT-PULSE-FLOWMETER LOG, SPONTANEOUS-POTENTIAL LOG, SINGLE-POINT-RESISTANCE LOG, AND GAMMA LOG, SITES 1 AND 2, SOUTH-CENTRAL NEWARK BASIN, NEW JERSEY