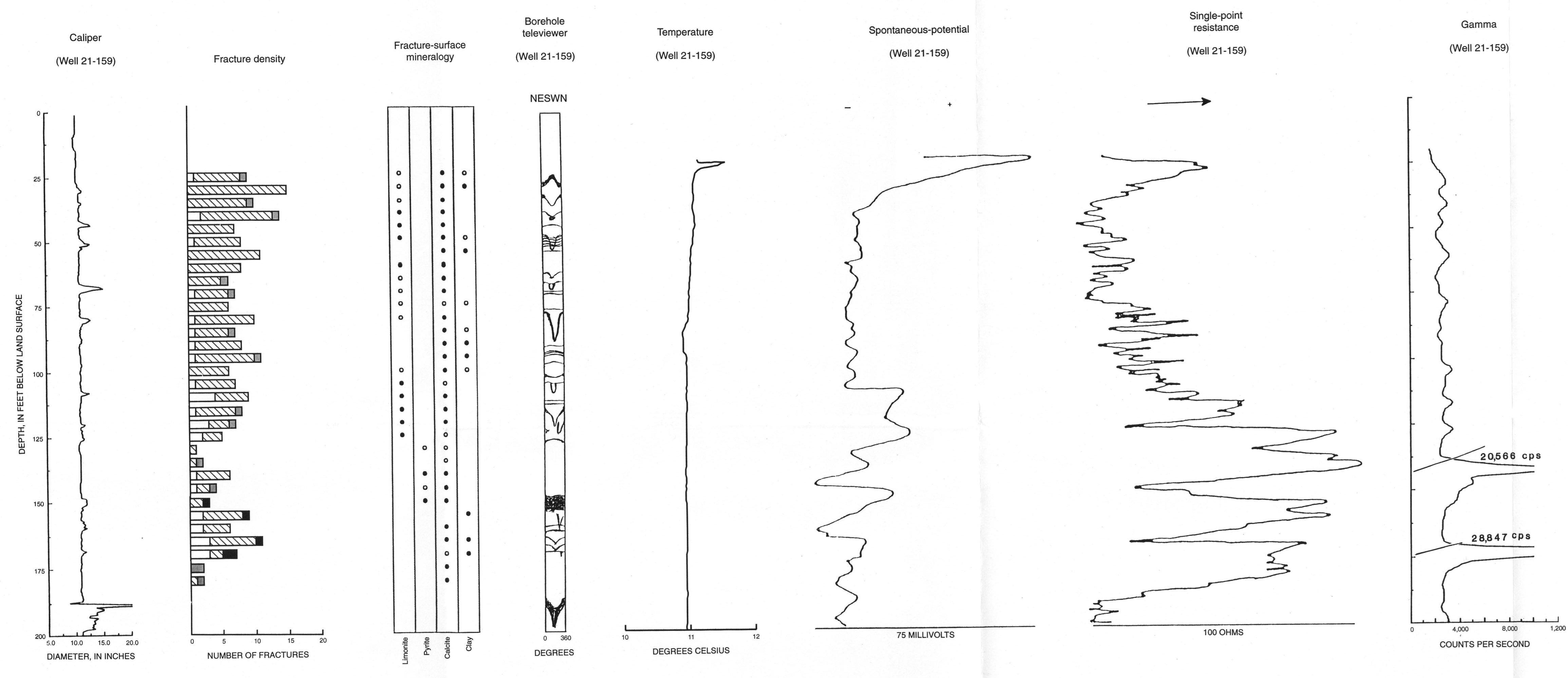


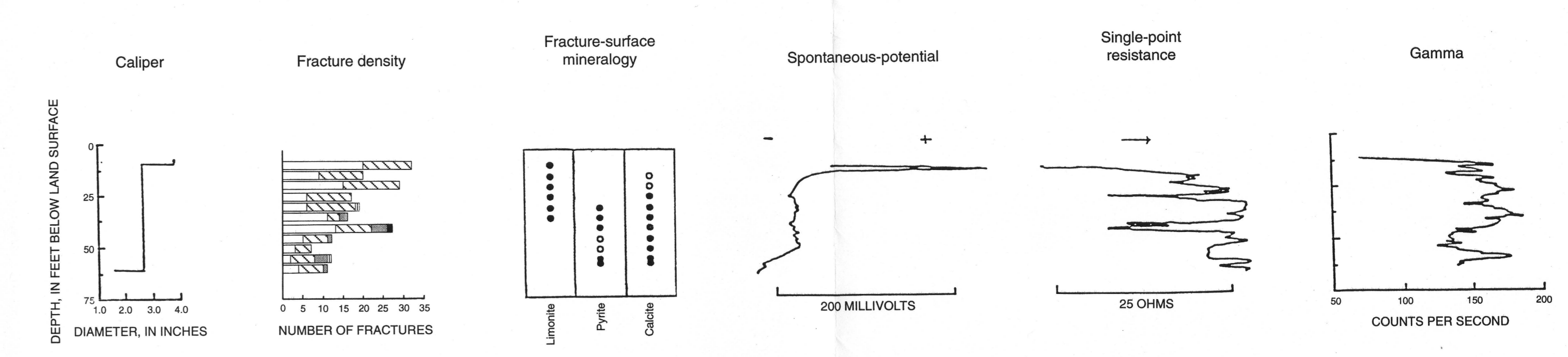
(200)  
wh  
95-4136

U.S. GEOLOGICAL SURVEY  
RESTON, VA  
SEP 09 1997  
SR  
LIBRARY

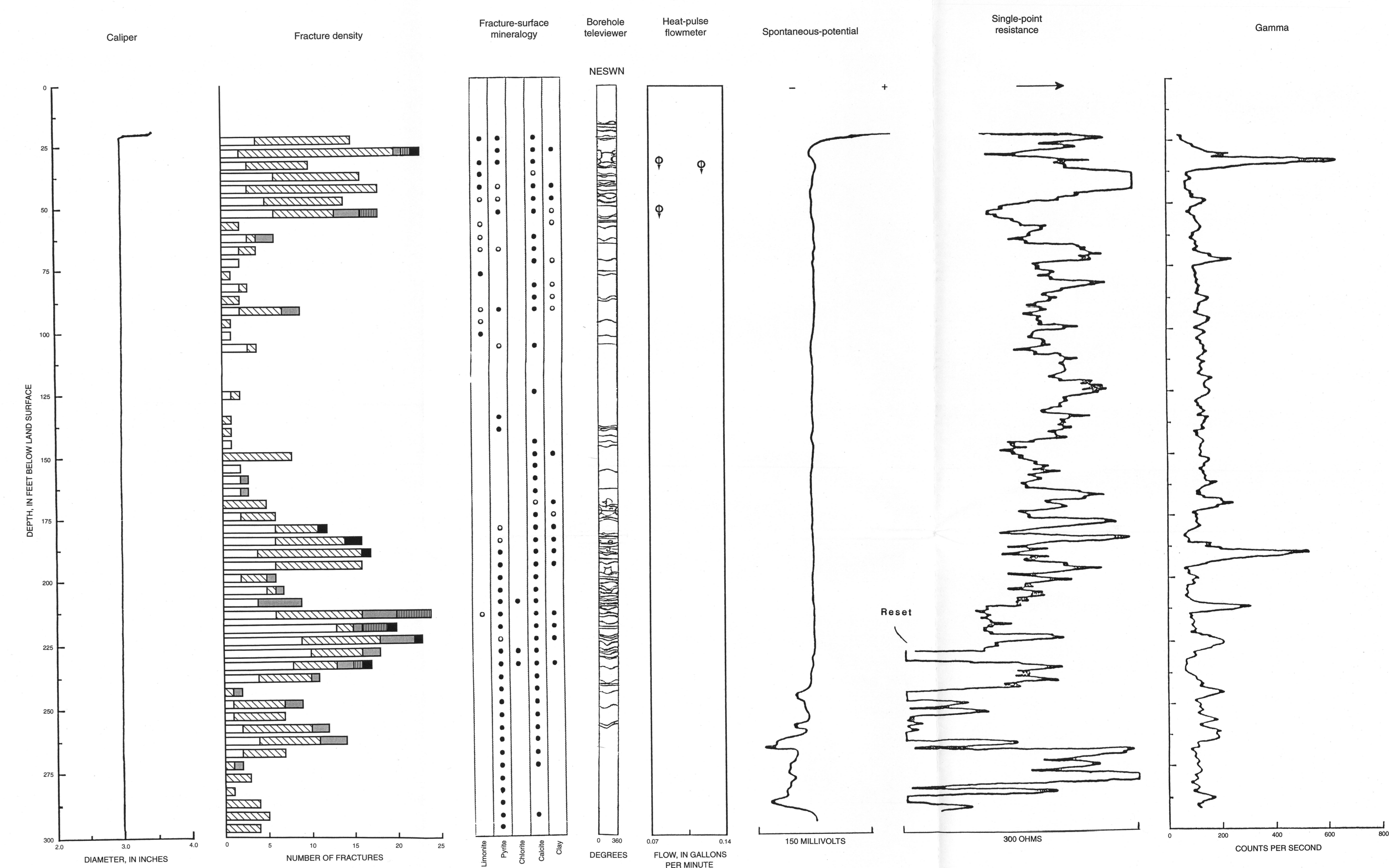
SITE 3, BOREHOLE 21-290



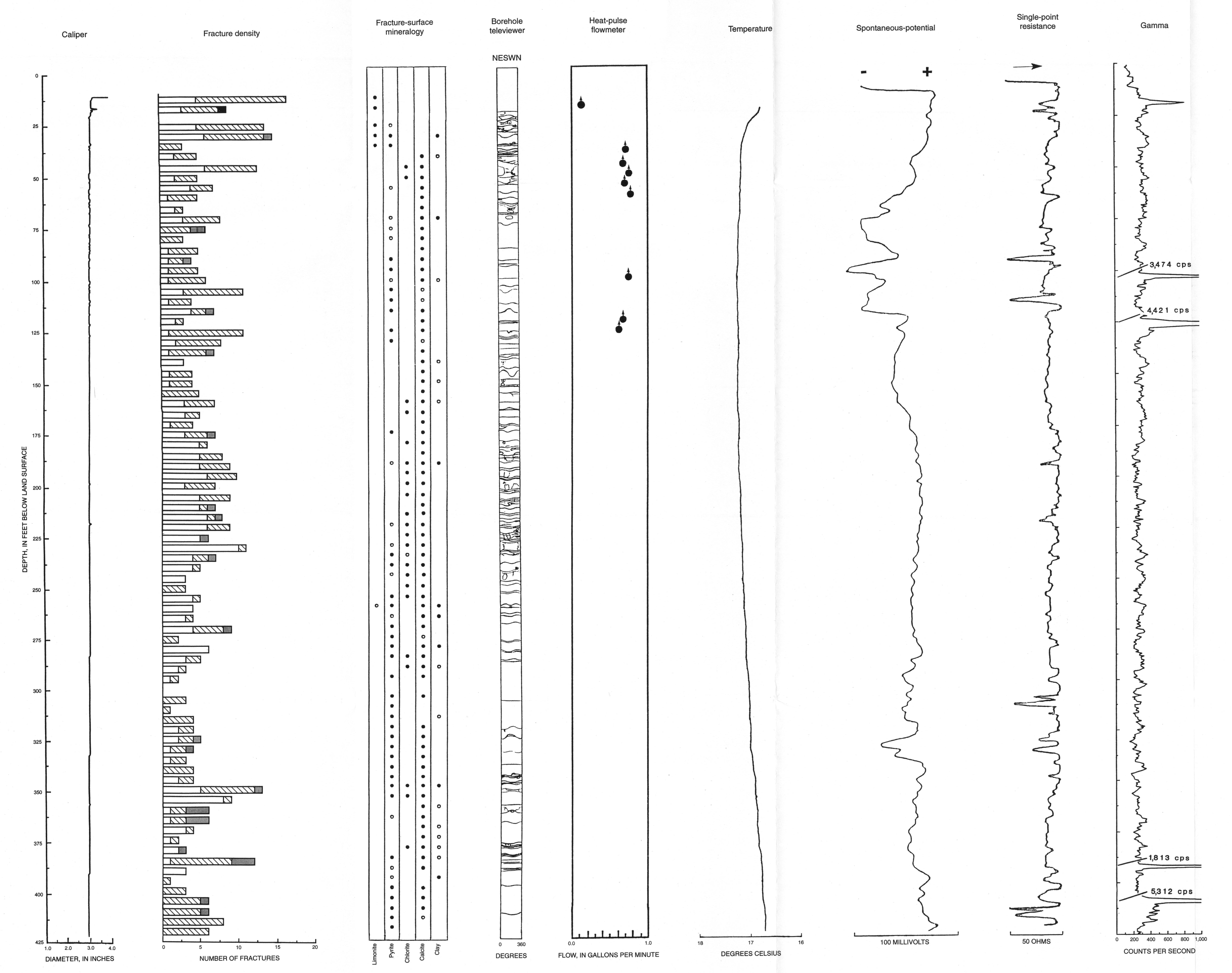
SITE 4, WELL 19-249



SITE 4, WELL 19-251



SITE 4, WELL 19-250



**EXPLANATION**

**Fracture characteristics**

- Fissured zone
- ▨ Low-angle sealed
- ▩ High-angle sealed
- ▧ Low-angle open
- ▦ High-angle open

**Fracture-surface mineralogy**

- Major mineral
- Trace mineral

**Heat-pulse-flowmeter log**

- Flow measured while well was being pumped
- Flow measured while well was not being pumped
- ▲ Flow is upward
- ▼ Flow is downward

(Well 21-289) Well in which log was completed, if log could not be obtained from adjacent well or borehole

Site locations shown in figure 1; well and borehole locations shown in figure 2

CALIPER LOG, FRACTURE-DENSITY HISTOGRAM, FRACTURE-SURFACE MINERALOGY, BOREHOLE-TELEVIEWER LOG, HEAT-PULSE-FLOWMETER LOG, TEMPERATURE LOG, SPONTANEOUS-POTENTIAL LOG, SINGLE-POINT-RESISTANCE LOG, AND GAMMA LOG, SITES 3 AND 4, SOUTH-CENTRAL NEWARK BASIN, NEW JERSEY