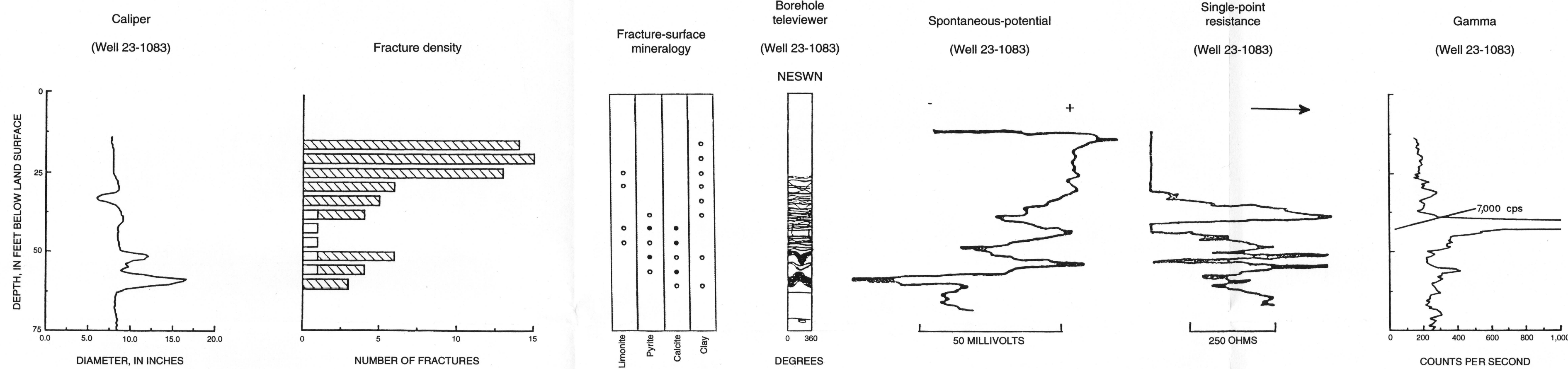


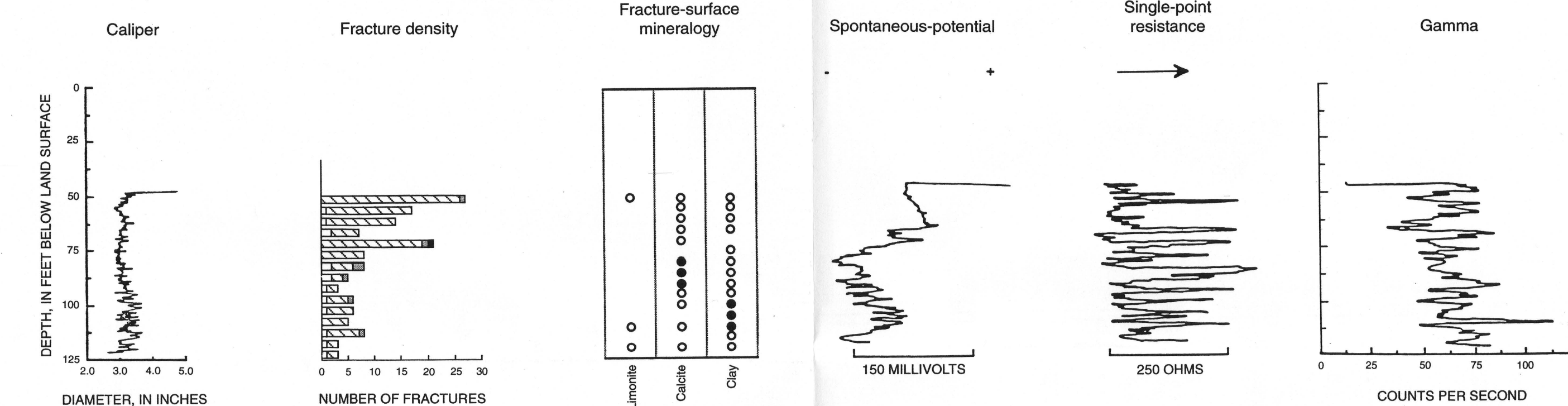
(200)  
WRI  
no. 95-4136

U.S. GEOLOGICAL SURVEY  
RESTON, VA.  
SEP 09 1997  
SR  
LIBRARY

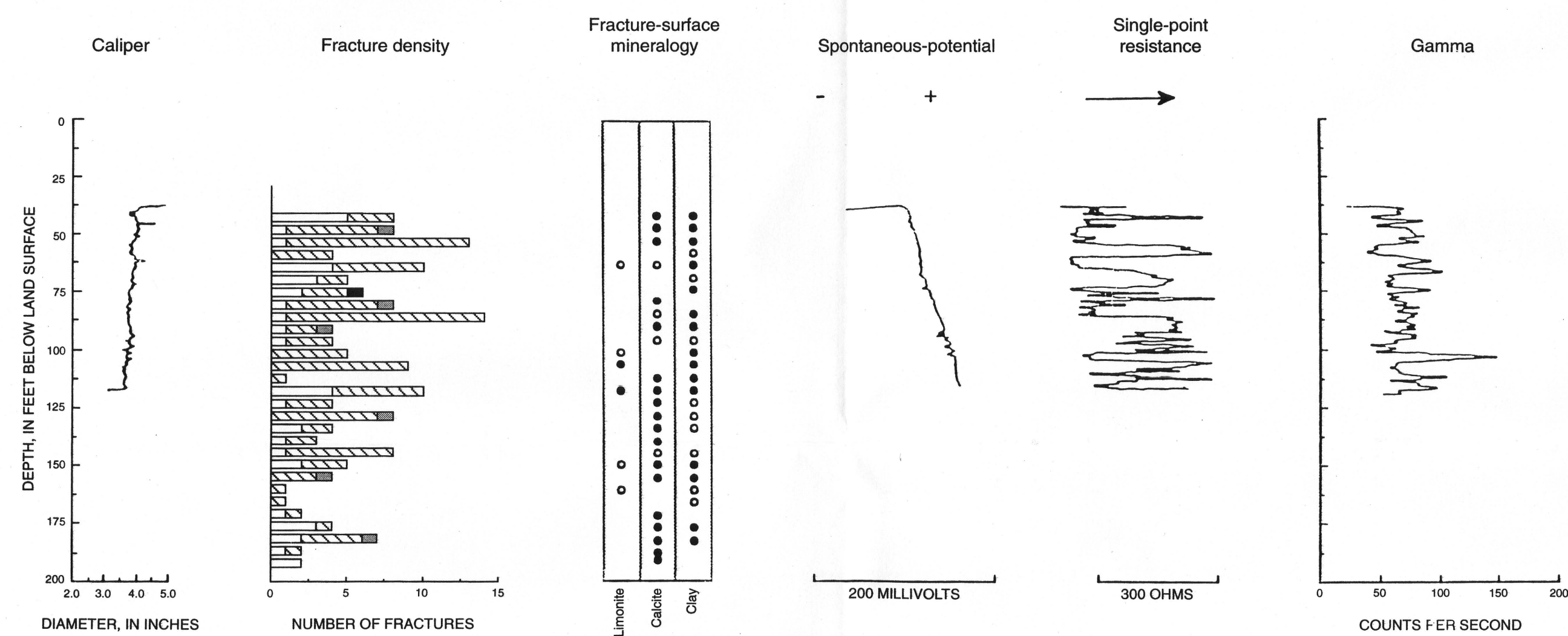
SITE 5, BOREHOLE 23-1076



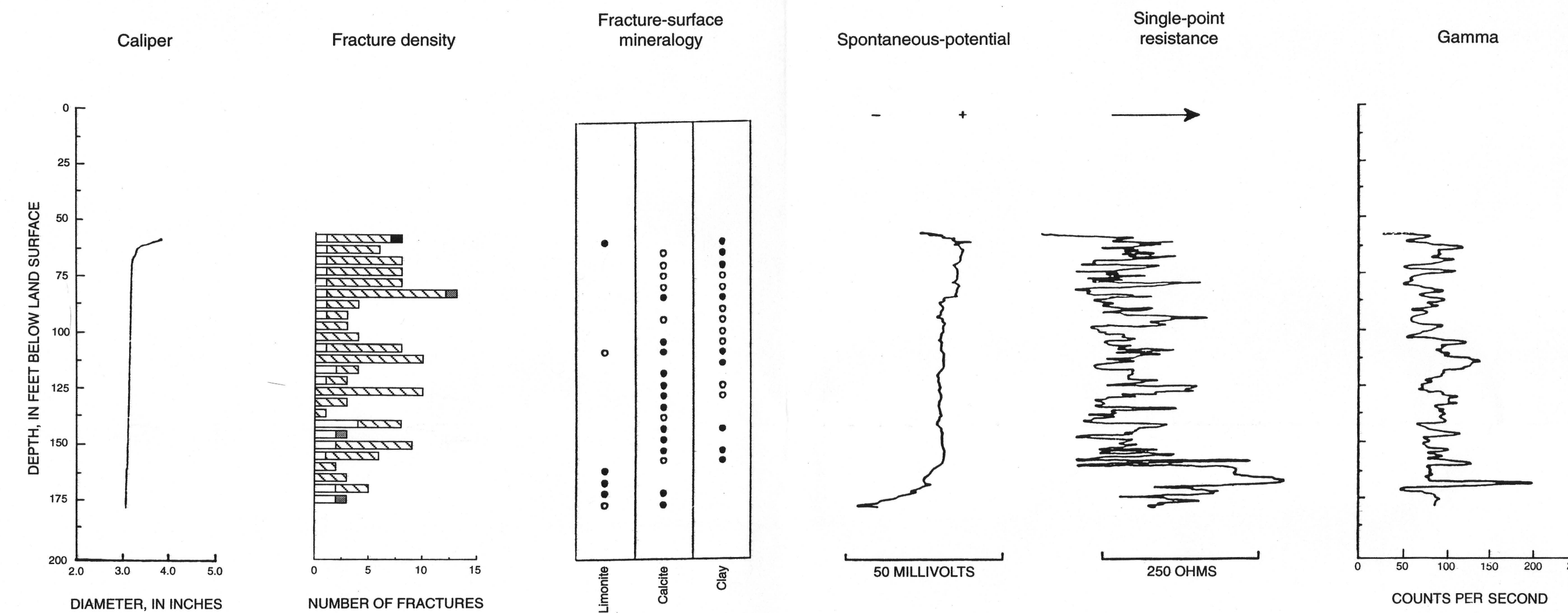
SITE 6, WELL 3-286



SITE 6, WELL 3-287



SITE 6, WELL 3-288



EXPLANATION

Fracture characteristics

- Fissured zone
- ▨ Low-angle sealed
- ▩ High-angle sealed
- ▧ Low-angle open
- High-angle open

Fracture-surface mineralogy

- Major mineral
- Trace mineral

(Well 23-1083) Well in which log was completed, if log could not be obtained from adjacent well or borehole

Site locations shown in figure 1; well and borehole locations shown in figure 2

CALIPER LOG, FRACTURE-DENSITY HISTOGRAM, FRACTURE-SURFACE MINERALOGY, BOREHOLE-TELEVIEWER LOG, SPONTANEOUS-POTENTIAL LOG, SINGLE-POINT-RESISTANCE LOG, AND GAMMA LOG, SITES 5 AND 6, SOUTH-CENTRAL AND NORTHEASTERN NEWARK BASIN, NEW JERSEY