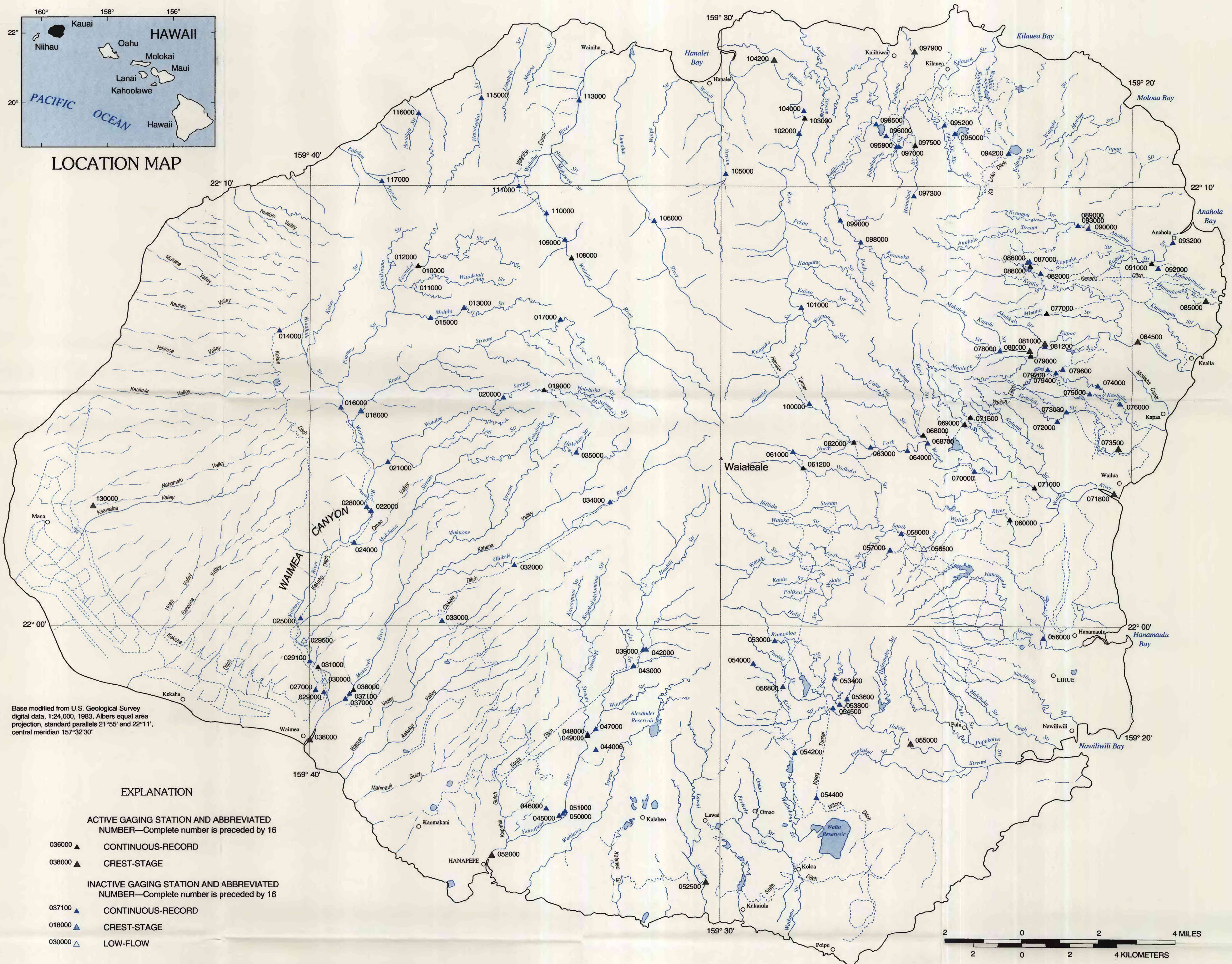


LOCATION MAP



Base modified from U.S. Geological Survey digital data, 1:24,000, 1983, Albers equal area projection, standard parallels 21°55' and 22°11', central meridian 157°32'30"

EXPLANATION

ACTIVE GAGING STATION AND ABBREVIATED NUMBER—Complete number is preceded by 26

- 036000 ▲ CONTINUOUS-RECORD
- 038000 ▲ CREST-STAGE

INACTIVE GAGING STATION AND ABBREVIATED NUMBER—Complete number is preceded by 16

- 037100 ▲ CONTINUOUS-RECORD
- 018000 ▲ CREST-STAGE
- 030000 ▲ LOW-FLOW

MAP SHOWING SURFACE-WATER GAGING STATIONS, ISLAND OF KAUAI, HAWAII, 1994.