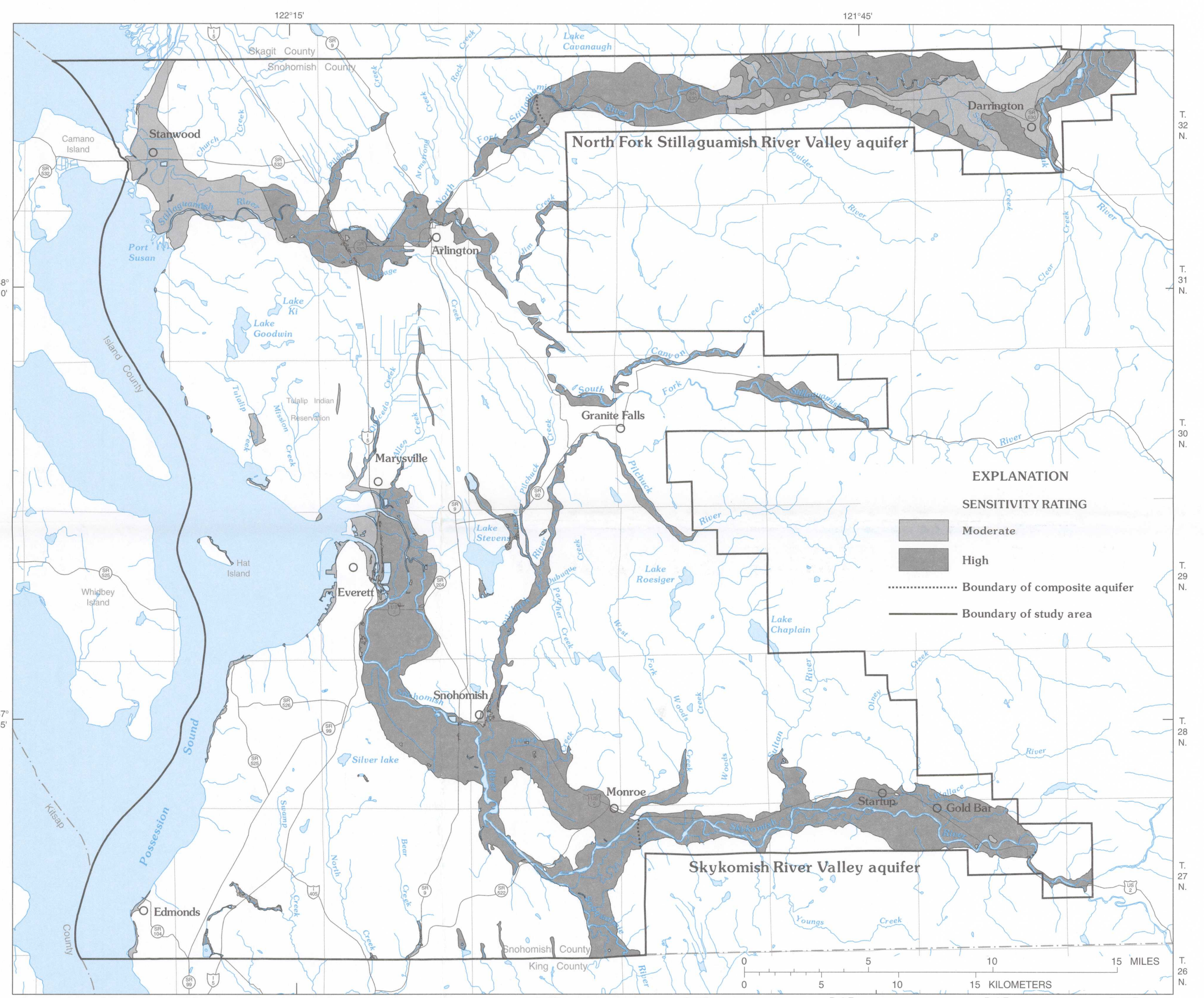
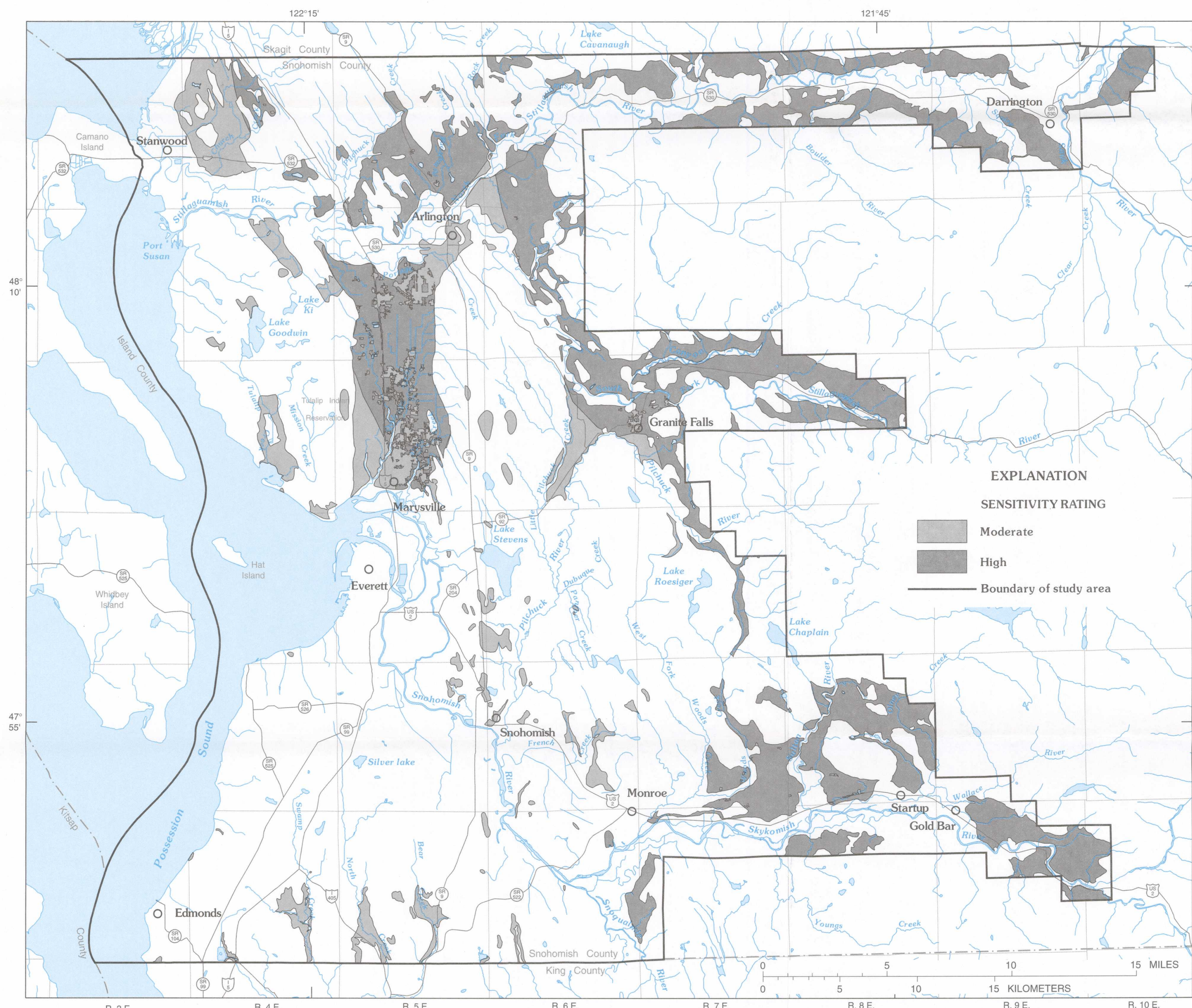


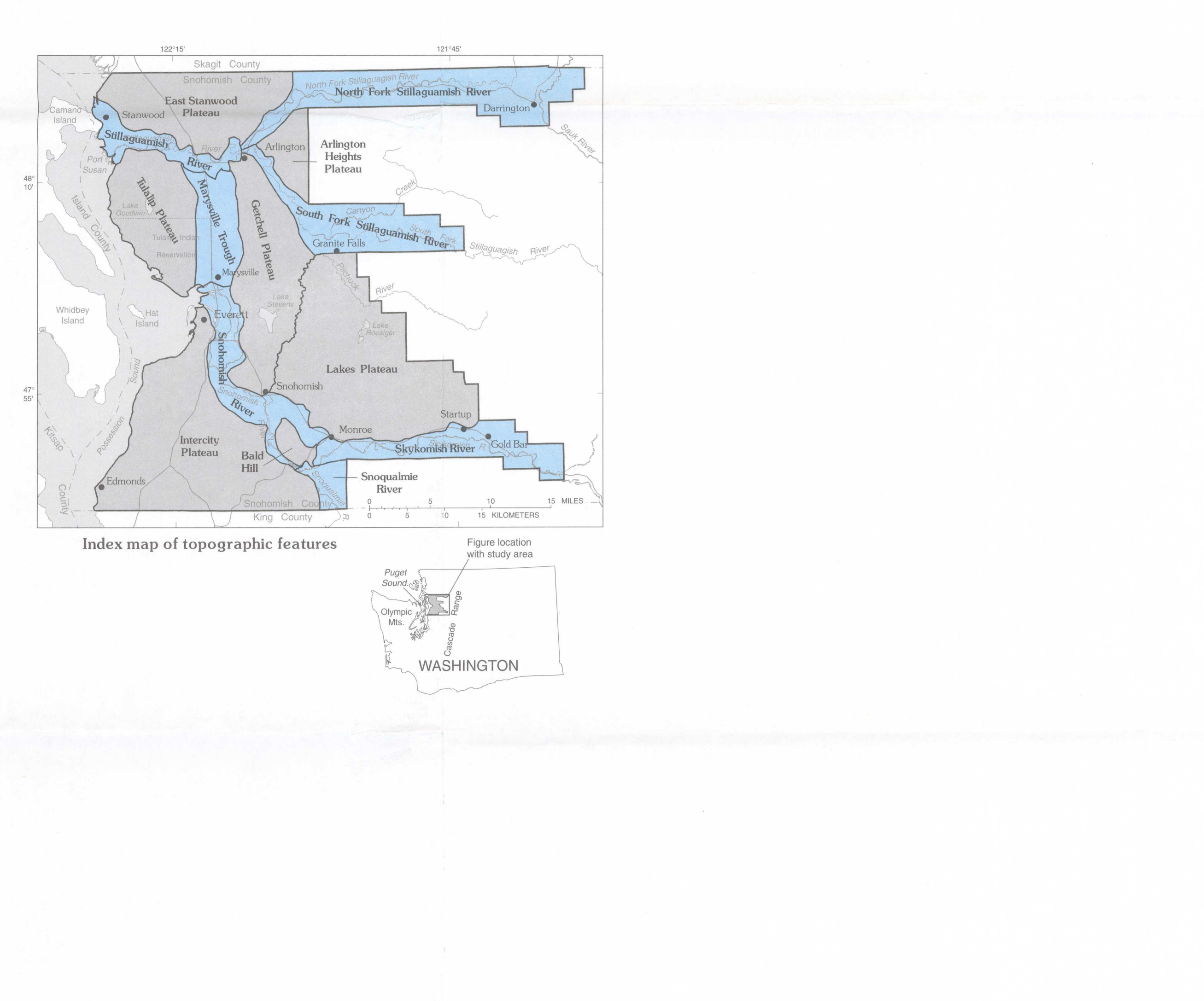
a. Relative sensitivity to contamination for water table of outcrop areas of geohydrologic units



b. Relative sensitivity to contamination for alluvium (Qal) aquifer, North Fork Stillaguamish River Valley aquifer, and Skykomish River Valley aquifer



c. Relative sensitivity to contamination for Vashon recessional outwash (Qvr) aquifer



Index map of topographic features

Figure location with study area

PLATE 7. RELATIVE SENSITIVITY OF GROUND-WATER SYSTEM TO CONTAMINATION, WESTERN SNOHOMISH COUNTY, WASHINGTON

By
B.E. Thomas, J.M. Wilkinson, and S.S. Embrey
1997