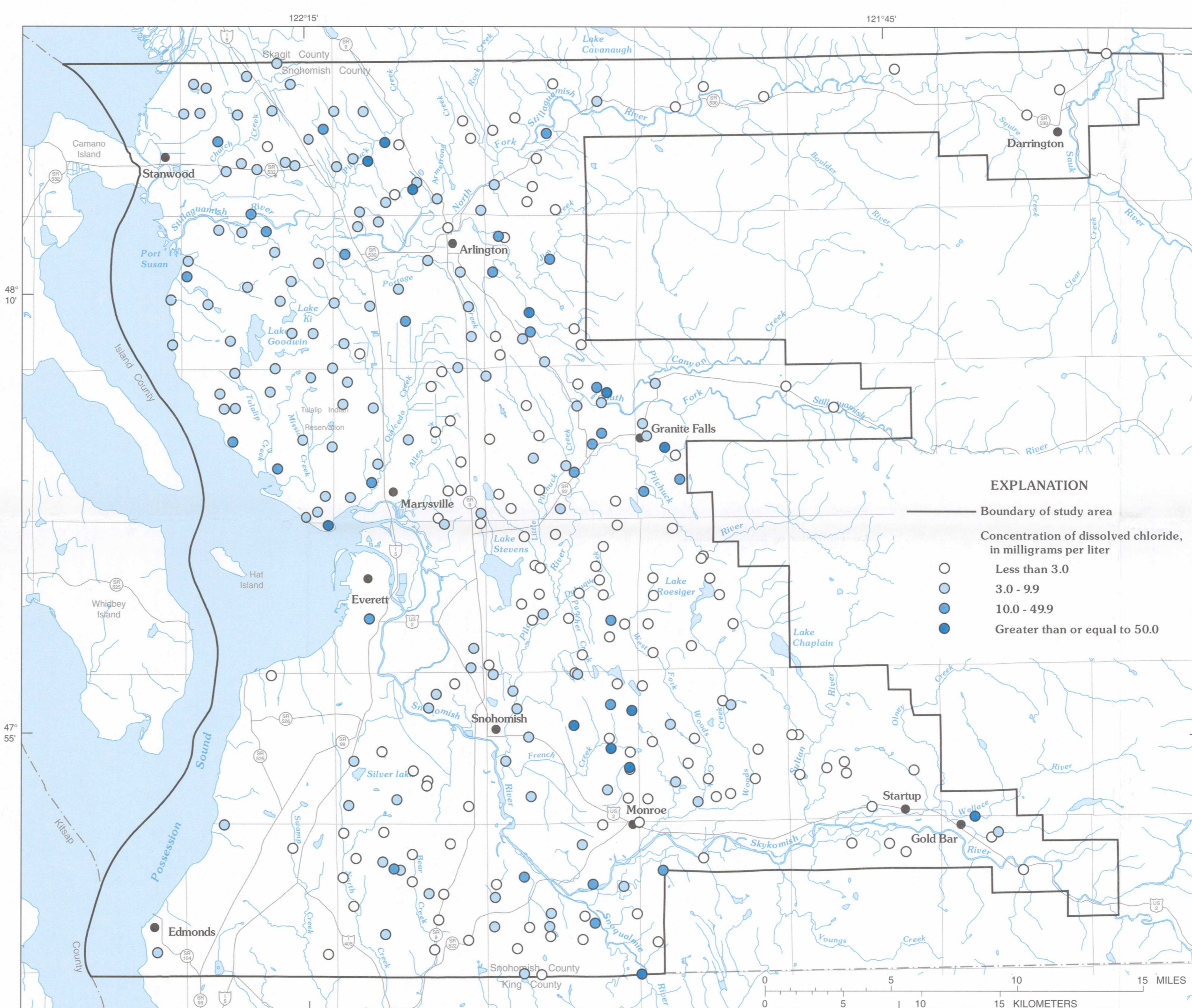
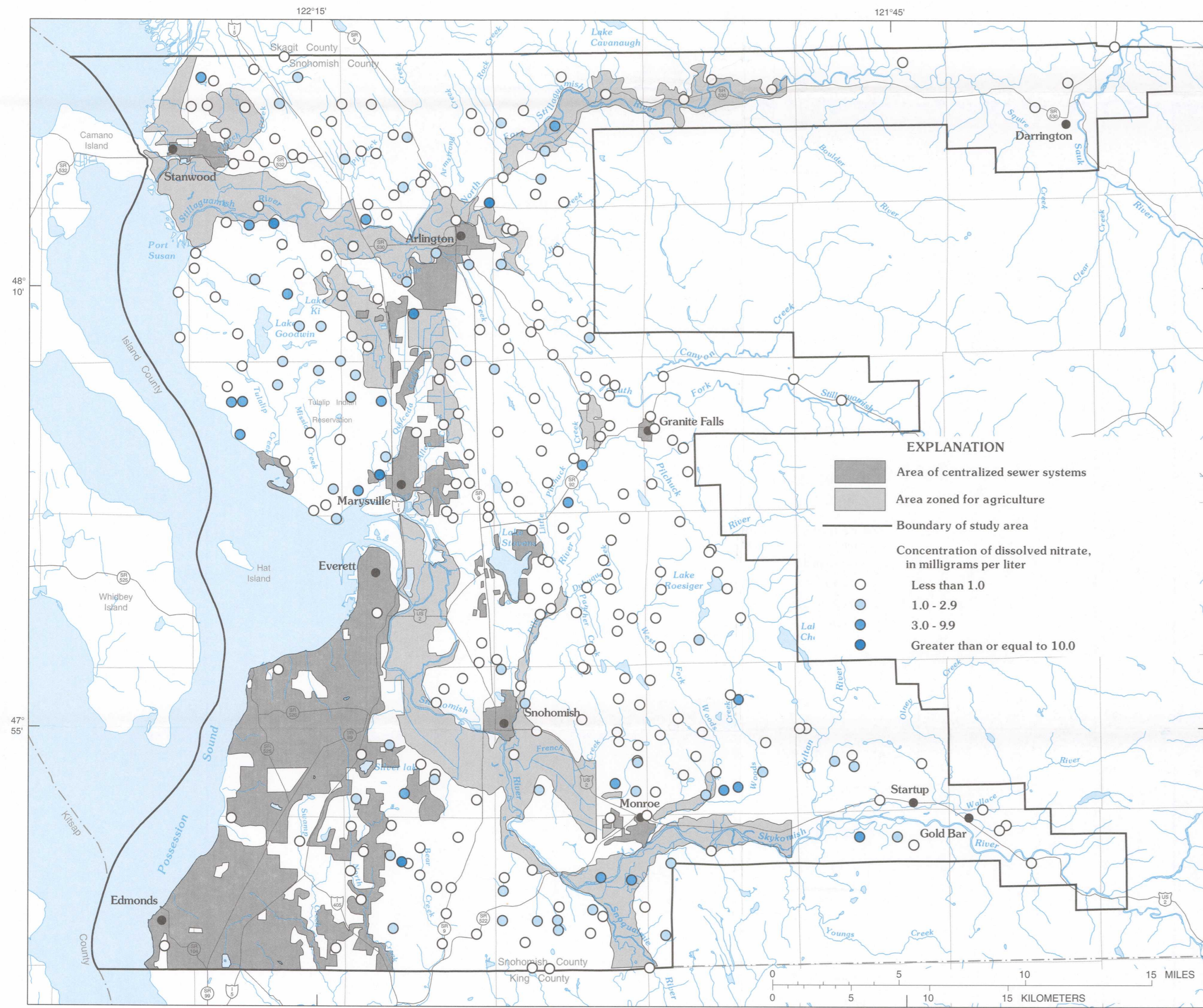


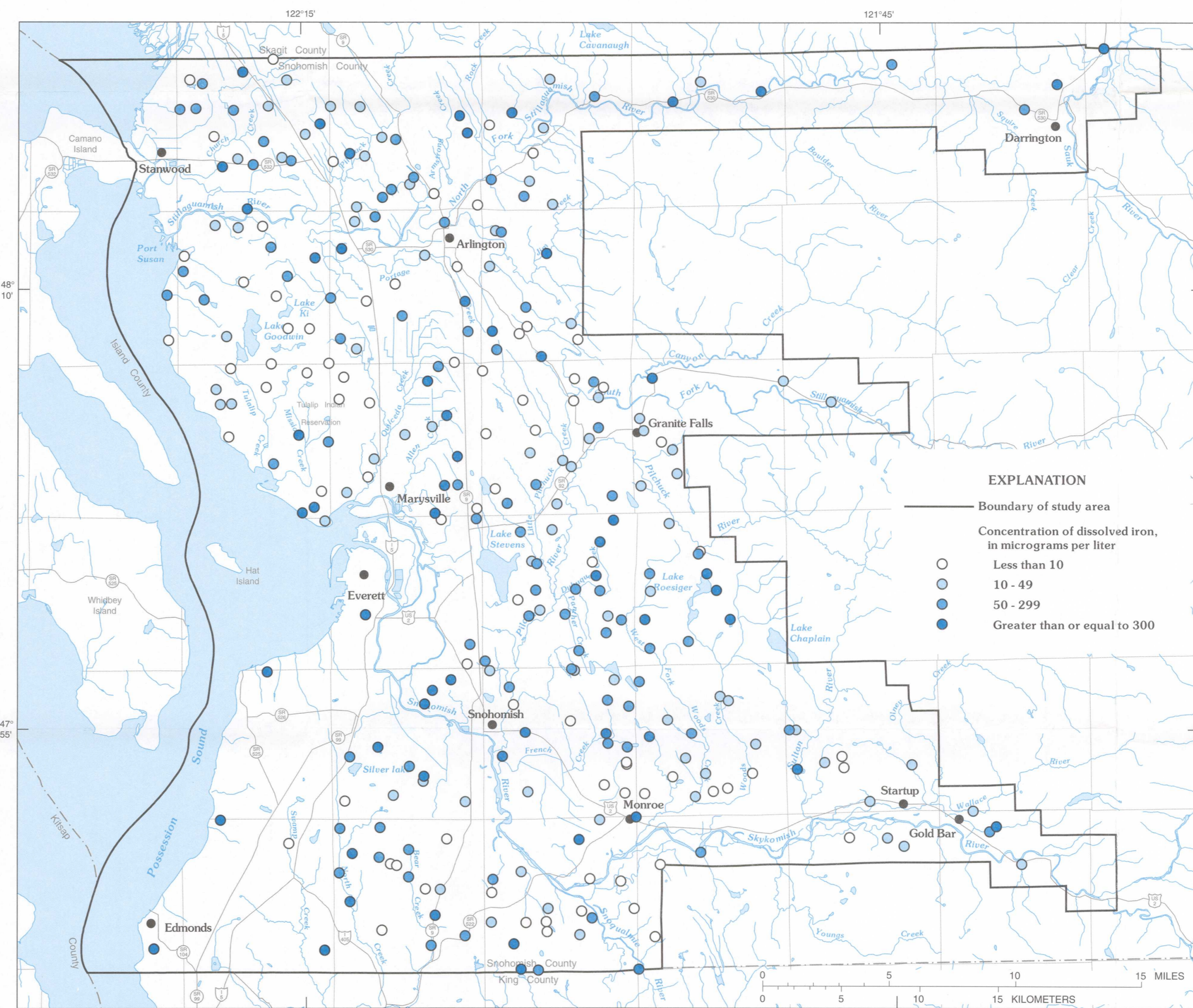
a. Concentrations of dissolved solids in ground water, 1993



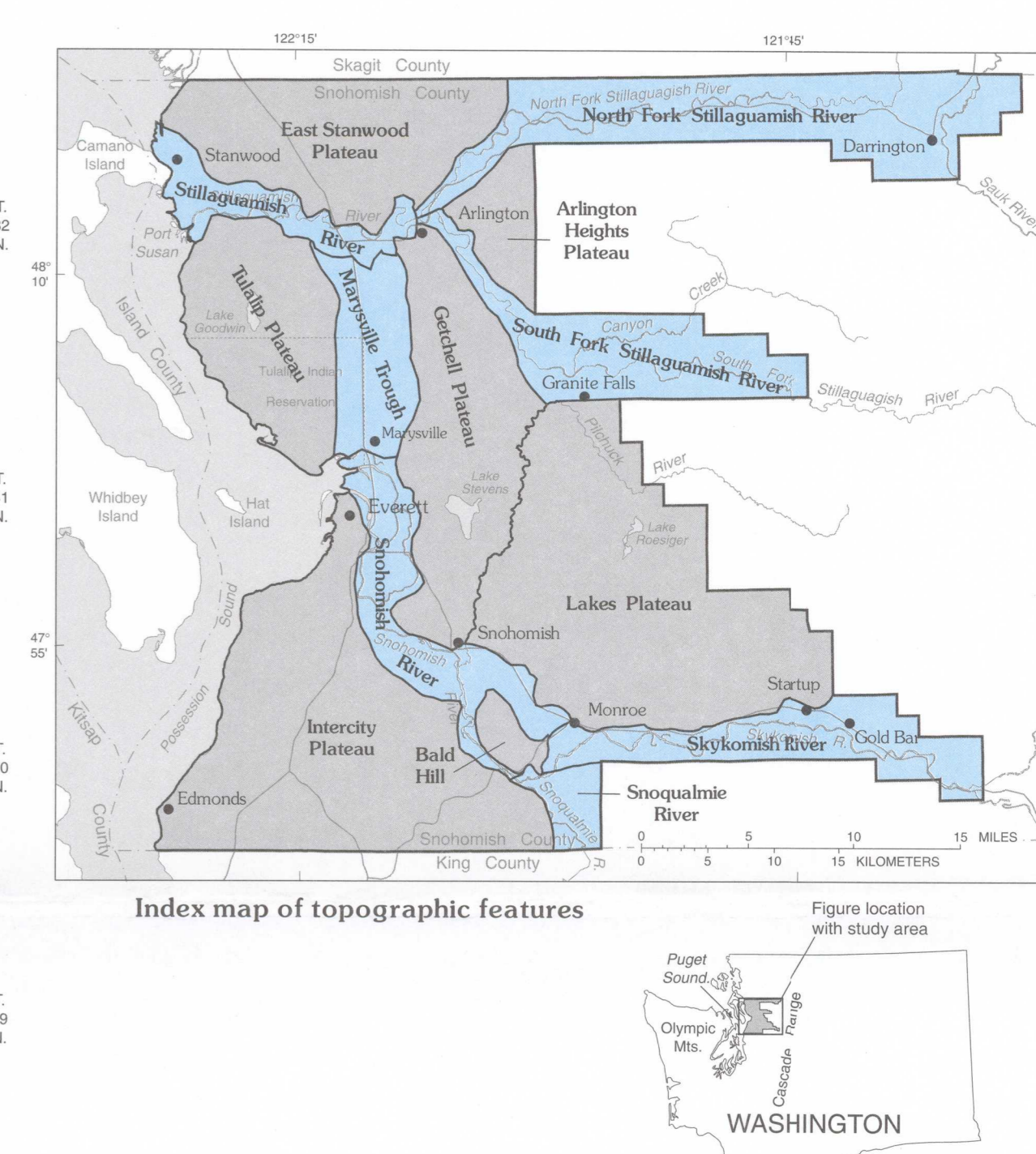
b. Concentrations of dissolved chloride in ground water, 1993



c. Concentrations of dissolved nitrate in ground water, 1993



d. Concentrations of dissolved iron in ground water, 1993



Index map of topographic features

Figure location with study area

WASHINGTON

PLATE 8. CONCENTRATIONS OF SELECTED WATER-QUALITY CONSTITUENTS IN GROUND WATER, WESTERN SNOHOMISH COUNTY, WASHINGTON, 1993

By
B.E. Thomas, J.M. Wilkinson, and S.S. Embrey
1997