

Figure 2. Shaded map showing total thickness of the Galena-Platteville bedrock unit in the subcrop area of Illinois and Wisconsin.

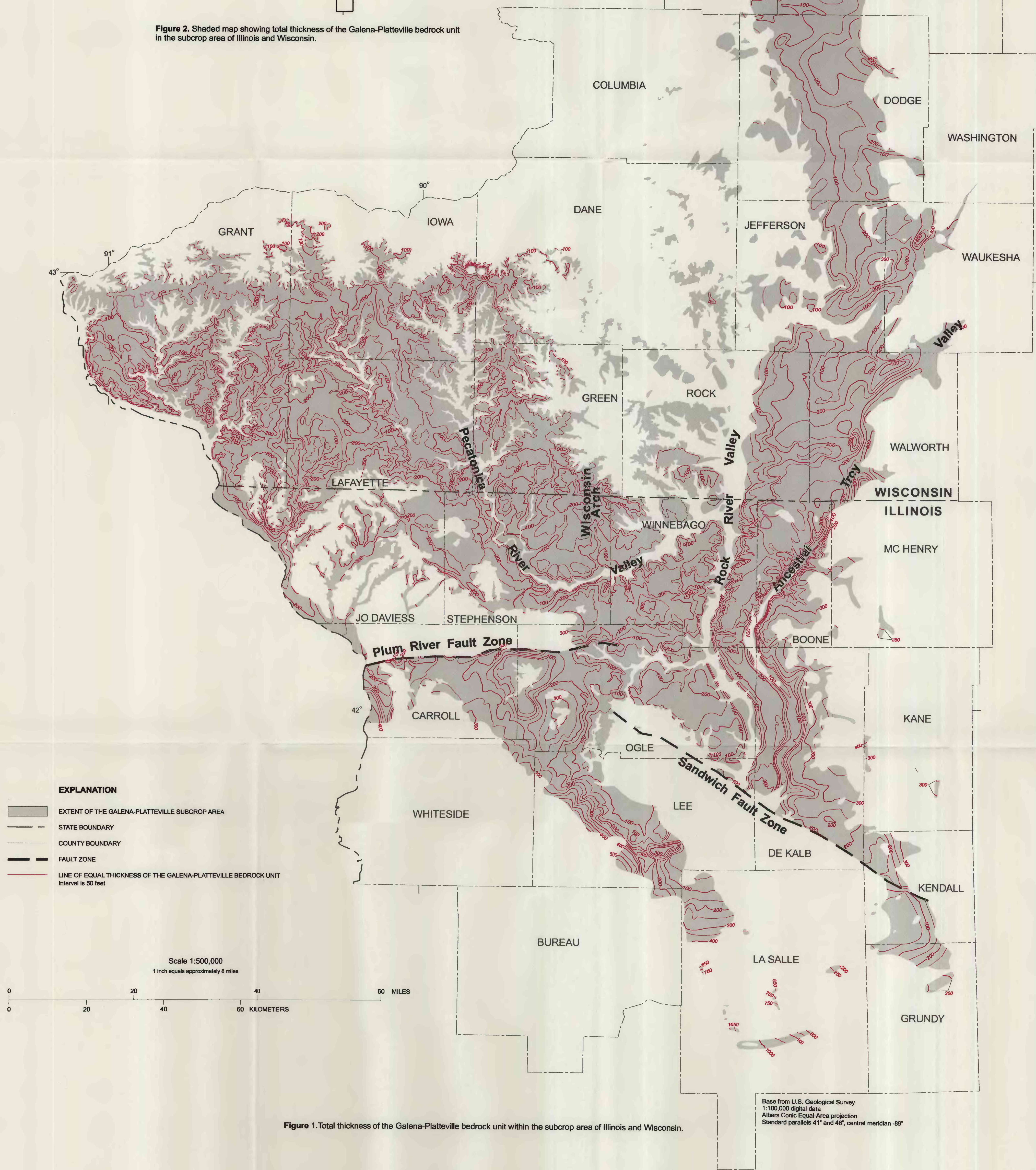


Figure 1. Total thickness of the Galena-Platteville bedrock unit within the subcrop area of Illinois and Wisconsin.

Base from U.S. Geological Survey
1:100,000 digital data
Albers Conic Equal-Area projection
Standard parallels 41° and 46°; central meridian -89°

ALTITUDE, DEPTH, AND THICKNESS OF THE GALENA-PLATTEVILLE BEDROCK UNIT
IN THE SUBCROP AREA OF ILLINOIS AND WISCONSIN

By
Timothy A. Brown, Charles P. Dunning, and Jennifer B. Sharpe
2000