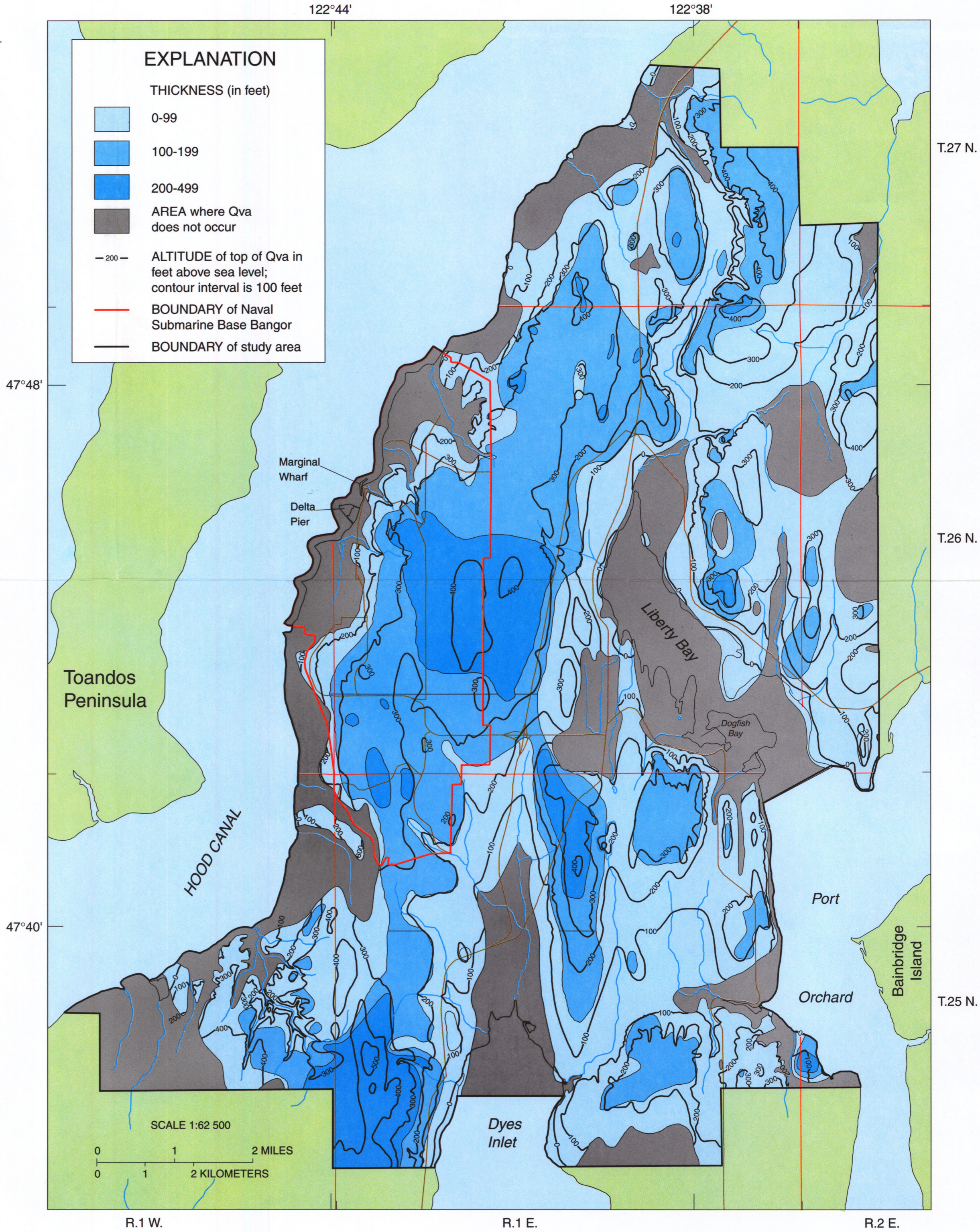
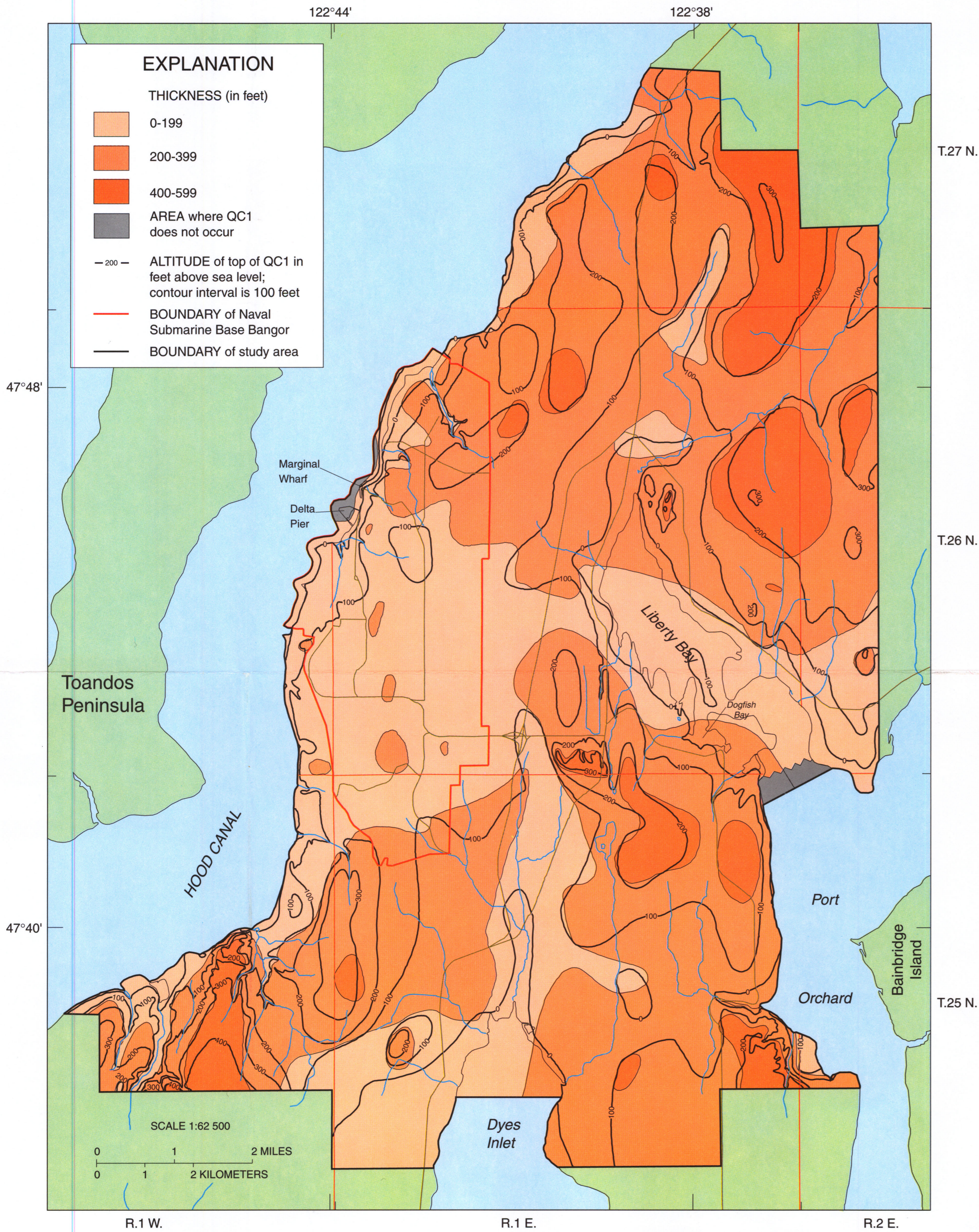


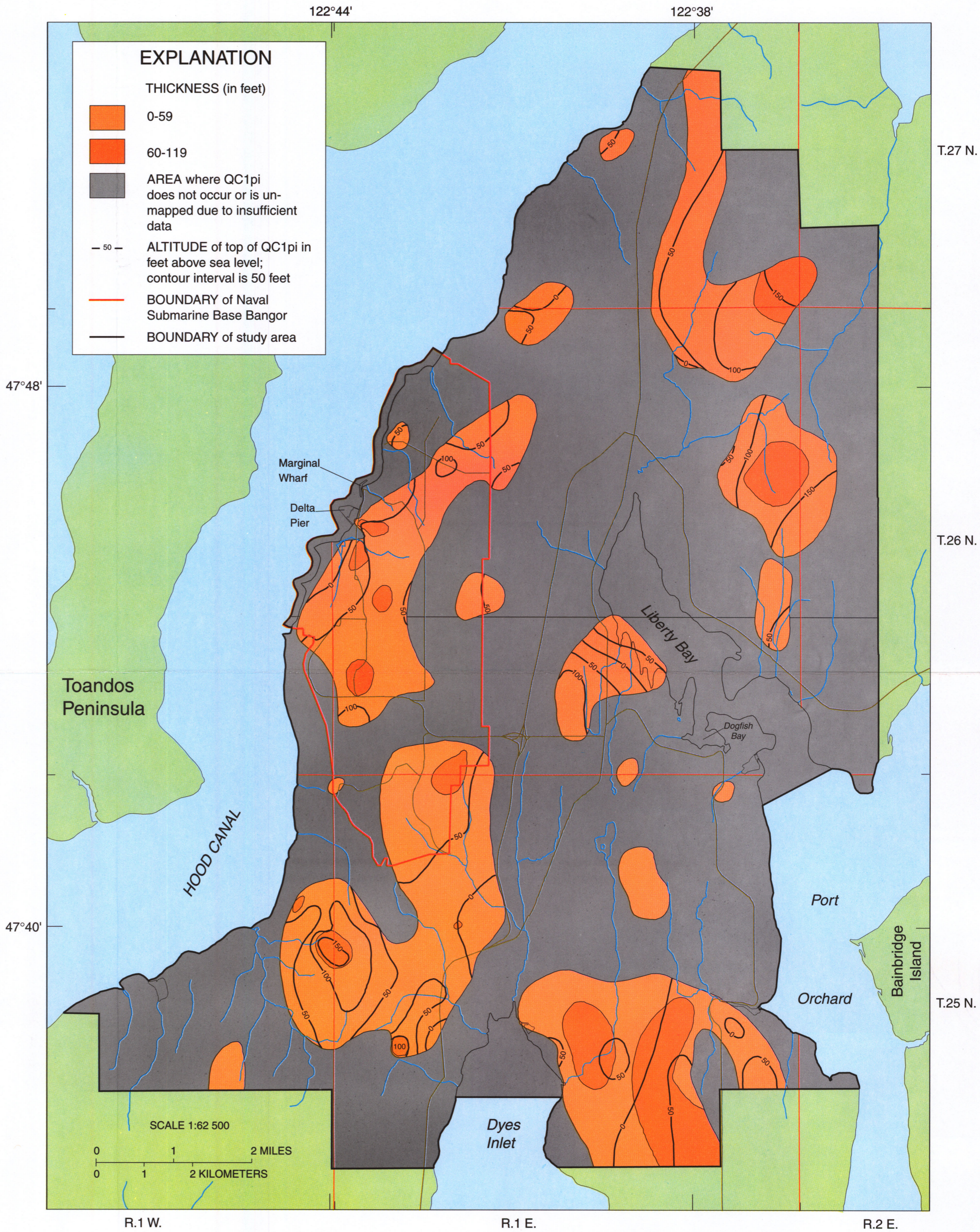
(a) Top, thickness, and extent of the Vashon till confining unit (Qvt)



(b) Top, thickness, and extent of the Vashon aquifer (Qva)



(c) Top, thickness, and extent of the Upper confining unit (QC1)



(d) Top, thickness, and extent of the Permeable interbeds (QC1pi)

MAPS SHOWING THE TOP ALTITUDE, THICKNESS, AND AREAL EXTENT OF SELECTED HYDROGEOLOGIC UNITS  
OF NAVAL SUBMARINE BASE BANGOR  
AND VICINITY, KITSAP COUNTY, WASHINGTON

By  
S.C. Kahle  
1998