

Figure 4. West-to-east hydrogeologic section (A-A') through the Sparta aquifer in northern Louisiana.

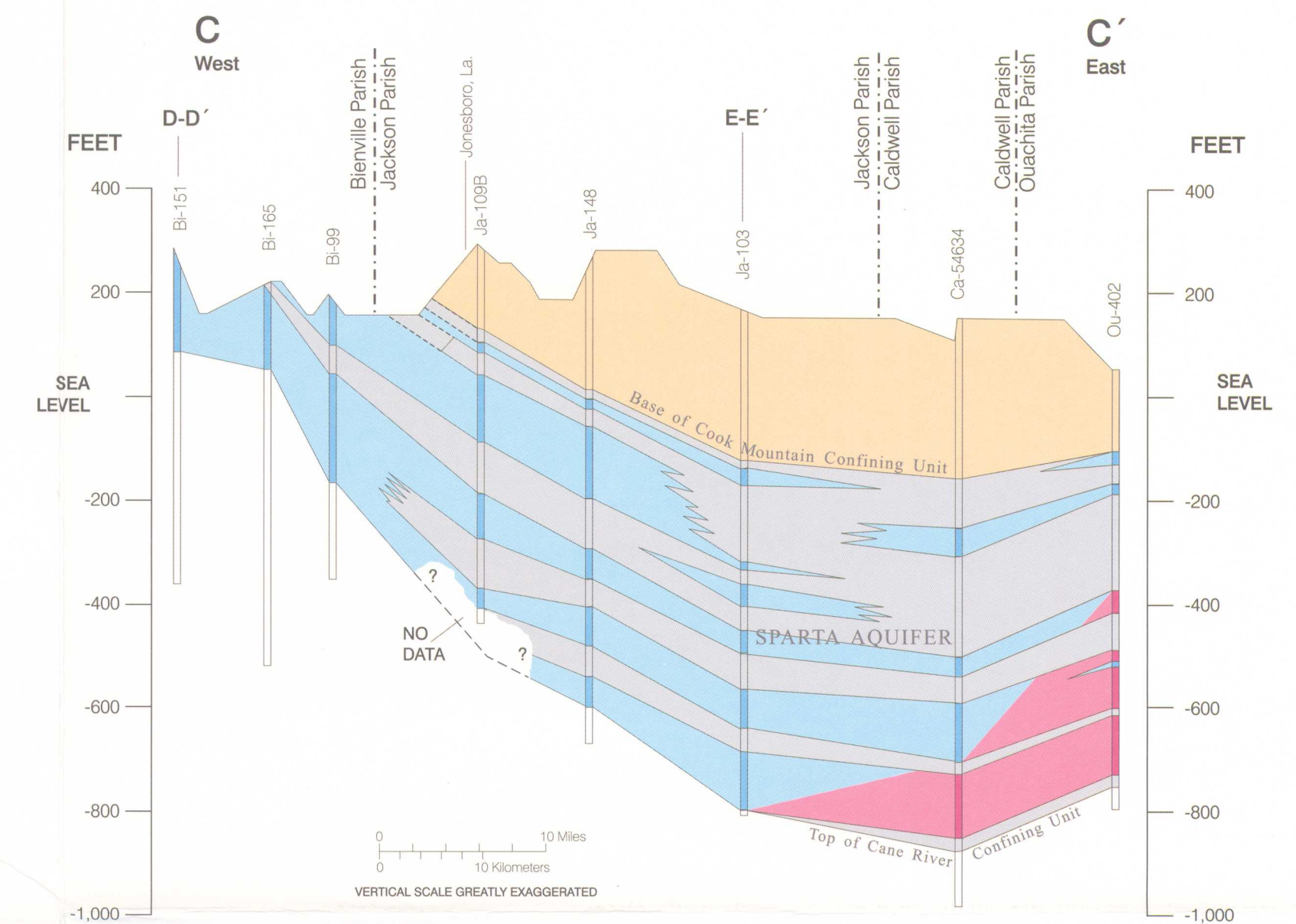


Figure 6. West-to-east hydrogeologic section (C-C') through the Sparta aquifer in northern Louisiana.

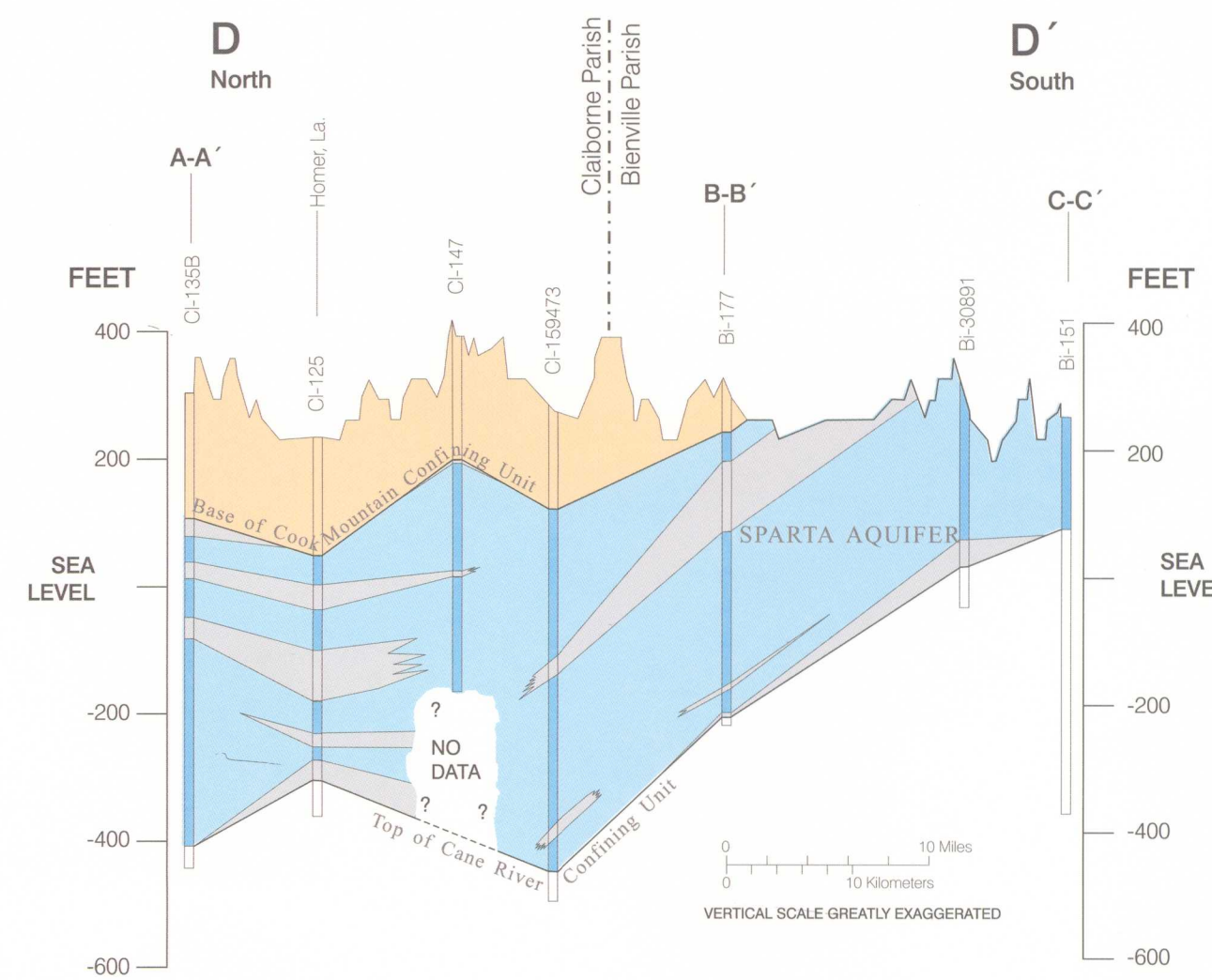


Figure 7. North-to-south hydrogeologic section (D-D') through the Sparta aquifer in northern Louisiana.

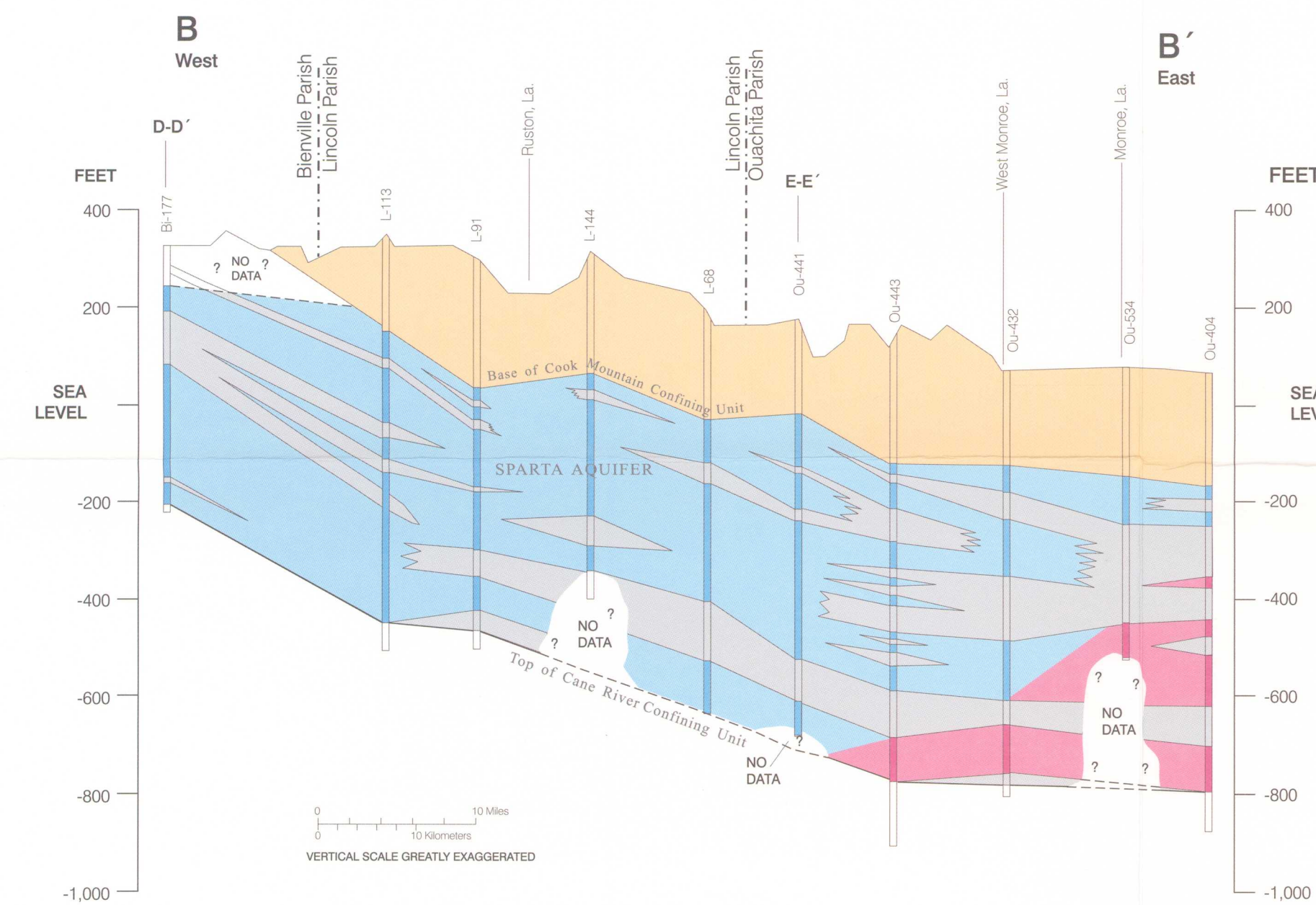
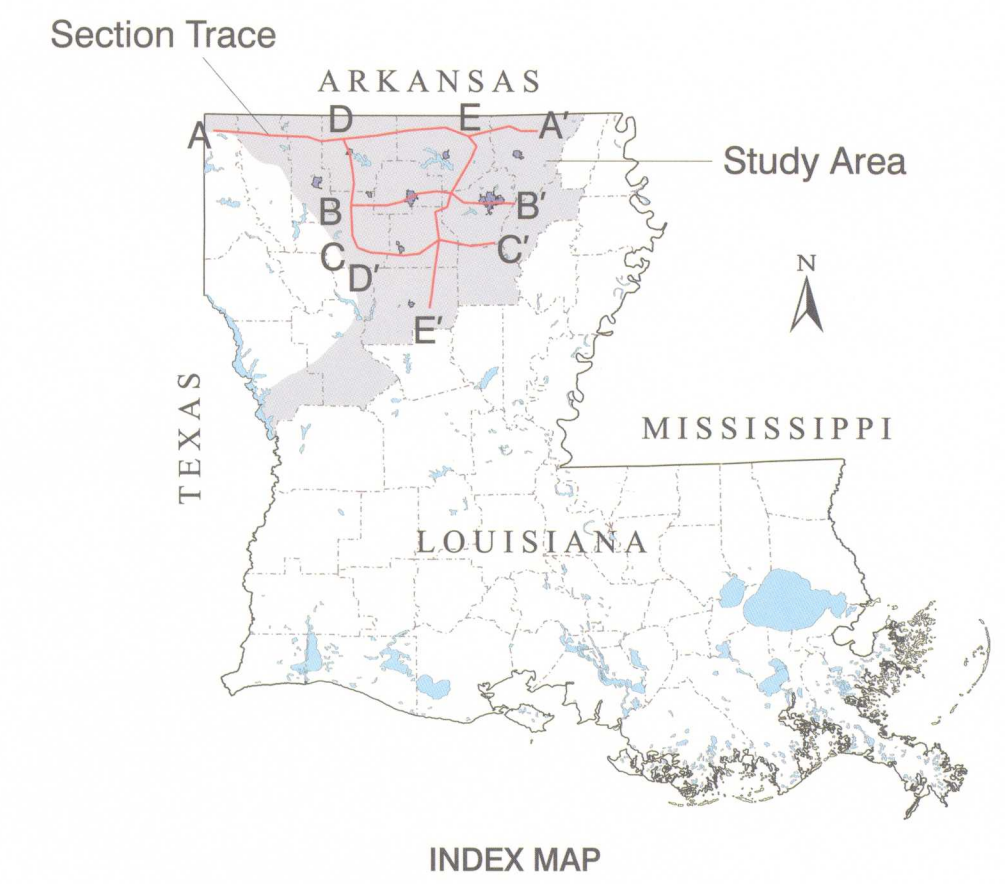


Figure 5. West-to-east hydrogeologic section (B-B') through the Sparta aquifer in northern Louisiana.

- EXPLANATION**
- Overlying hydrogeologic unit
  - Clay
  - Freshwater bearing sand
  - Saltwater bearing sand
  - Underlying hydrogeologic unit
  - Inferred contact

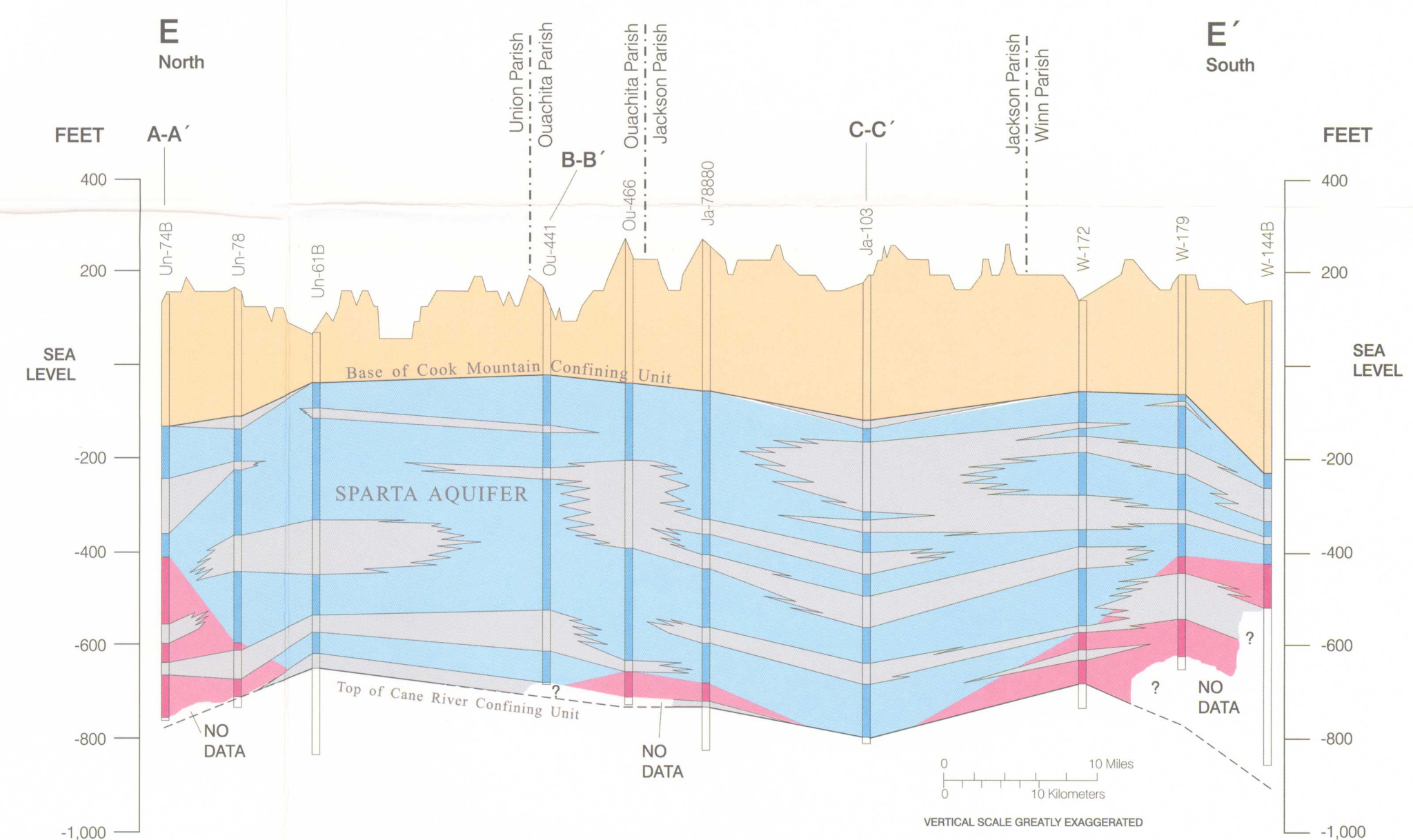


Figure 8. North-to-south hydrogeologic section (E-E') through the Sparta aquifer in northern Louisiana.

