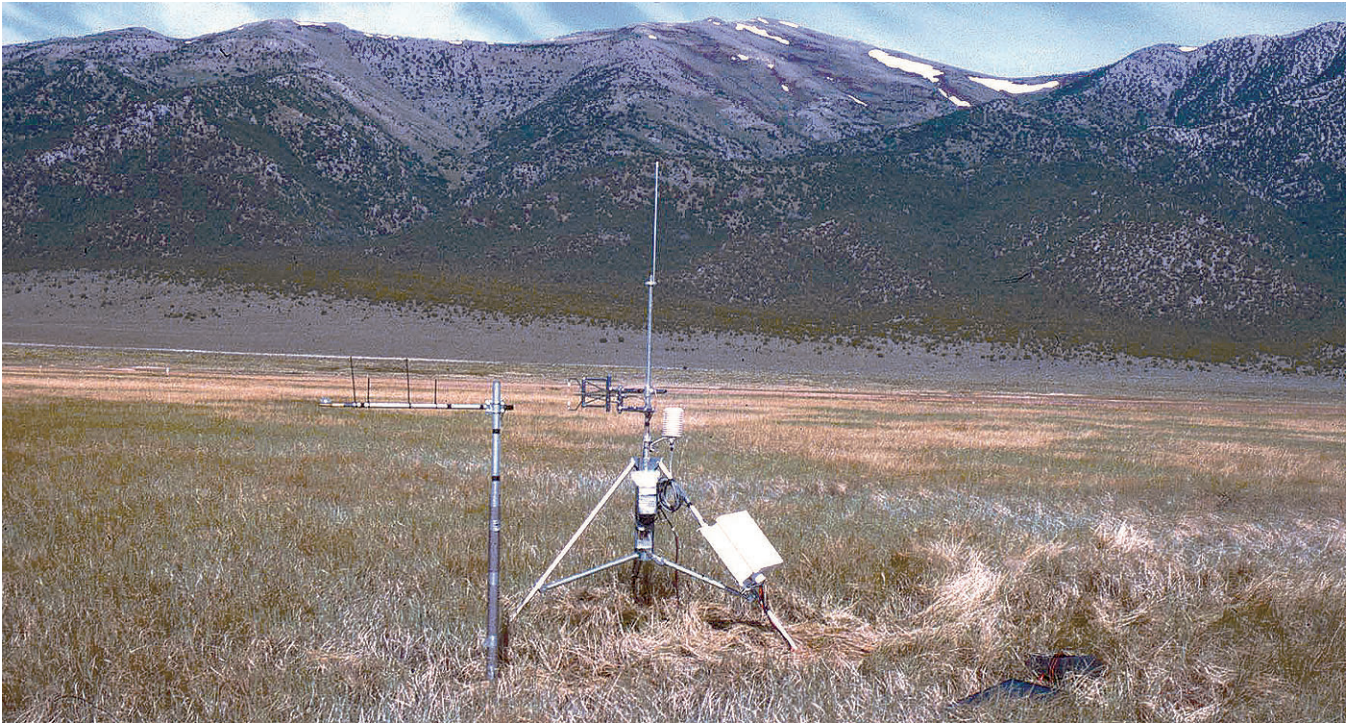
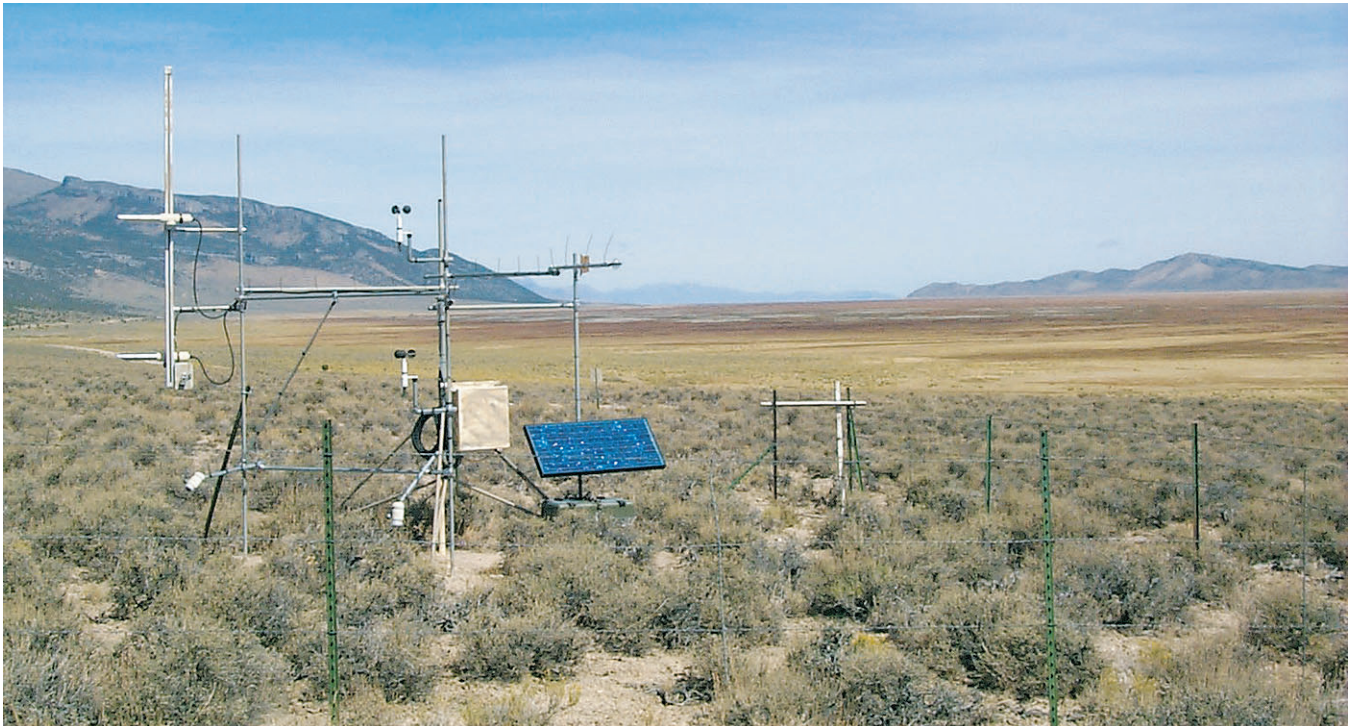


**A****B**

**Figure 6.** Typical meadow and desert-shrub upland habitats in Ruby Lake National Wildlife Refuge, northeastern Nevada: (A) Meadow site, established over dense cover of primarily sedges (*Carex* spp.), rushes (*Juncus* spp.), and some grasses; and (B) desert-shrub upland site, established over moderate cover of black sagebrush (*Artemisia nova*) and green rabbitbrush (*Chrysothamnus viscidiflorus*). Depth to water probably greater than 80 feet.