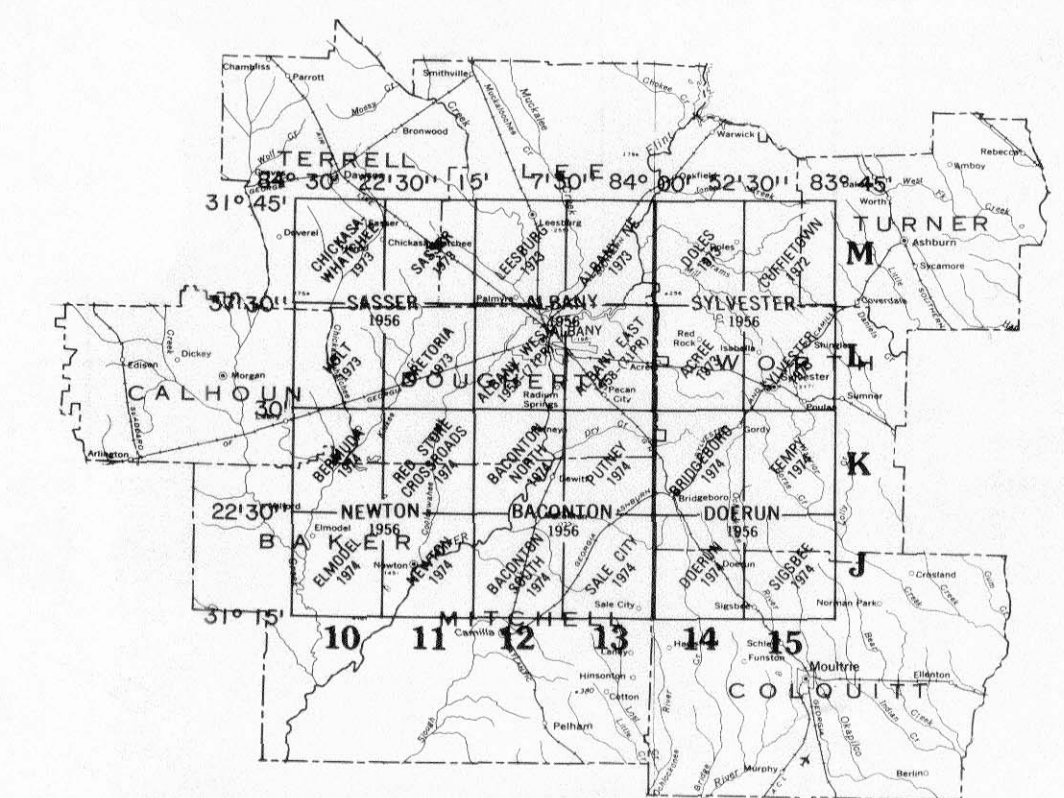
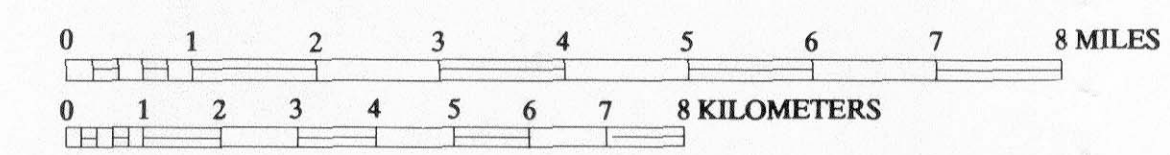


- EXPLANATION**
- 150— POTENTIOMETRIC CONTOUR—Shows altitude at which water level would have stood in tightly cased wells. Dashed where approximately located. Contour interval is 10 feet. Datum is NGVD of 1929
 - ← DIRECTION OF GROUND-WATER FLOW
 - 15M004 WELL AND IDENTIFICATION NUMBER
 - 15L020 OBSERVATION WELL EQUIPPED WITH RECORDER
 - ▲ A STREAMFLOW-MEASUREMENT SITE AND IDENTIFICATION LETTER



LETTER AND NUMBER DESIGNATIONS OF 7 1/2-MINUTE TOPOGRAPHIC MAPS FOR AREA OF REPORT

Base from U.S. Geological Survey
1:62,500 quadrangles



MAP SHOWING LOCATIONS OF WELLS, LETTER AND NUMBER DESIGNATIONS OF 7 1/2-MINUTE TOPOGRAPHIC MAPS, STREAMFLOW-MEASUREMENT SITES, AND POTENTIOMETRIC SURFACE OF THE UPPER FLORIDAN AQUIFER FOR NOVEMBER 1985, ALBANY AREA, GEORGIA