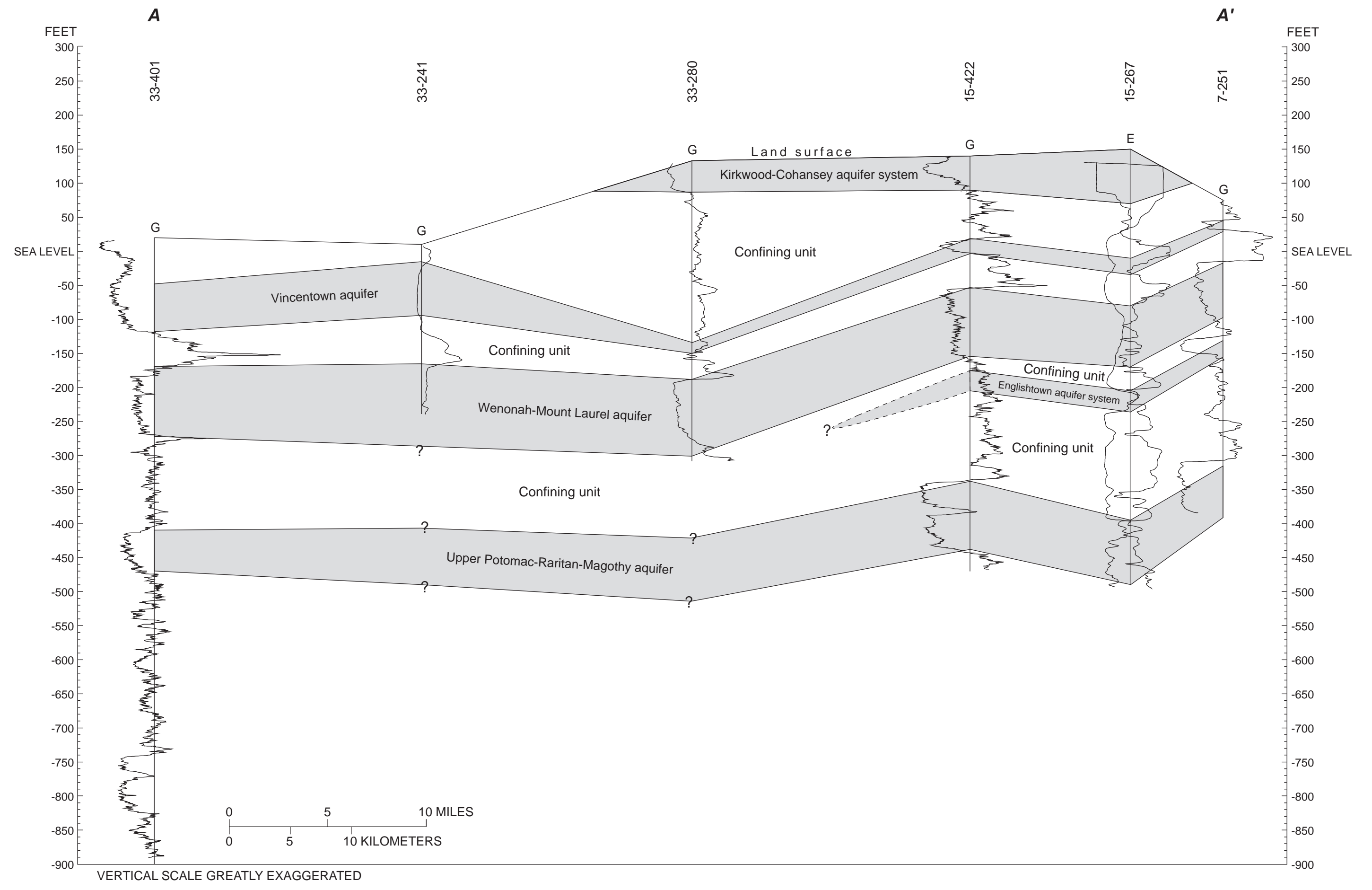


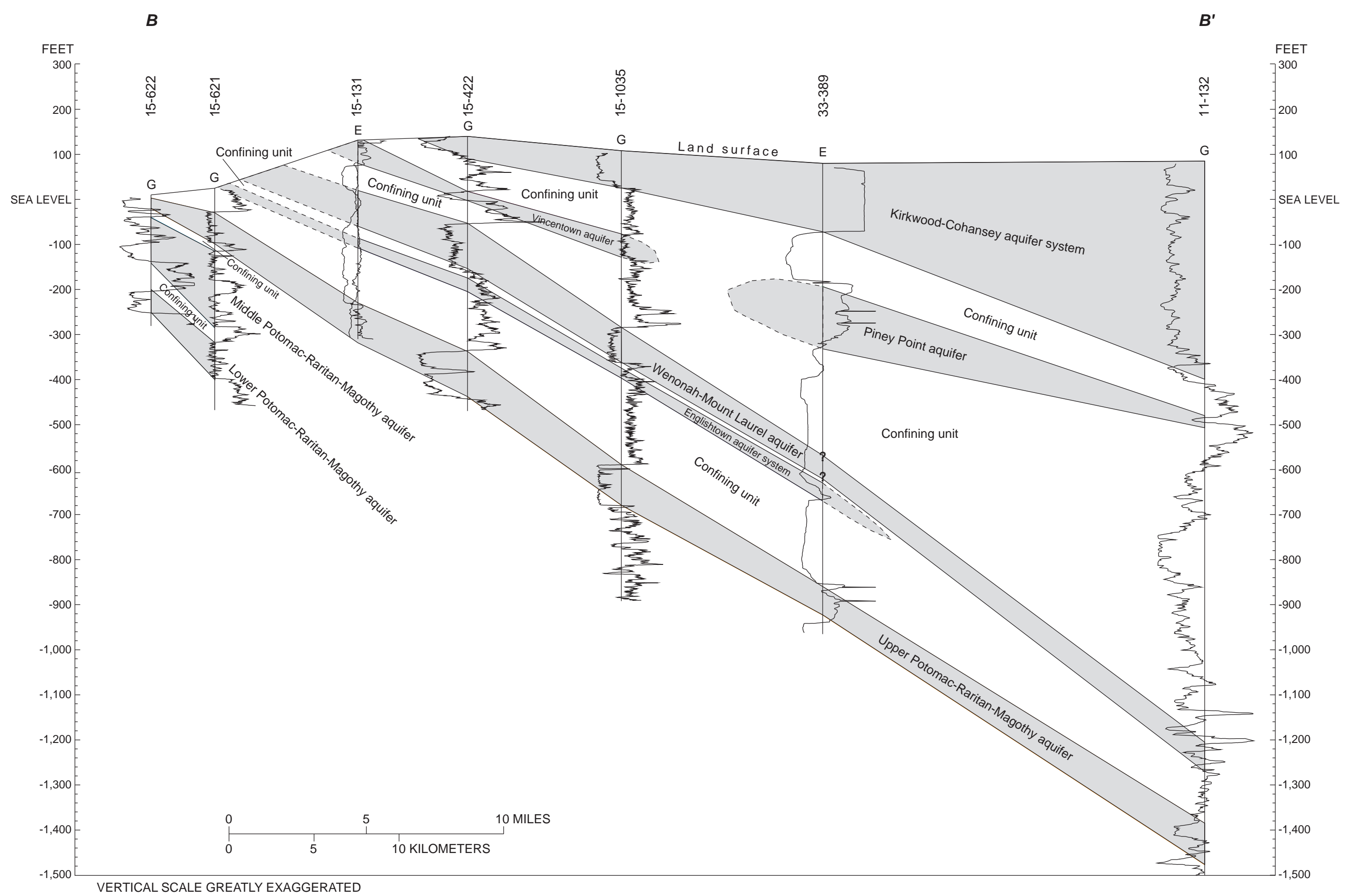
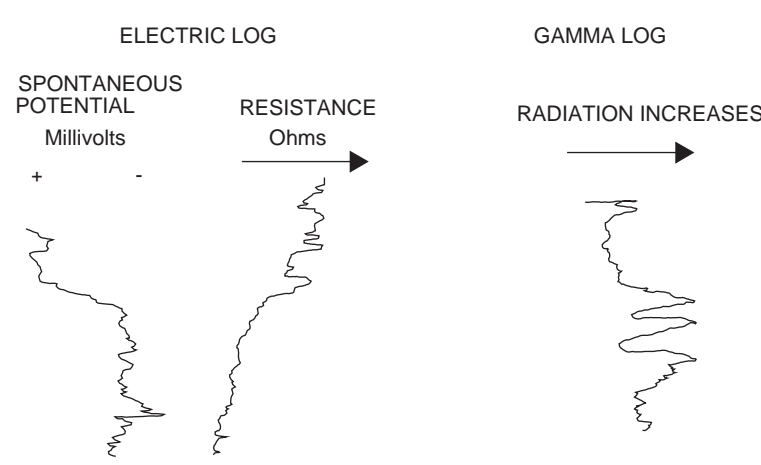
Base from U.S. Geological Survey digital data, 1:100,000, 1983, Universal Transverse Mercator Projection, Zone 18



VERTICAL SCALE GREATLY EXAGGERATED

EXPLANATION

- 11-362 U.S. Geological Survey well number
- E Electric log
- G Gamma log
- Hydrogeologic unit boundary--
Dashed where approximately located,
Queried where inferred



VERTICAL SCALE GREATLY EXAGGERATED

HYDROGEOLOGIC SECTIONS THROUGH THE COASTAL PLAIN SEDIMENTS OF GLOUCESTER AND SALEM COUNTIES, NEW JERSEY

By
Stephen J. Caulier, Glen B. Carleton, and Melissa L. Storck
1999