





LEGEND

-  Irrigated land 1904-5
-  Sewage irrigation 1905
-  Irrigation ditch
-  Pumping plants

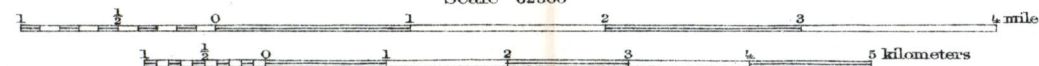
A.H. Thompson, Geographer.  
 A.P. Davis, Topographer in charge.  
 Triangulation by A.P. Davis.  
 Topography by W.S. Post.  
 Surveyed in 1893.

**MAP OF IRRIGATED LANDS, PUMPING PLANTS, AND DISTRIBUTING SYSTEMS IN THE SANTA MONICA QUADRANGLE.**

Irrigated lands mapped by  
 L.B. Brainard and W.N. White.

DATA COMPILED UNDER THE DIRECTION OF W. C. MENDENHALL, 1904.  
 1905.

Scale 62500



Contour interval 50 feet.

Datum is mean sea level.