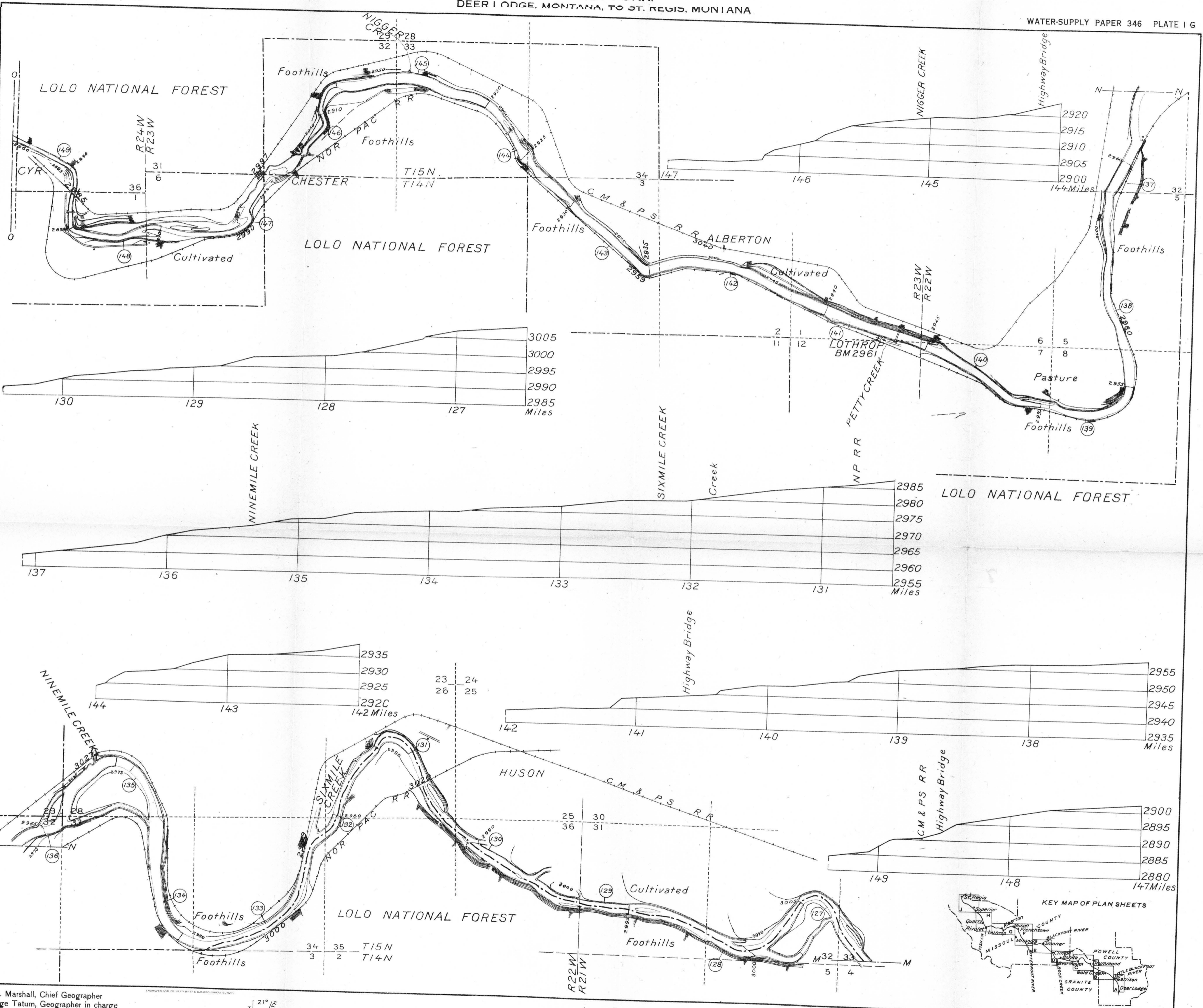
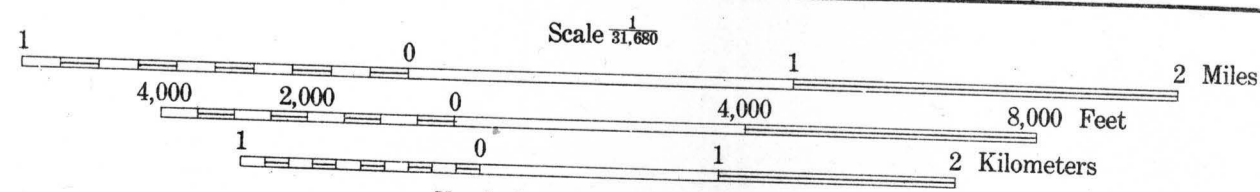


PLAN AND PROFILE OF  
 CLARK FORK,  
 DEER LODGE, MONTANA, TO ST. REGIS, MINNIA



R. B. Marshall, Chief Geographer  
 Sledge Tatum, Geographer in charge  
 Topography by R. C. Seitz  
 Surveyed in 1910

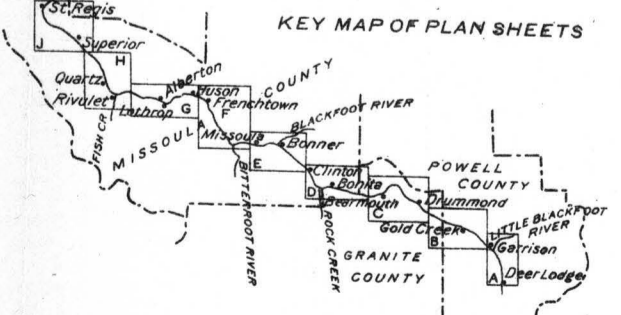
TRUE NORTH  
 MAGNETIC NORTH  
 APPROXIMATE MEAN DECLINATION 1910



Vertical scale 1 inch = 20 feet  
 Contour interval 5 feet  
 Datum is mean sea level  
 1914

DIAGRAM OF TOWNSHIP

6	5	4	3	2	1
7	8	9	10	11	12
13	14	15	16	17	18
19	20	21	22	23	24
25	26	27	28	29	30
31	32	33	34	35	36



Subject to adjustment 9 SHEETS