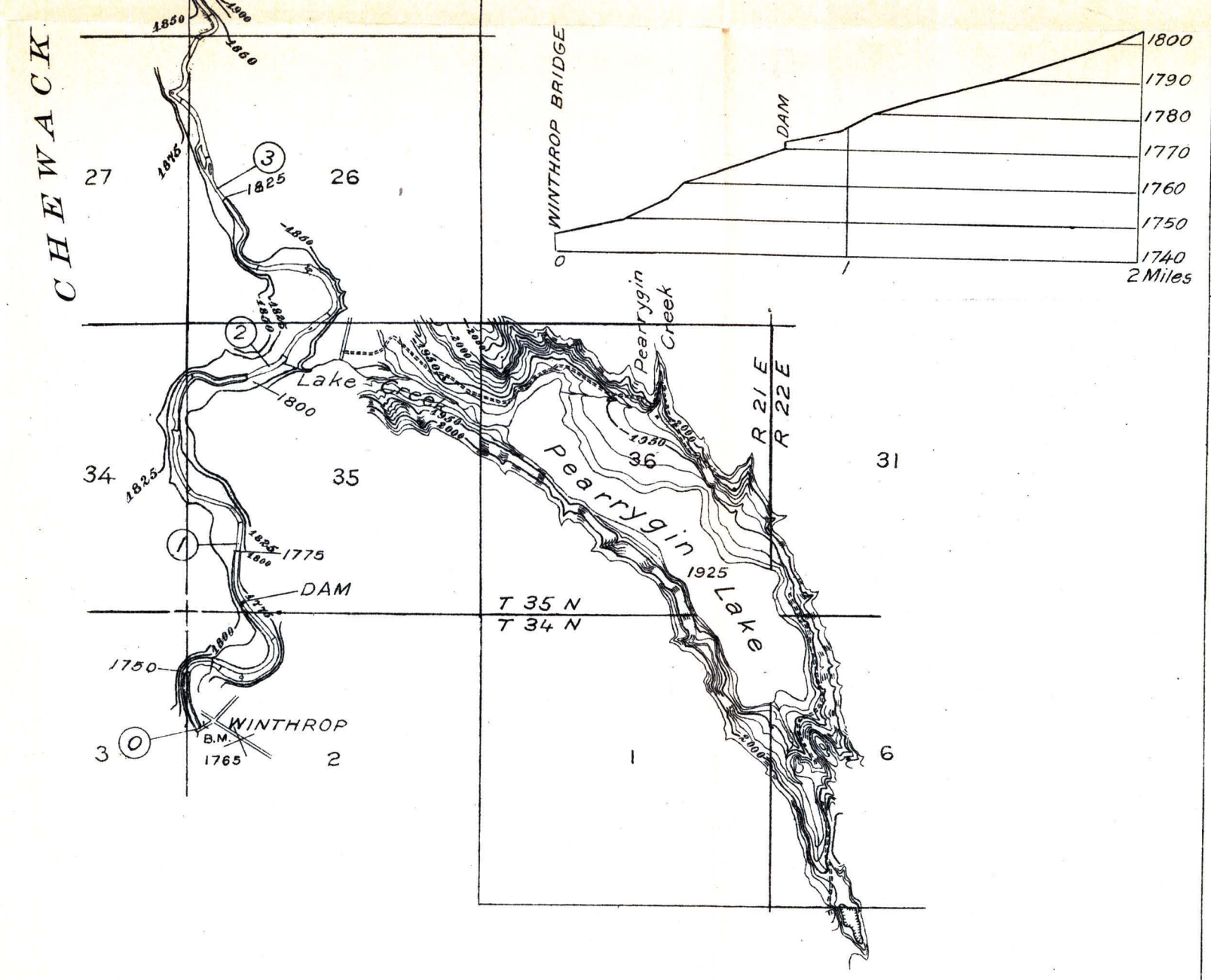
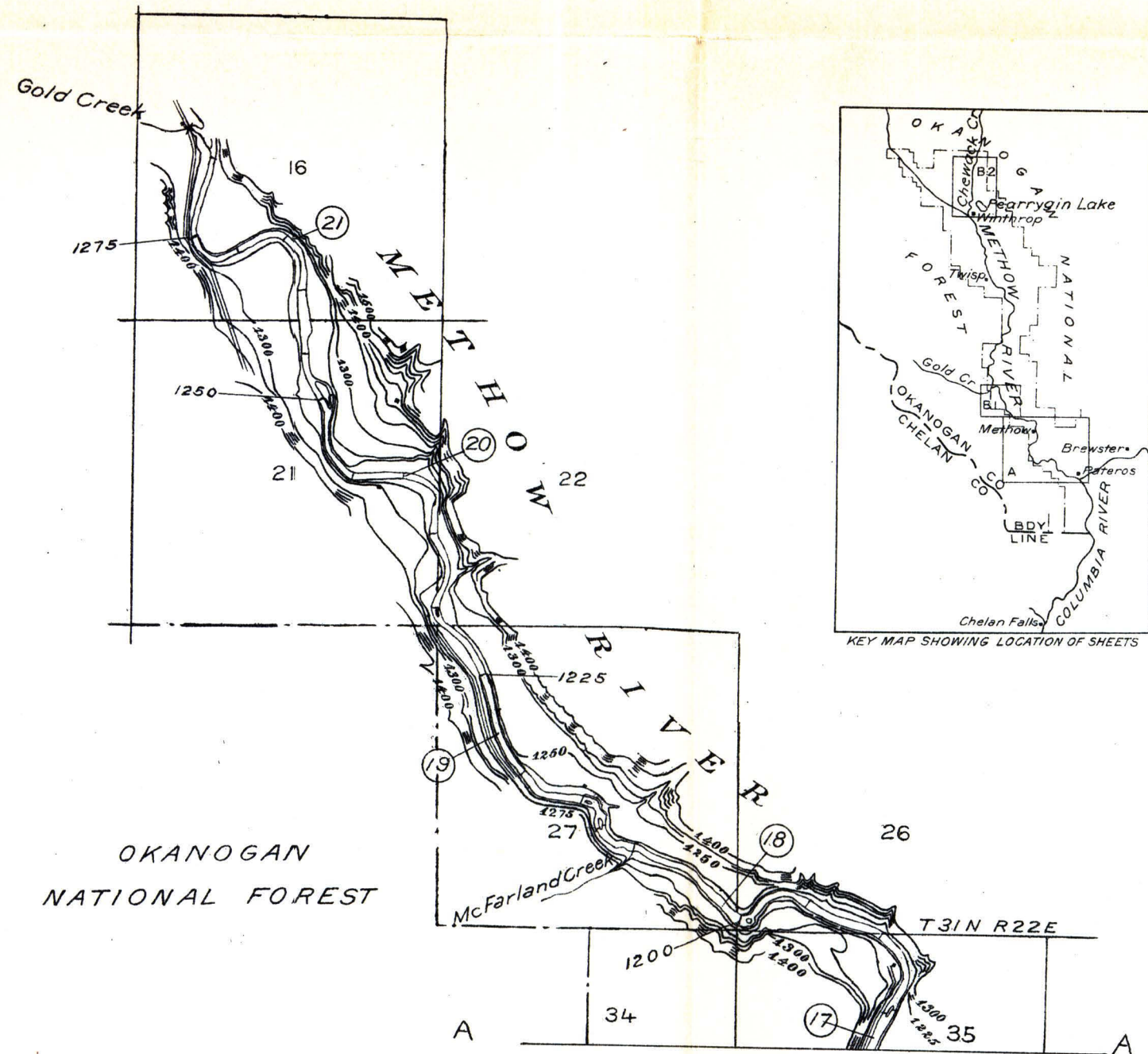
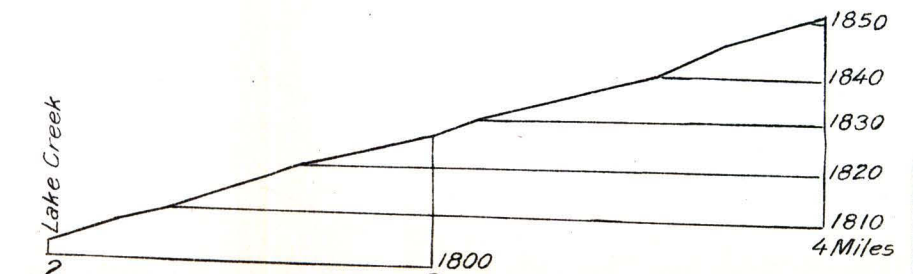
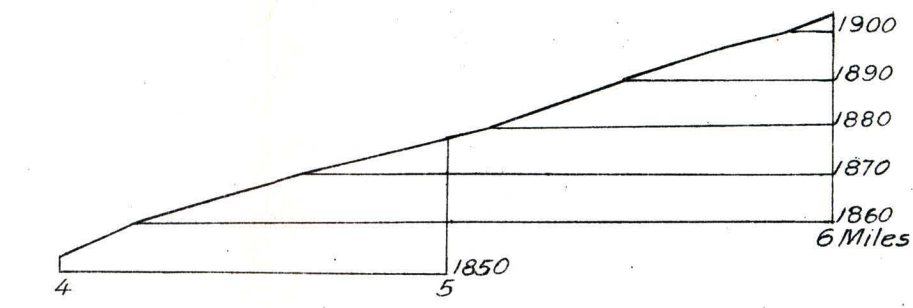
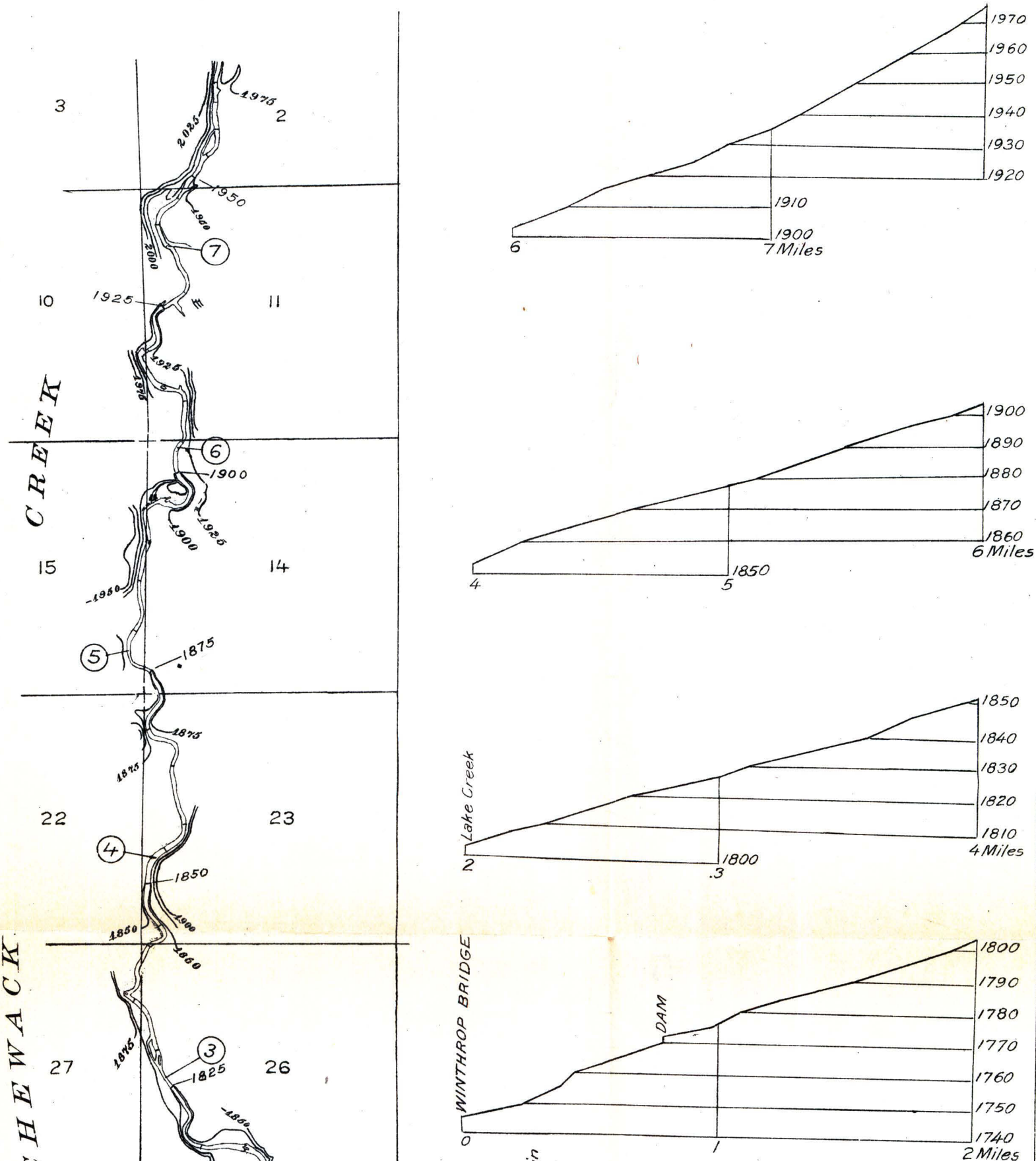
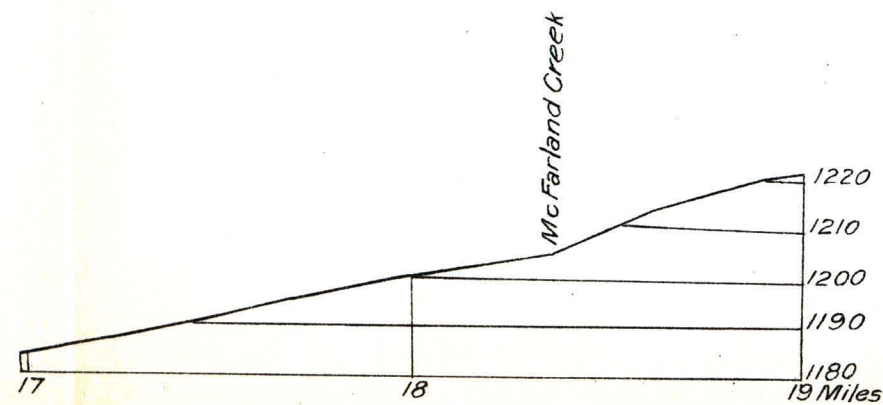
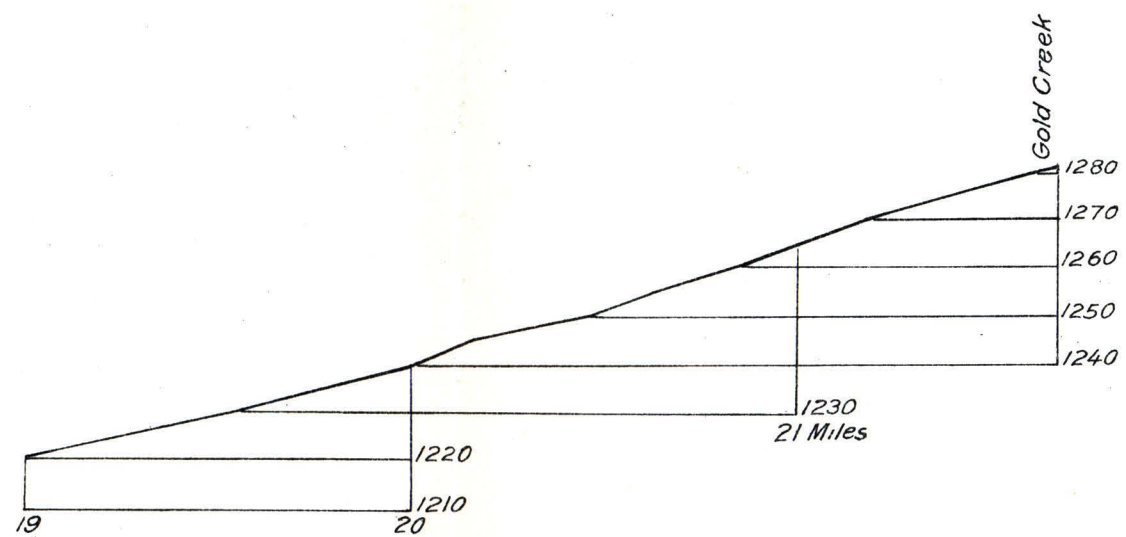


B 1 B 2

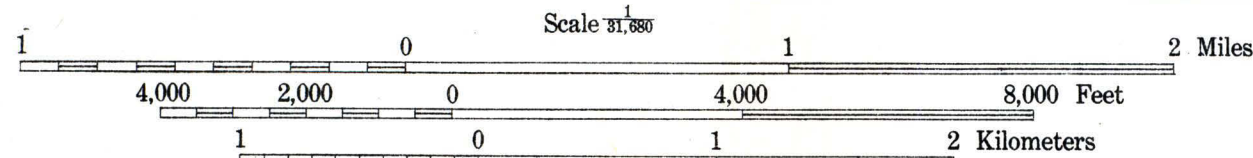


B 1 B 2

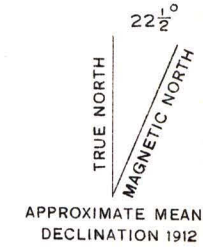
R. B. Marshall, Chief Geographer
 T. G. Gerdine, Geographer in charge
 Topography by A. J. Ogle
 Surveyed in 1912
 SURVEYED IN COOPERATION WITH THE STATE OF WASHINGTON

DIAGRAM OF TOWNSHIP

6	5	4	3	2	1
7	8	9	10	11	12
13	14	15	16	17	18
19	20	21	22	23	24
25	26	27	28	29	30
31	32	33	34	35	36



Vertical scale 1 inch = 40 feet
 Contour interval on land 25 feet
 Contour interval on river surface 5 feet
 Contour interval in vicinity of Pearrygin Lake 10 feet
 Datum is mean sea level
 1915



Subject to adjustment 2 SHEETS