

RECONNAISSANCE
PLAN AND PROFILE OF
GREEN RIVER
COLORADO STATE LINE TO HORSESHOE BEND, UTAH

U. S. GEOLOGICAL SURVEY

SHEET C

WATER-SUPPLY PAPER 396 PLATE VIII

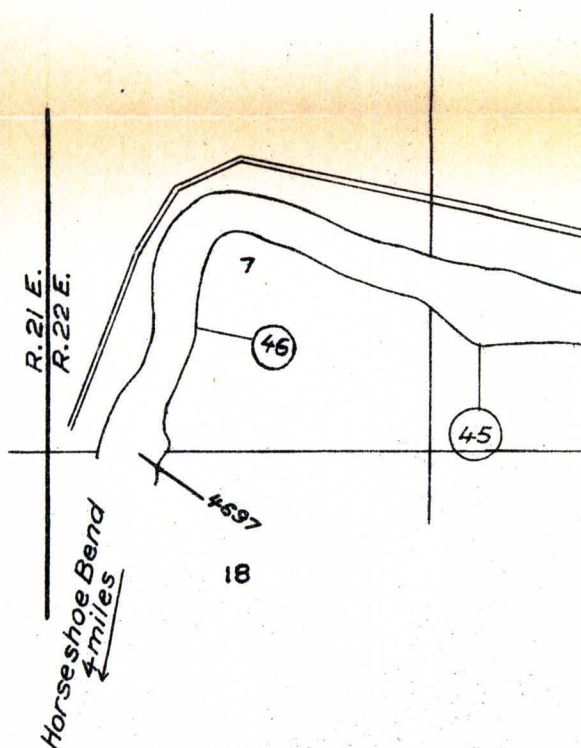
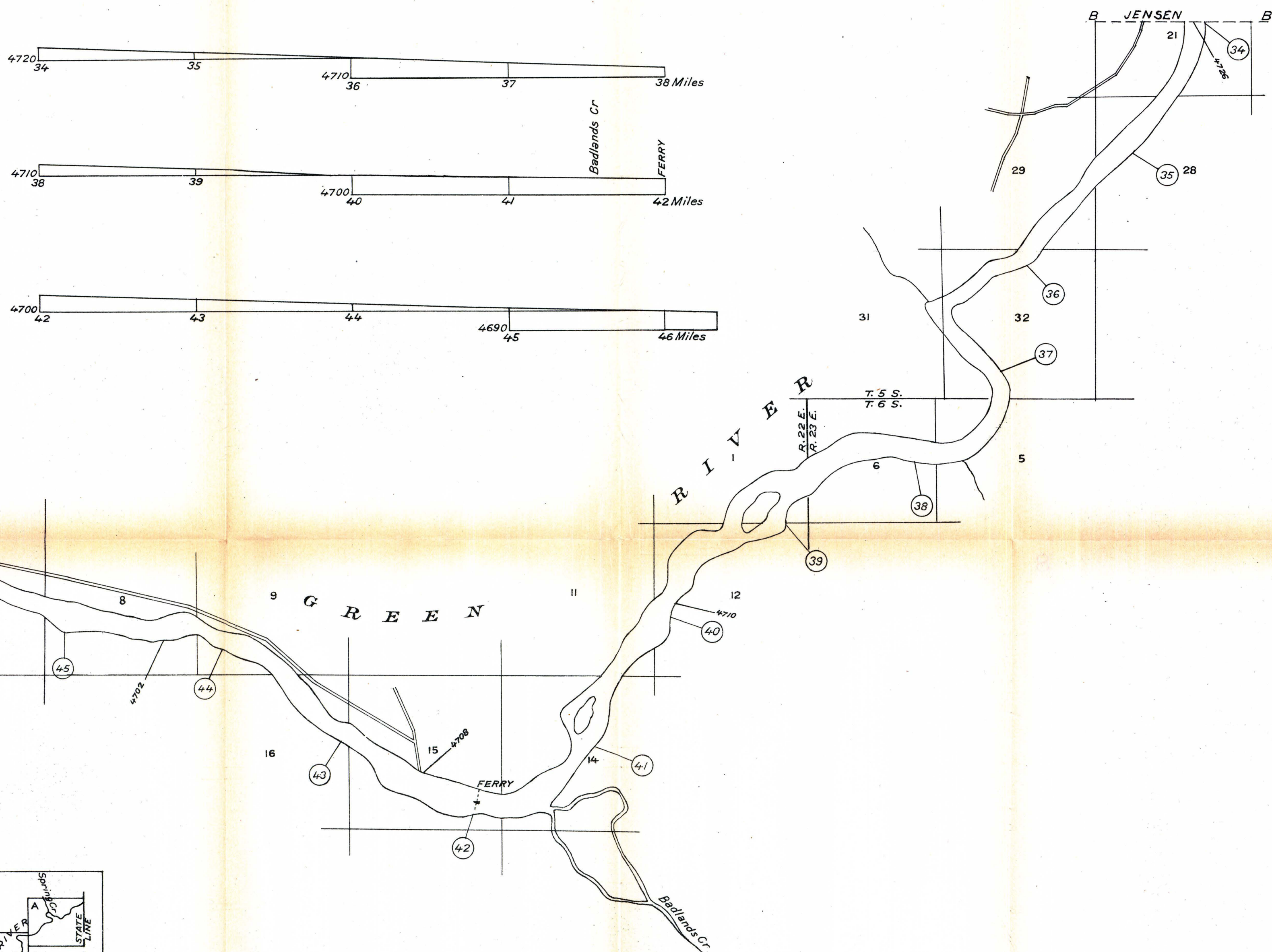
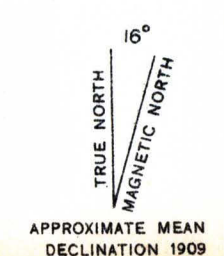
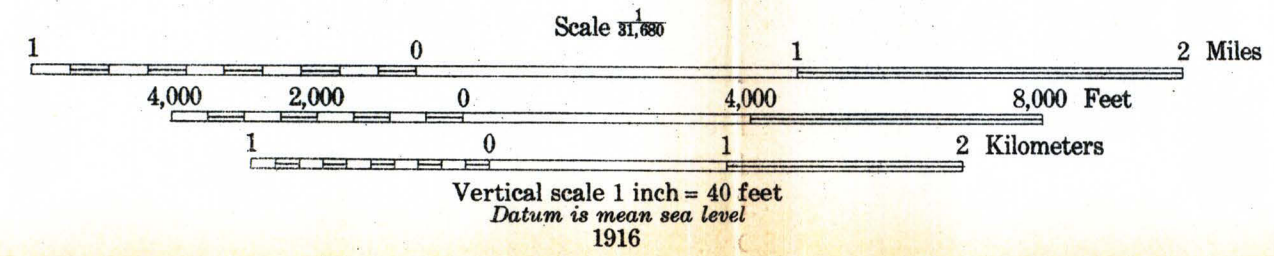


DIAGRAM OF TOWNSHIP

6	5	4	3	2	1
7	8	9	10	11	12
13	14	15	16	17	18
19	20	21	22	23	24
25	26	27	28	29	30
31	32	33	34	35	36



R. B. Marshall, Chief Geographer
E. C. Barnard, Geographer in charge
Topography by Stanley Hargen
based on General Land Office plats
Surveyed in 1909

Subject to adjustment
House Doc. ; 64th Cong., 1st. Sess.

3 SHEETS