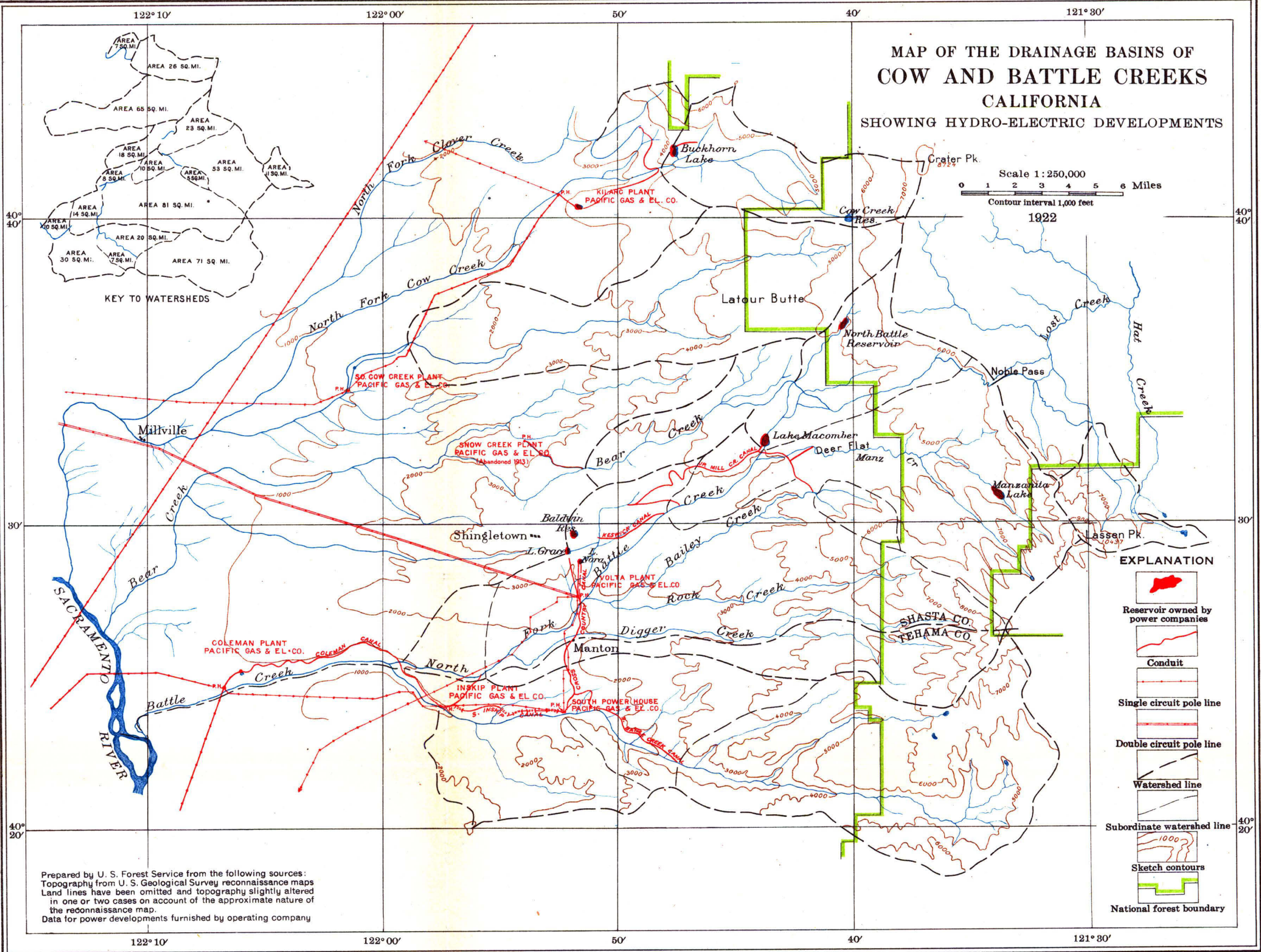



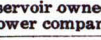


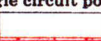
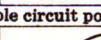
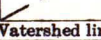
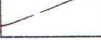
# MAP OF THE DRAINAGE BASINS OF COW AND BATTLE CREEKS CALIFORNIA SHOWING HYDRO-ELECTRIC DEVELOPMENTS

Scale 1:250,000  
0 1 2 3 4 5 6 Miles  
Contour interval 1,000 feet  
1922



KEY TO WATERSHEDS

### EXPLANATION

-  Reservoir owned by power companies
-  Conduit
-  Single circuit pole line
-  Double circuit pole line
-  Watershed line
-  Subordinate watershed line
-  Sketch contours
-  National forest boundary

Prepared by U. S. Forest Service from the following sources:  
Topography from U. S. Geological Survey reconnaissance maps  
Land lines have been omitted and topography slightly altered  
in one or two cases on account of the approximate nature of  
the reconnaissance map.  
Data for power developments furnished by operating company