

EXPLANATION

- Qal**  
Alluvium and lake deposits  
(Gravel, sand, and clay. Coarser types are water-bearing; finer types are non-water-bearing or yield meager supplies of poor water. Most abundant supplies are in Musselshell Valley)
  - Tf**  
Upper part of Fort Union formation  
(Beds of sandstone, shale, and coal. The sandstones generally yield small to moderate supplies of potable water)
  - Tf1**  
Lebo shale member of Fort Union formation  
(Somber-colored sandy shale and thin-bedded sandstone. Yields some potable water but is less productive than upper part of Fort Union formation and less productive than underlying Lance formation)
  - Tl**  
Lance formation  
(Alternating beds of sandstone and shale. The sandstone generally yields small to moderate supplies of potable water)
  - Kb**  
Bearpaw shale  
(Dark shale with a little sandstone near base. Generally non-water-bearing or yielding only meager supplies of poor water)
  - Kj**  
Judith River formation  
(Sandstone and shale. Lower part chiefly sandstone. The sandstone generally yields small supplies of potable water)
  - Kcl**  
Claggett formation  
(Dark shale and a little sandstone. Generally non-water-bearing or yields only meager supplies of poor water)
  - Ke**  
Eagle sandstone  
(Chiefly sandstone but including some shale. The sandstone generally yields small to moderate supplies of potable water)
  - Kc**  
Colorado shale  
(Chiefly shale but includes a little sandstone and conglomerate. Generally non-water-bearing or yields only meager supplies of poor water)
  - Kk**  
Kootenai formation  
(Maroon, drab, greenish-gray, and white sandy shale and some sandstone. Some of the sandstone beds yield potable water)
  - und**  
Formations older than the Kootenai
- Fault**  
Strike and dip of bed

QUATERNARY

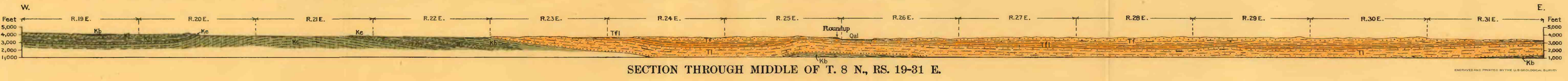
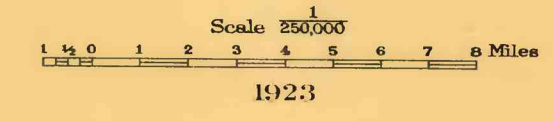
Eocene  
Fort Union formation  
TERTIARY

Eocene (?)  
TERTIARY (?)

Upper Cretaceous  
Montana group  
CRETACEOUS

Lower Cretaceous

GEOLOGIC MAP OF MUSSELHELL AND GOLDEN VALLEY COUNTIES, MONT.



SECTION THROUGH MIDDLE OF T. 8 N., RS. 19-31 E.

ENGRAVED AND PRINTED BY THE U.S. GEOLOGICAL SURVEY