

EXPLANATION

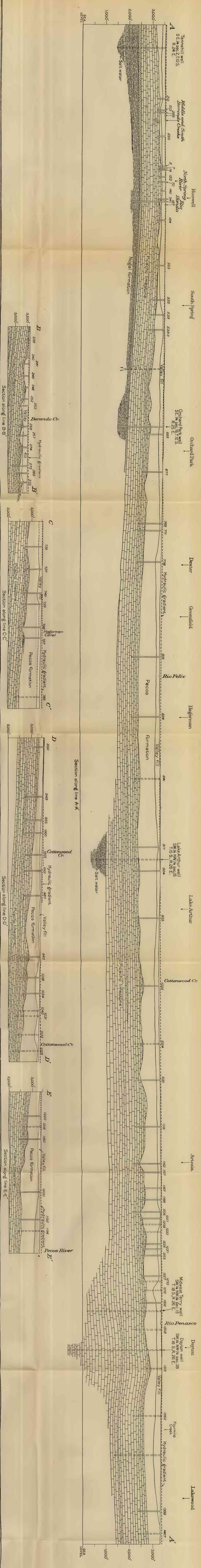
Contours on upper surface of Picacho limestone showing elevation above sea level; Broken line indicates that location of contour is uncertain. Contour interval 50 feet

Well whose surface elevation was determined accurately by leveling. Figure in depth below surface at which Picacho limestone was encountered in the well. Query after figure indicates that depth at which Picacho limestone was encountered is uncertain

Well whose surface elevation was determined from topographic maps

Well whose surface elevation was estimated or obtained from less reliable sources

▲ Bench marks



Irrigation and artesian data by A. G. Fiedler
 Base compiled from U. S. Land Office plats,
 maps by Atchison, Topeka & Santa Fe Ry.,
 State highway maps, maps by
 county surveyors, and field notes

CONTOUR MAP OF THE UPPER SURFACE OF THE PICACHO LIMESTONE AND SECTIONS
 ACROSS THE ROSWELL AREA OF ARTESIAN FLOW

Geology by S. S. Nye