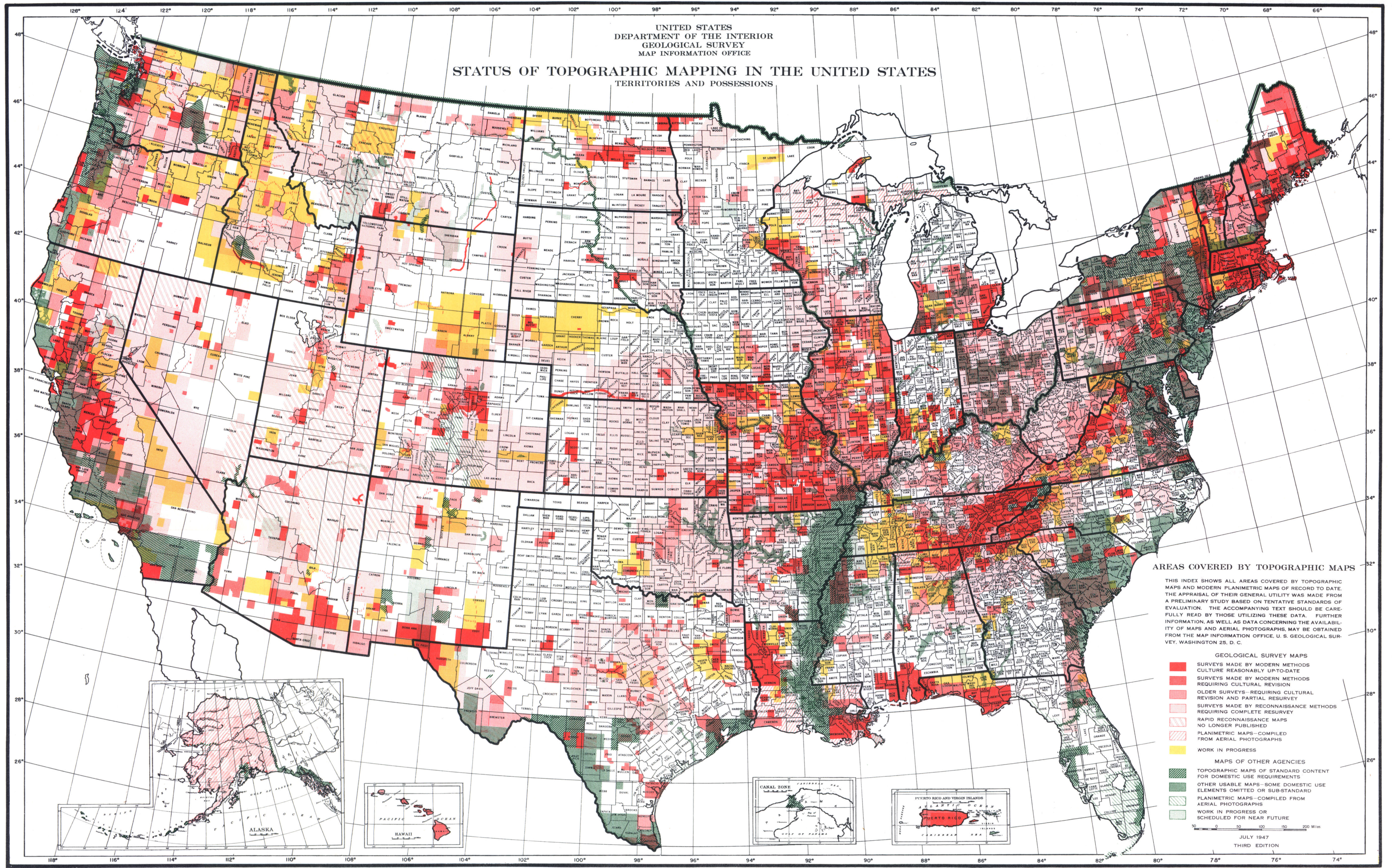


UNITED STATES  
DEPARTMENT OF THE INTERIOR  
GEOLOGICAL SURVEY  
MAP INFORMATION OFFICE

STATUS OF TOPOGRAPHIC MAPPING IN THE UNITED STATES  
TERRITORIES AND POSSESSIONS



AREAS COVERED BY TOPOGRAPHIC MAPS

THIS INDEX SHOWS ALL AREAS COVERED BY TOPOGRAPHIC MAPS AND MODERN PLANIMETRIC MAPS OF RECORD TO DATE. THE APPRAISAL OF THEIR GENERAL UTILITY WAS MADE FROM A PRELIMINARY STUDY BASED ON TENTATIVE STANDARDS OF EVALUATION. THE ACCOMPANYING TEXT SHOULD BE CAREFULLY READ BY THOSE UTILIZING THESE DATA. FURTHER INFORMATION, AS WELL AS DATA CONCERNING THE AVAILABILITY OF MAPS AND AERIAL PHOTOGRAPHS, MAY BE OBTAINED FROM THE MAP INFORMATION OFFICE, U. S. GEOLOGICAL SURVEY, WASHINGTON 25, D. C.

- GEOLOGICAL SURVEY MAPS**
  - SURVEYS MADE BY MODERN METHODS CULTURE REASONABLY UP-TO-DATE
  - SURVEYS MADE BY MODERN METHODS REQUIRING CULTURAL REVISION
  - OLDER SURVEYS—REQUIRING CULTURAL REVISION AND PARTIAL RESURVEY
  - SURVEYS MADE BY RECONNAISSANCE METHODS REQUIRING COMPLETE RESURVEY
  - RAPID RECONNAISSANCE MAPS NO LONGER PUBLISHED
  - PLANIMETRIC MAPS—COMPILED FROM AERIAL PHOTOGRAPHS
  - WORK IN PROGRESS
- MAPS OF OTHER AGENCIES**
  - TOPOGRAPHIC MAPS OF STANDARD CONTENT FOR DOMESTIC USE REQUIREMENTS
  - OTHER USABLE MAPS—SOME DOMESTIC USE ELEMENTS OMITTED OR SUB-STANDARD
  - PLANIMETRIC MAPS—COMPILED FROM AERIAL PHOTOGRAPHS
  - WORK IN PROGRESS OR SCHEDULED FOR NEAR FUTURE

JULY 1947  
THIRD EDITION