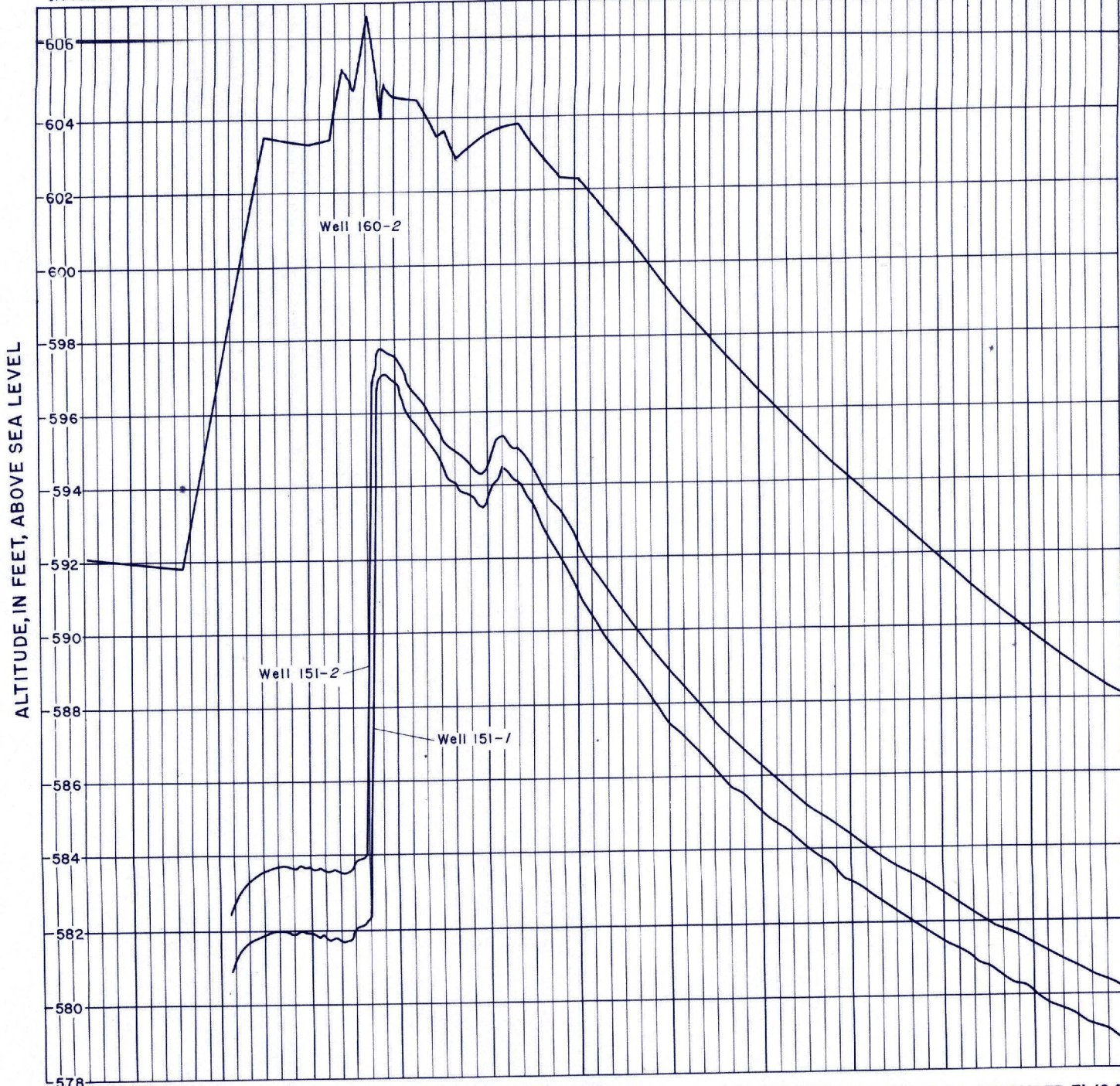


JANUARY FEBRUARY MARCH APRIL MAY JUNE JULY AUGUST SEPTEMBER OCTOBER NOVEMBER DECEMBER



GRAPHS OF WATER LEVEL IN WELLS 151-1, 151-2, AND 160-2, DIVIDE AREA, BUTLER COUNTY, JANUARY 17 TO DECEMBER 31, 1940