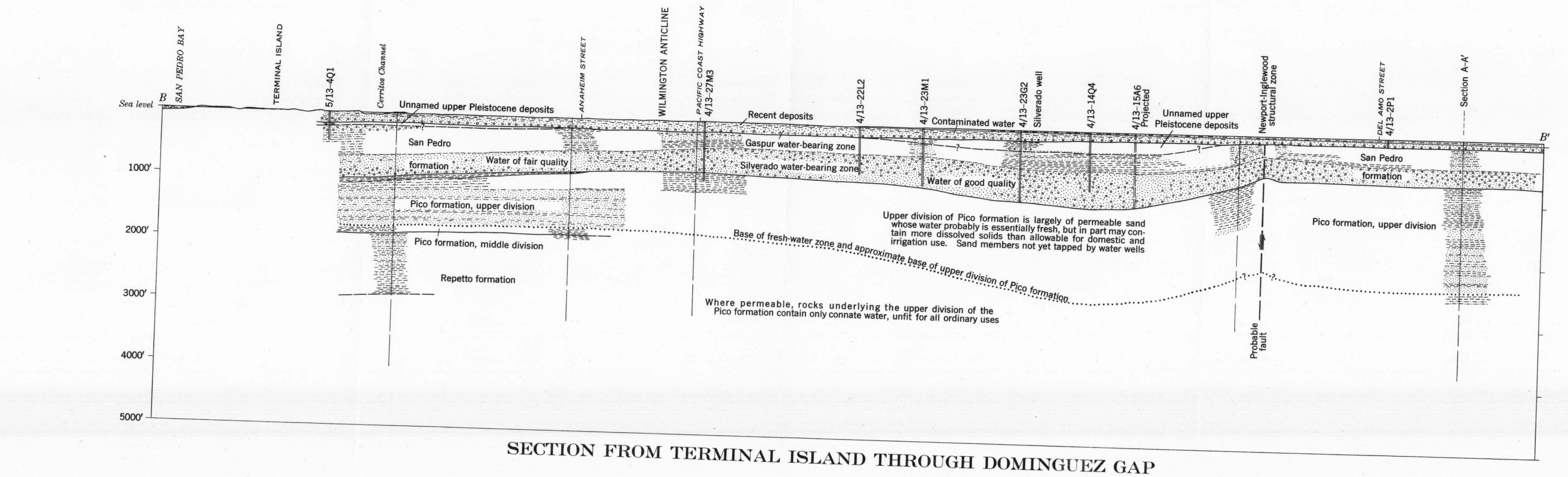
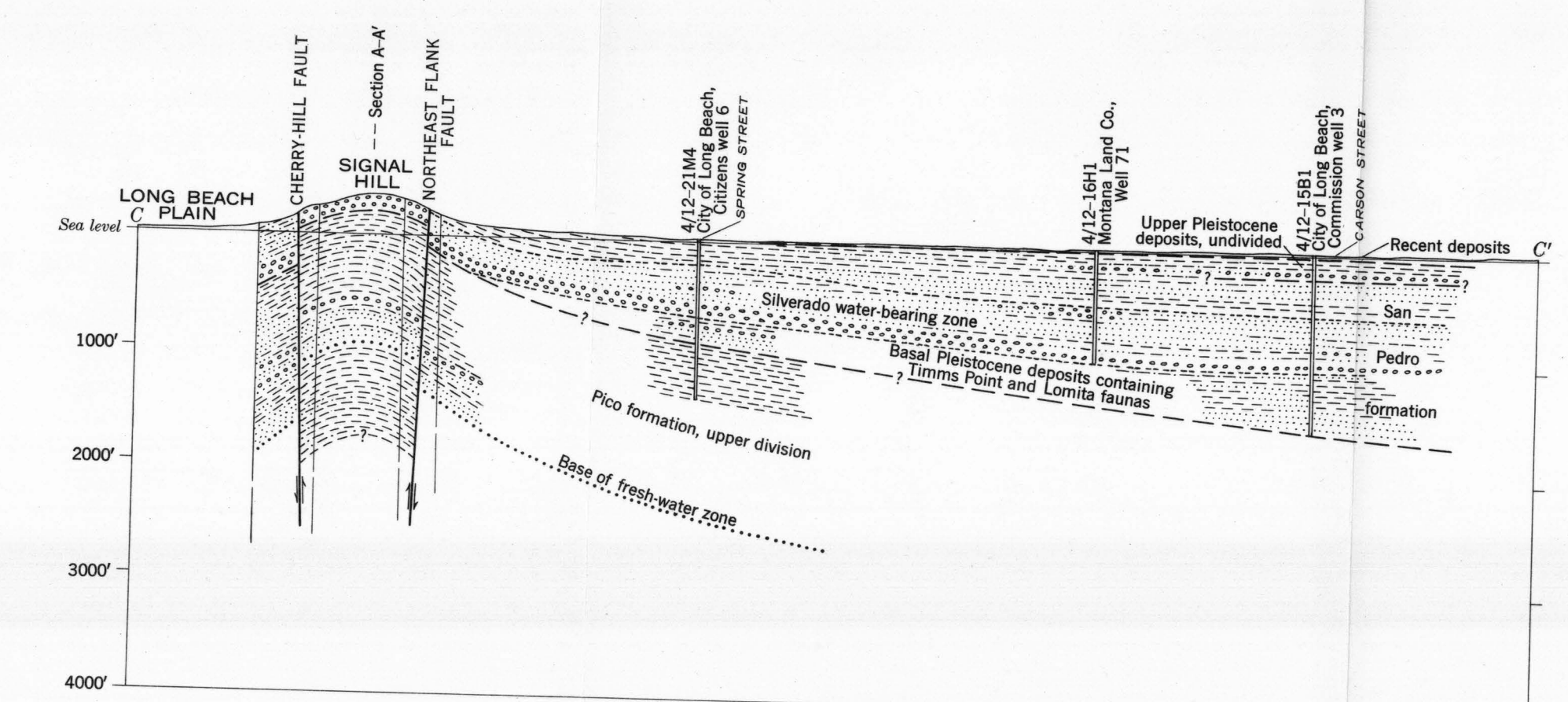


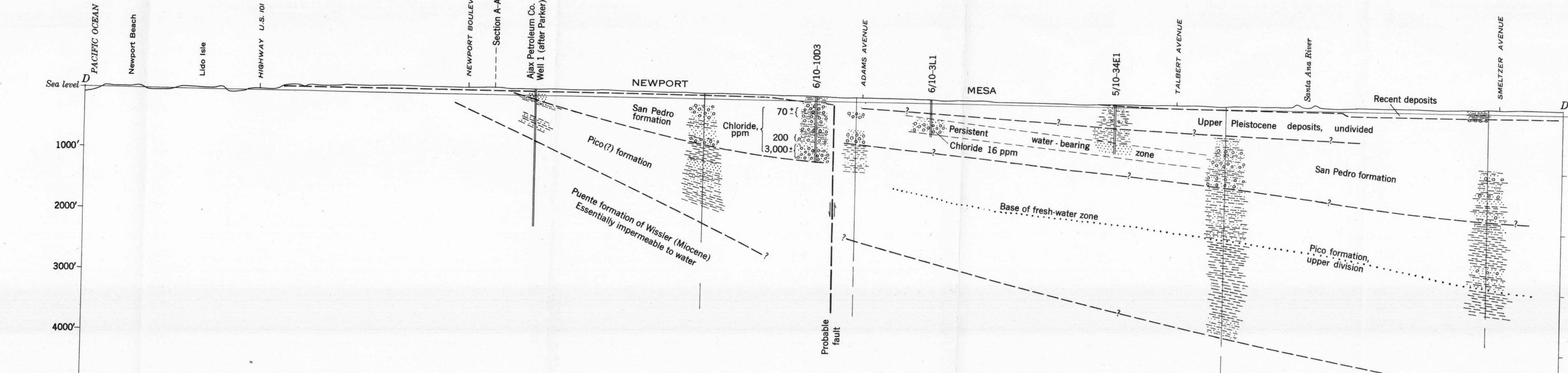
SECTION ALONG NEWPORT-INGLEWOOD STRUCTURAL ZONE FROM DOMINGUEZ HILL TO NEWPORT MESA



SECTION FROM TERMINAL ISLAND THROUGH DOMINGUEZ GAP

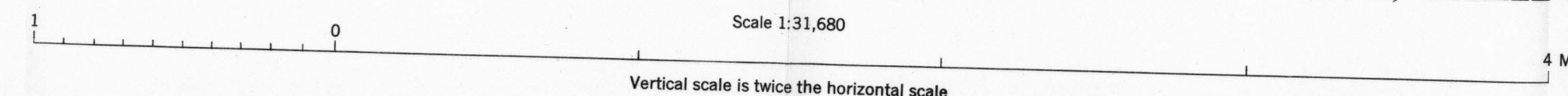


SECTION ACROSS SIGNAL HILL



SECTION FROM NEWPORT BEACH NORTHWARD ACROSS NEWPORT MESA

GEOLOGIC SECTIONS IN THE LONG BEACH-SANTA ANA AREA, CALIFORNIA



EXPLANATION

Undifferentiated vertical lines in section represent position of electric logs used for interpretation of lithology.
See plate 3 for location of sections