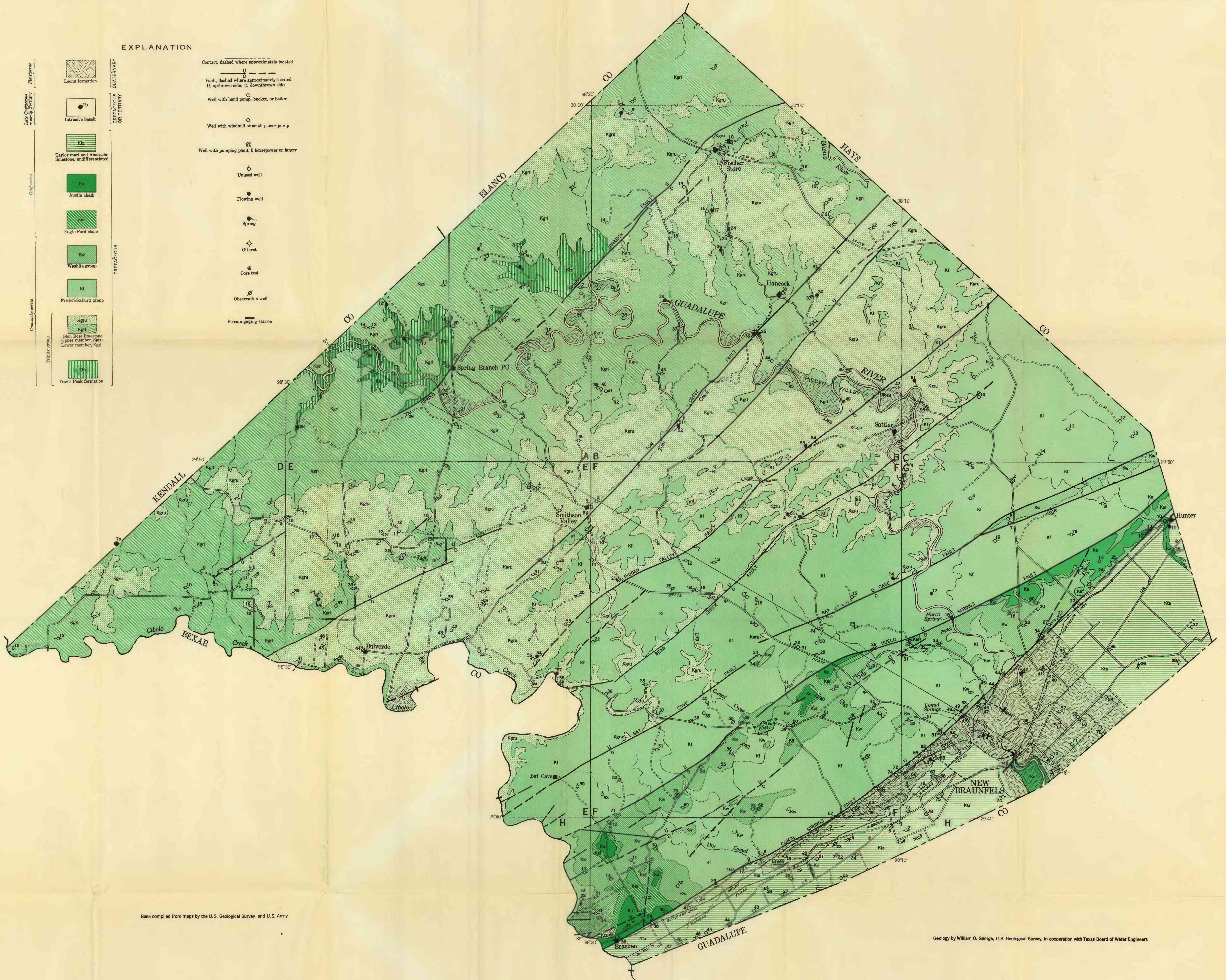
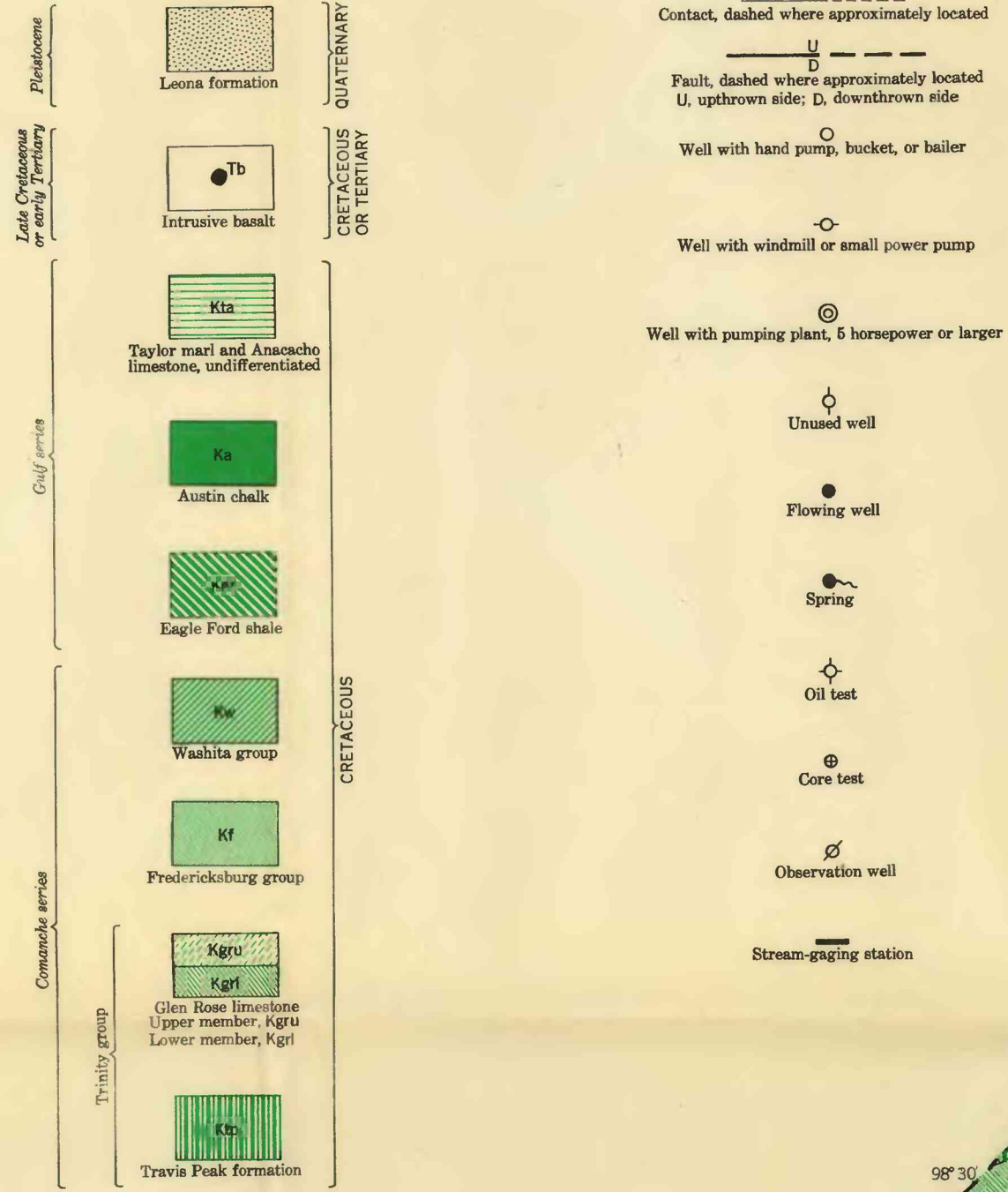
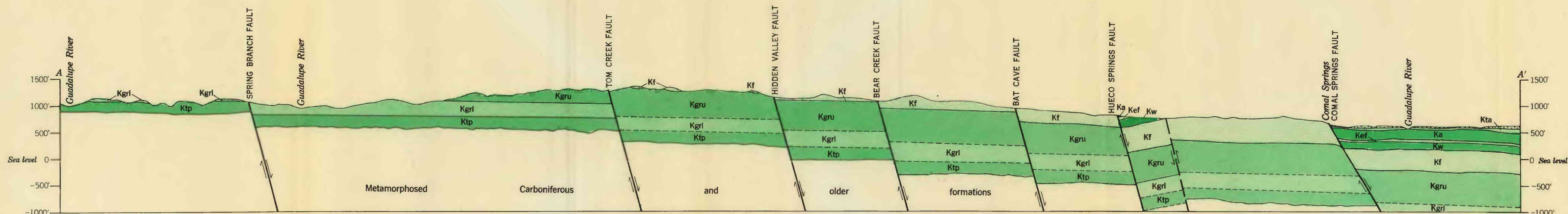


EXPLANATION



Base compiled from maps by the U.S. Geological Survey and U.S. Army

Geology by William O. George, U.S. Geological Survey, in cooperation with Texas Board of Water Engineers



GEOLOGIC MAP AND SECTION OF COMAL COUNTY, TEXAS, SHOWING LOCATION OF RECORDED WELLS AND SPRINGS

