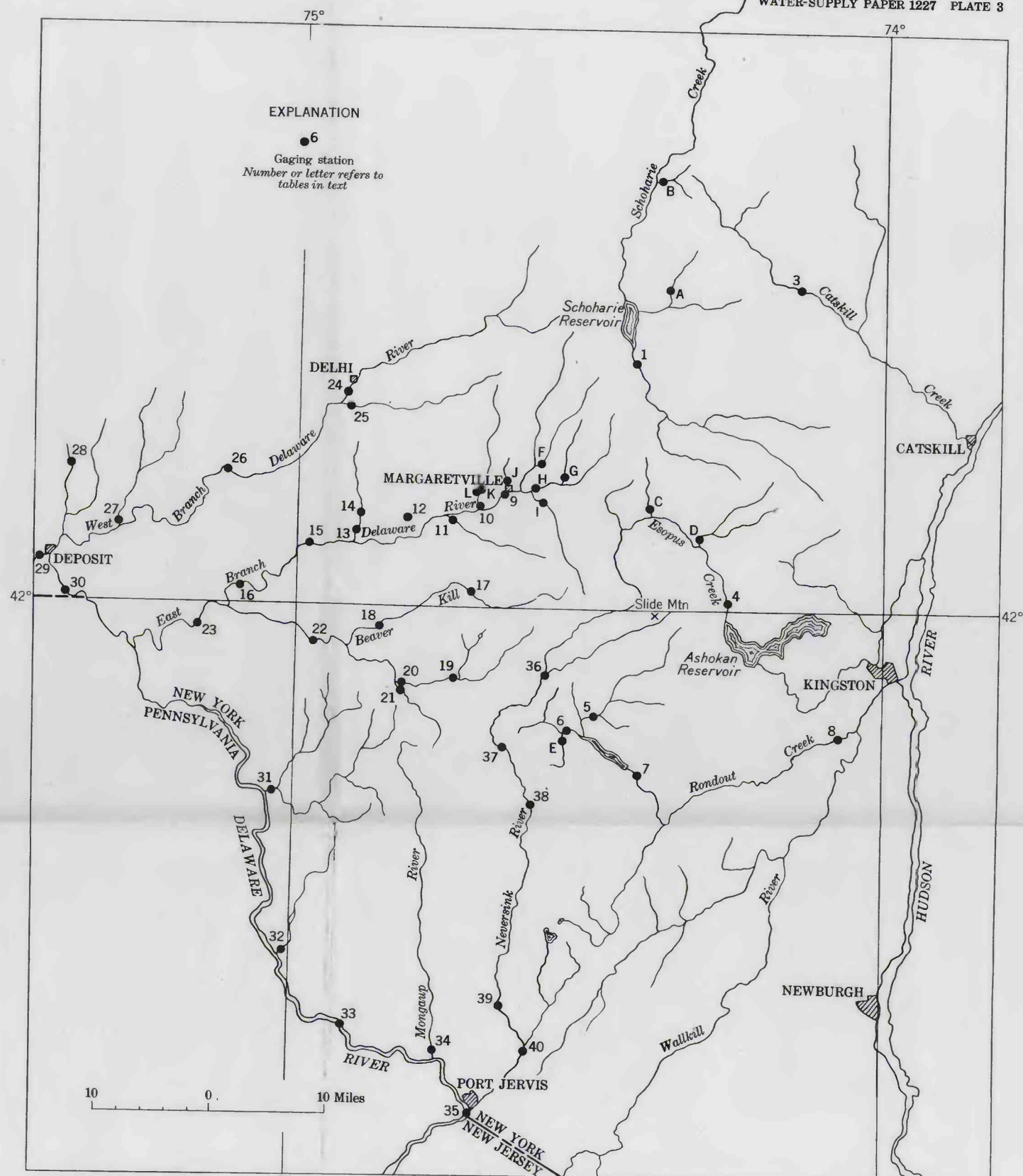
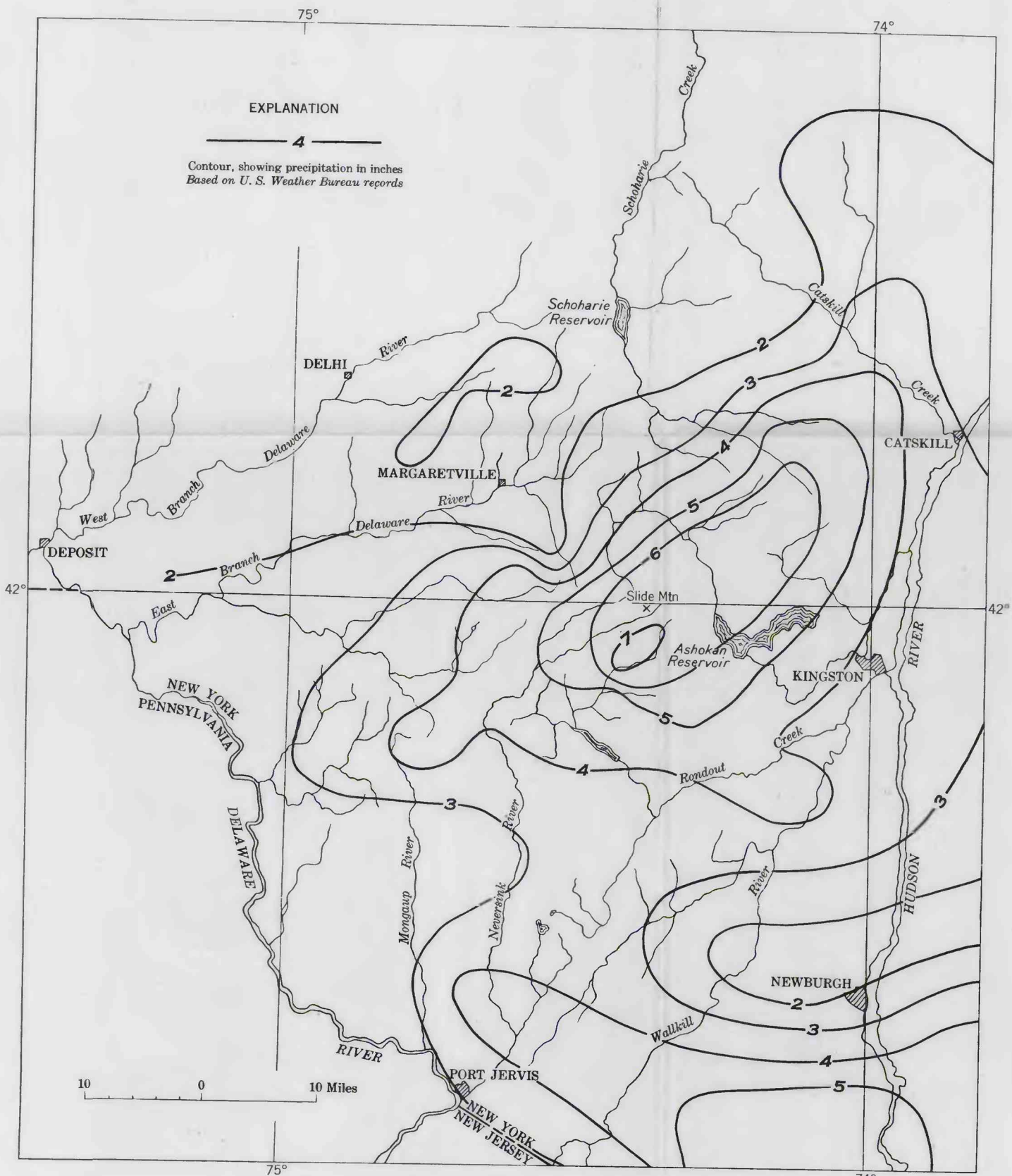


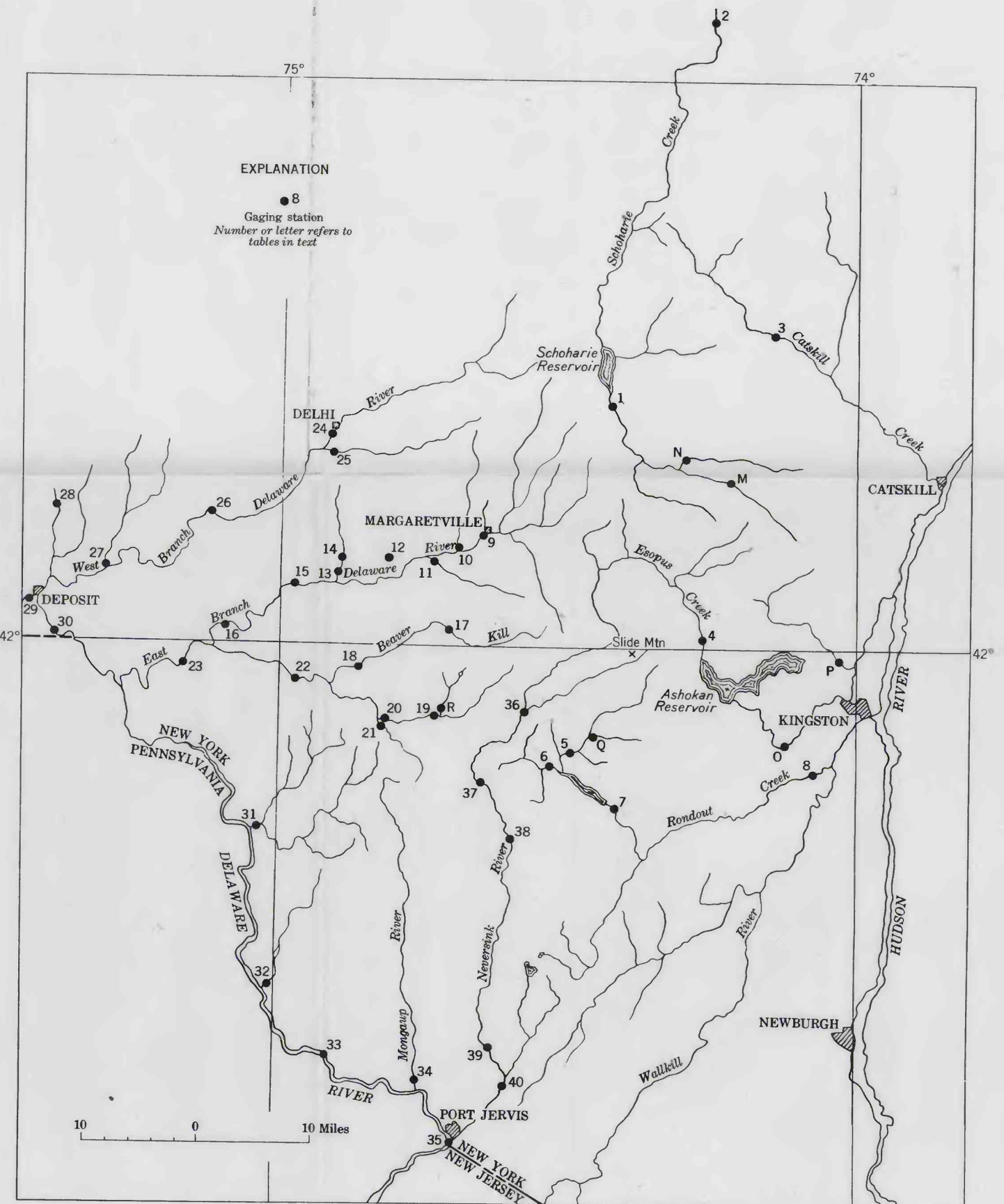
TOTAL PRECIPITATION, NOVEMBER 23-25, 1950



SITES OF GAGING STATIONS AND DISCHARGE DETERMINATIONS
FLOOD OF NOVEMBER 25-26, 1950



TOTAL PRECIPITATION, MARCH 29-31, 1951



SITES OF GAGING STATIONS AND DISCHARGE DETERMINATIONS
FLOOD OF MARCH 30-31, 1951

MAPS OF CATSKILL MOUNTAIN REGION, NEW YORK, SHOWING PRECIPITATION AND SITES OF GAGING STATIONS AND DISCHARGE DETERMINATIONS

421315 O - 58 (in pocket)