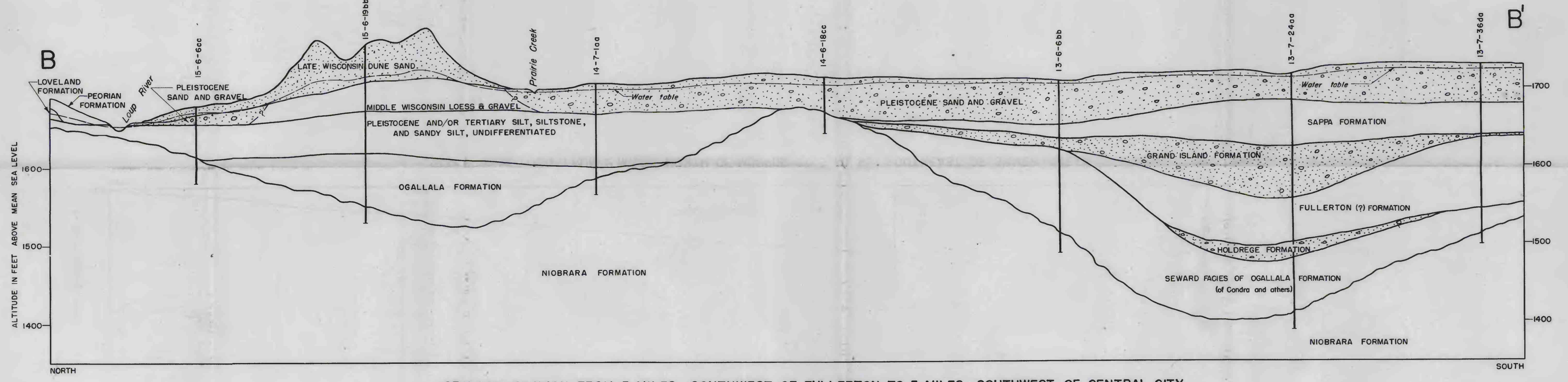
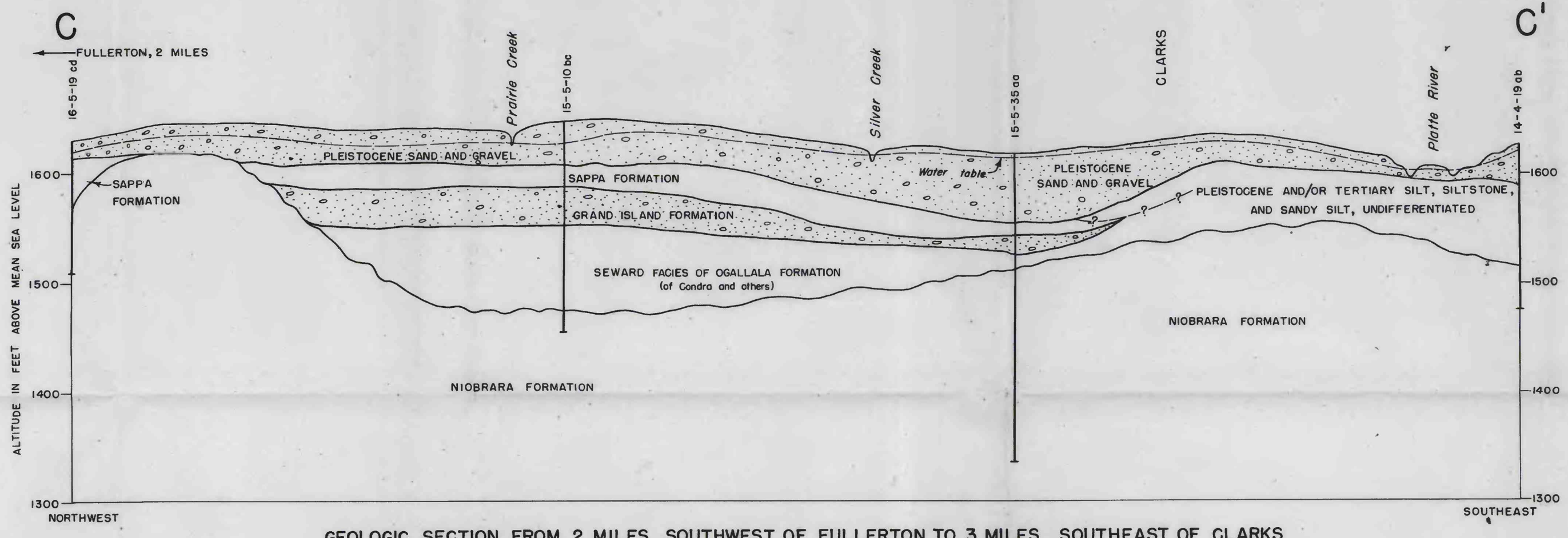


GEOLOGIC SECTION FROM 5 MILES NORTH OF PALMER TO 6 MILES WEST OF CHAPMAN



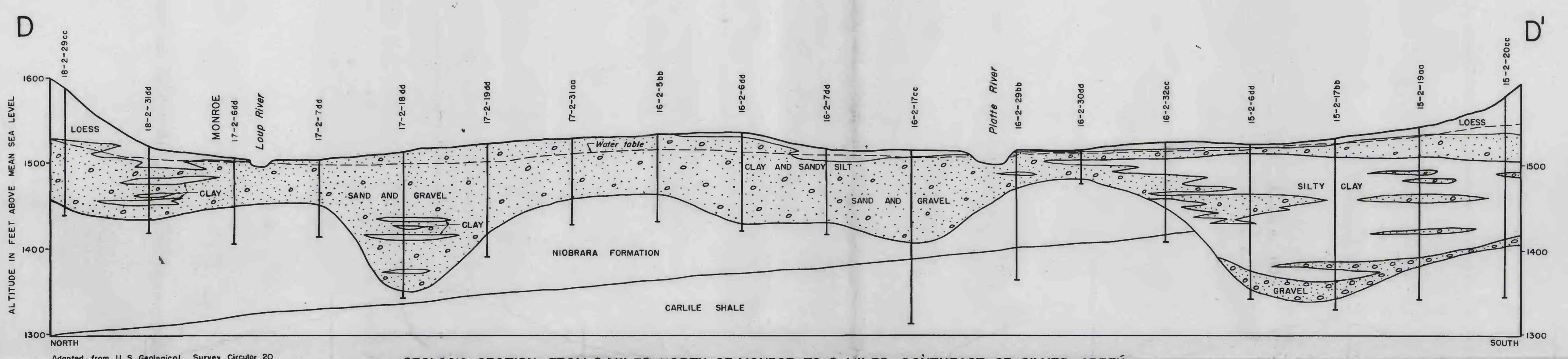
GEOLOGIC SECTION FROM 5 MILES SOUTHWEST OF FULLERTON TO 5 MILES SOUTHWEST OF CENTRAL CITY



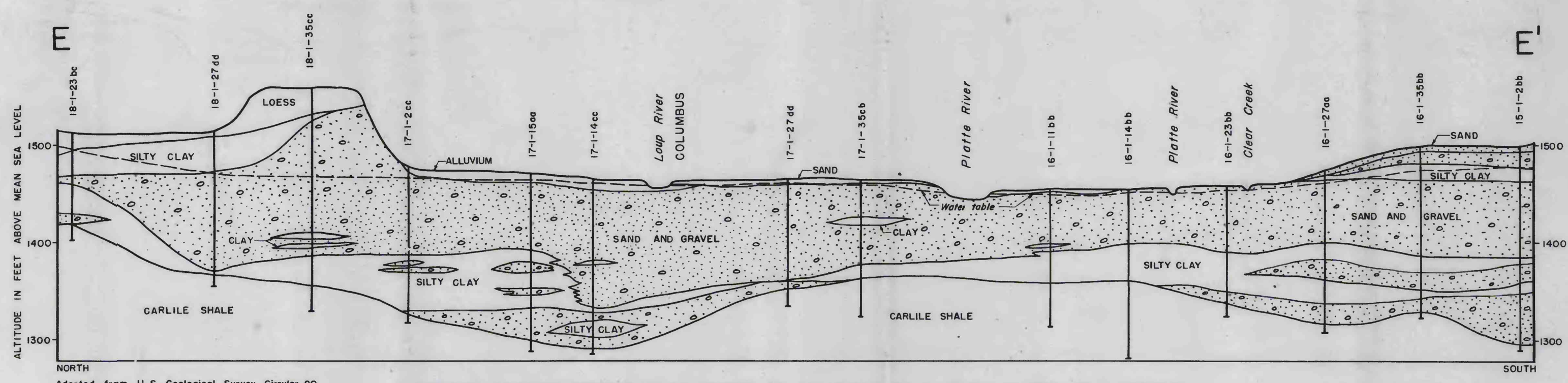
GEOLOGIC SECTION FROM 2 MILES SOUTHWEST OF FULLERTON TO 3 MILES SOUTHEAST OF CLARKS

GENERALIZED GEOLOGIC COLUMN

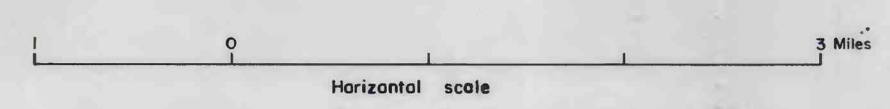
SYS-TEM	SER-IES	FORMATION
QUATERNARY	PLEISTOCENE	VERY LATE PLEISTOCENE SAND AND GRAVEL
		DUNE SAND
		PEORIAN FORMATION
	ILLINOIAN-SANGAMON	LOVELAND FORMATION
		SAPPA FORMATION
	KANSAN-YARMOUTH	GRAND ISLAND FORMATION
		FULLERTON FORMATION
	NEBRASKIAN-AFTONIAN	HOLDREGE FORMATION
		OGALLALA FORMATION INCLUDING SEWARD FACIES (of Condra and others)
	TER-TIARY	PIERRE SHALE
UPPER CRETACEOUS	NIOBARA FORMATION	
	CARLILE SHALE	



GEOLOGIC SECTION FROM 2 MILES NORTH OF MONROE TO 6 MILES SOUTHEAST OF SILVER CREEK



GEOLOGIC SECTION FROM 7 MILES NORTH OF COLUMBUS TO 8 MILES SOUTH OF COLUMBUS



GEOLOGIC SECTIONS OF THE PRAIRIE CREEK UNIT, NEBRASKA