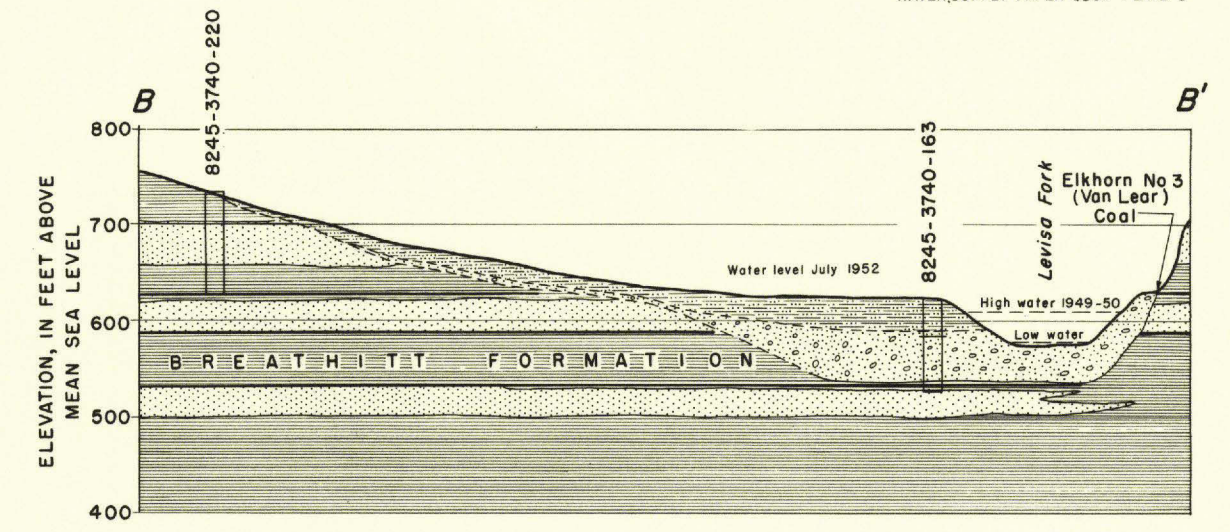
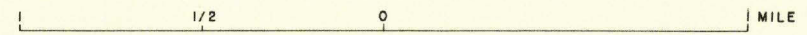
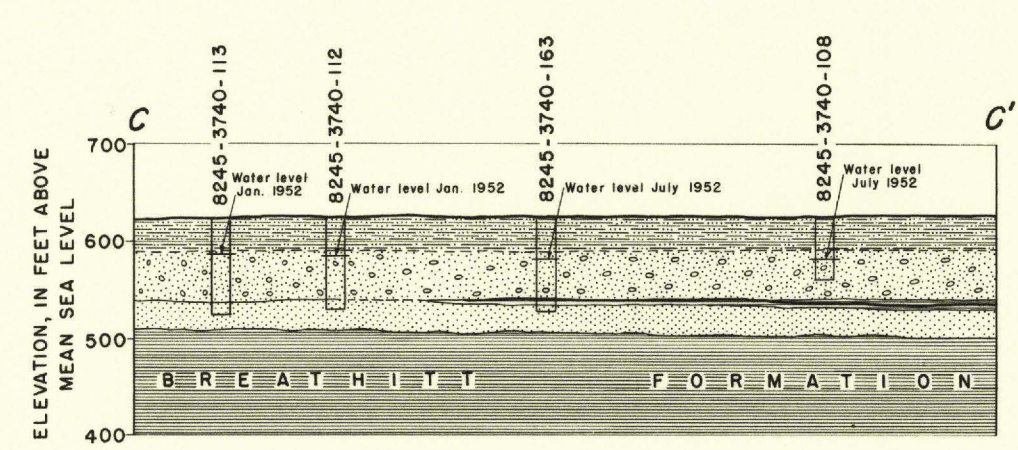
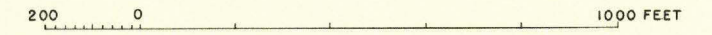


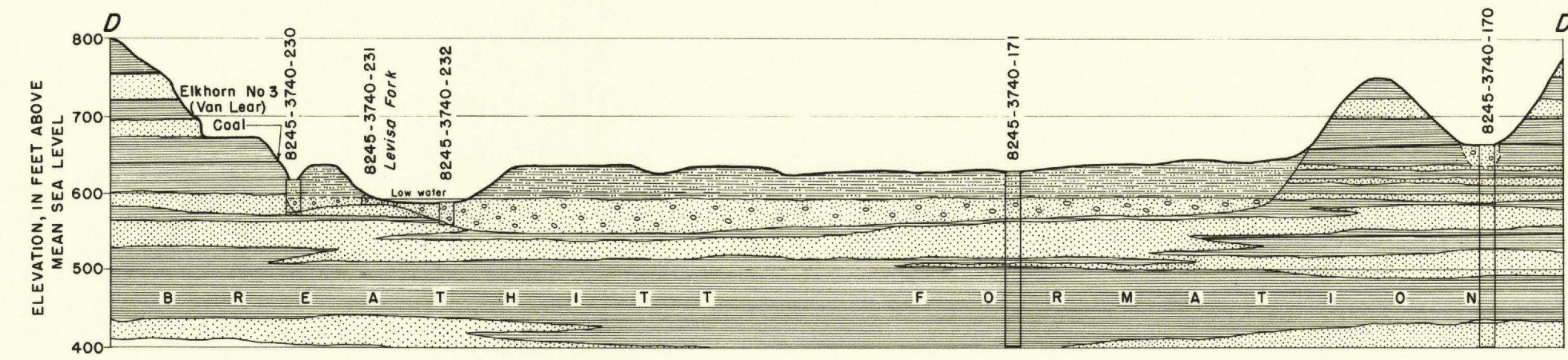
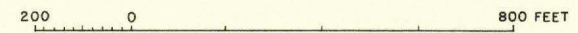
SECTION AA' FROM BONANZA EAST TO MAY BRANCH



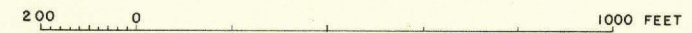
SECTION BB' ACROSS LEVISA FORK AT AUXIER



SECTION CC' PARALLEL TO LEVISA FORK AT AUXIER



SECTION DD' ACROSS LEVISA FORK NEAR PRESTONSBURG



EXPLANATION

- Sand, some gravel
- Sandstone
- Shale
- Silt and clay
- Coal
- Limestone

GENERALIZED GEOLOGIC SECTIONS OF THE PRESTONBURG QUADRANGLE, KENTUCKY