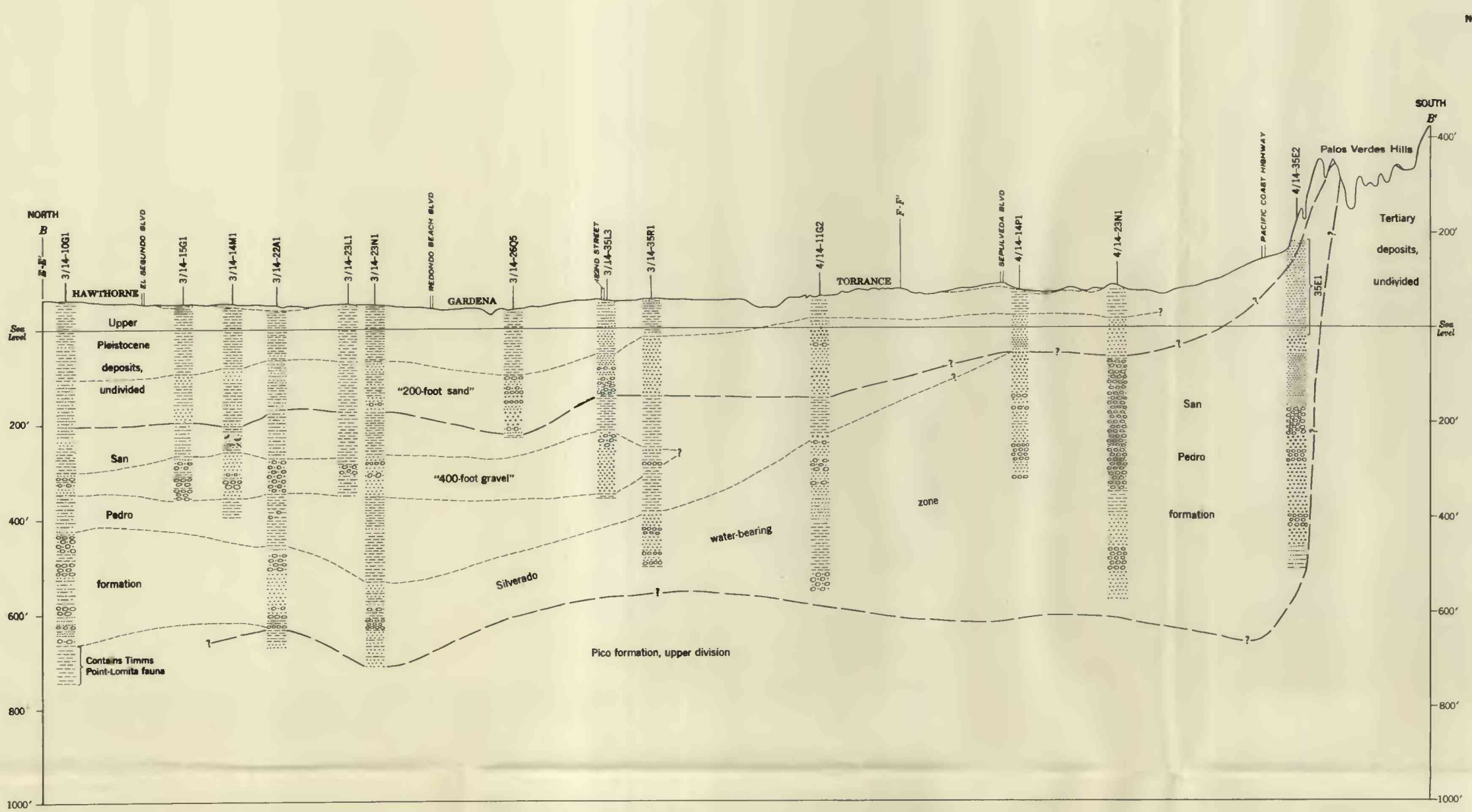
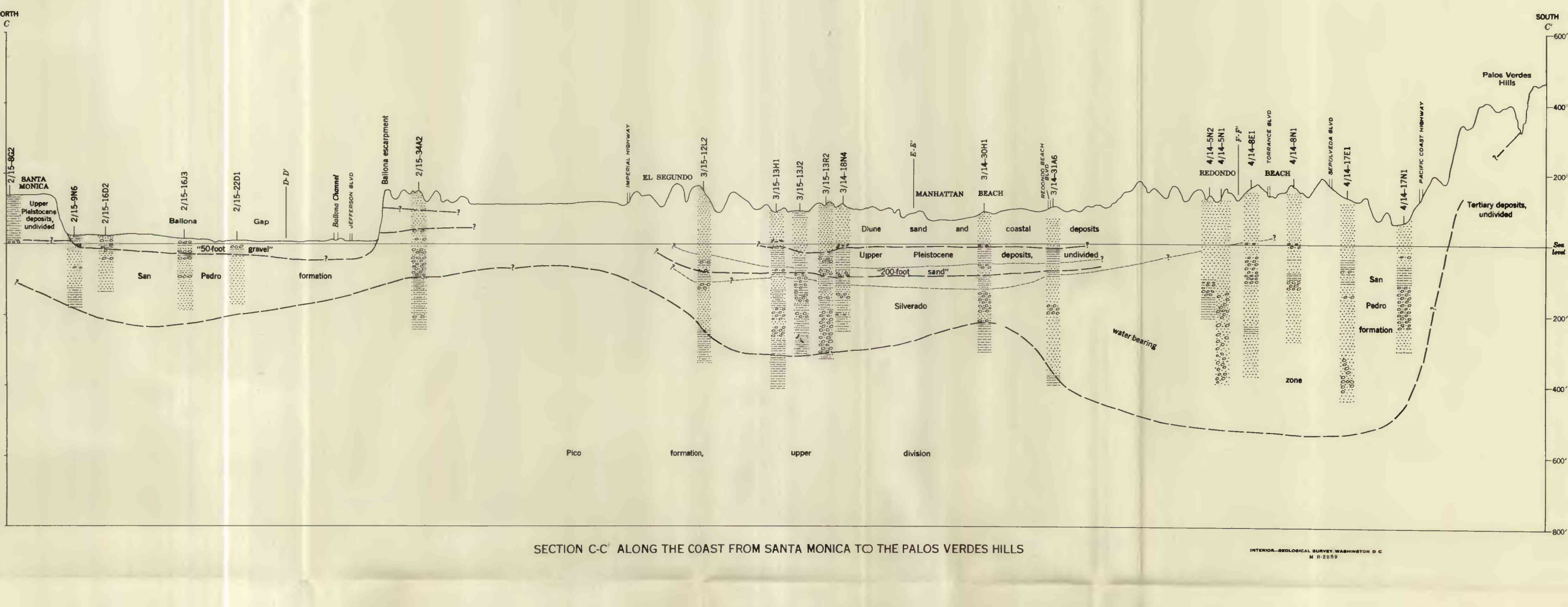


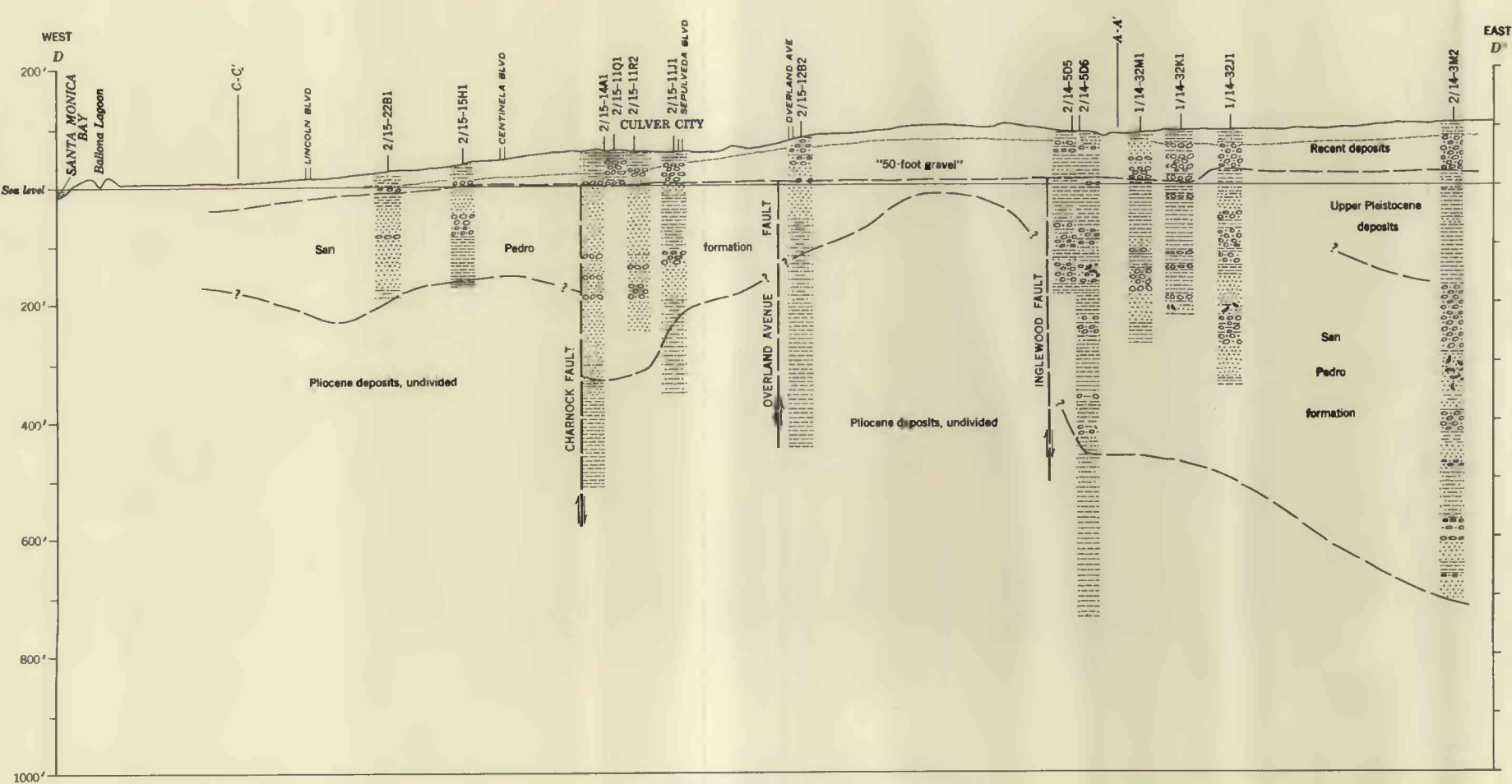
SECTION A-A ALONG THE NEWPORT-INGLEWOOD UPLIFT FROM BEVERLY HILLS TO LONG BEACH



SECTION B-B FROM HAWTHORNE TO THE PALOS



SECTION C-C ALONG THE COAST FROM SANTA MONICA TO THE PALOS VERDES HILLS



SECTION D-D THROUGH BALLONA GAP

GEOLOGIC SECTIONS OF THE TORRANCE-SANTA MONICA AREA, CALIFORNIA

