

EXPLANATION

Water-level in shallow observation wells:

○ January 20-22, 1942

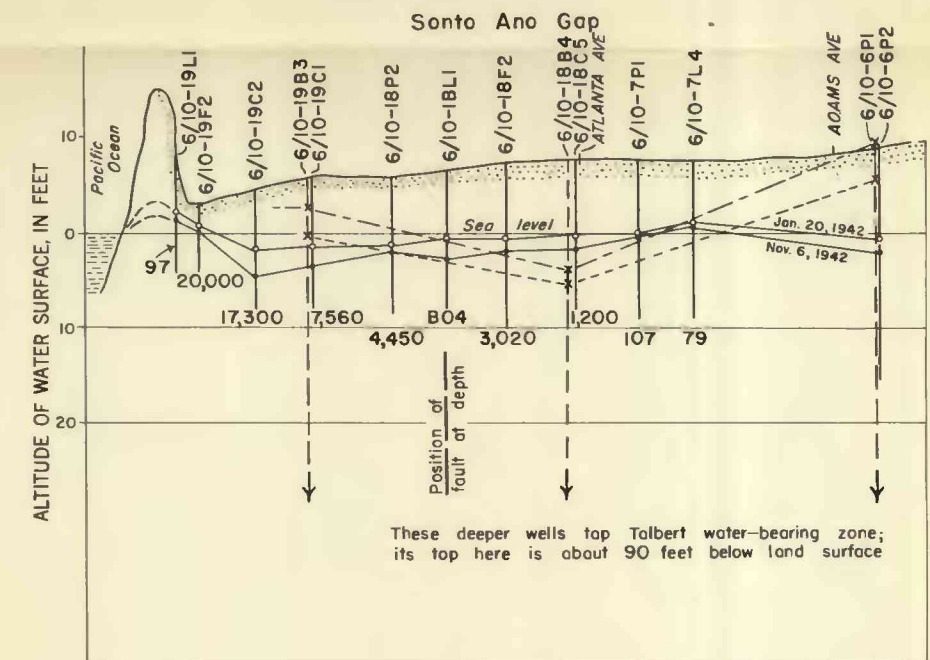
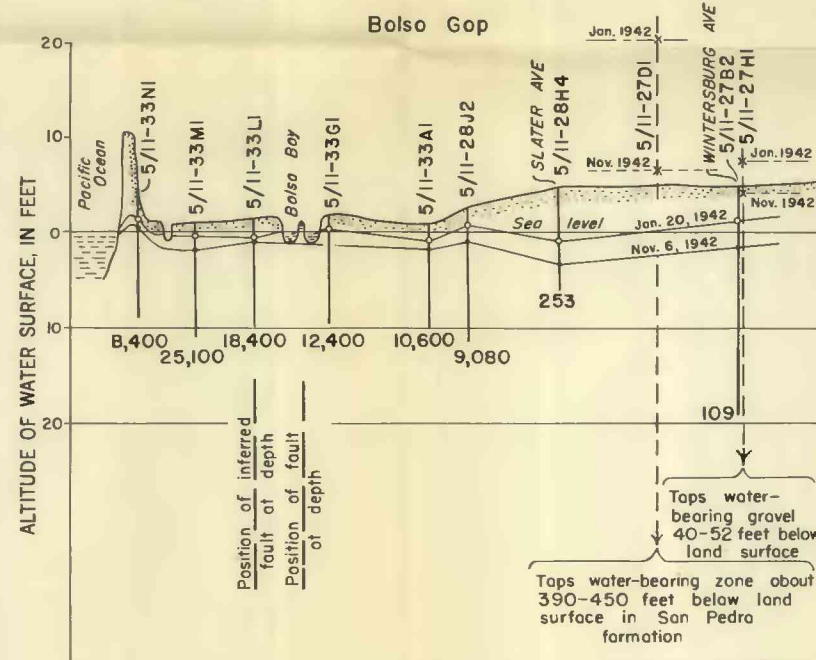
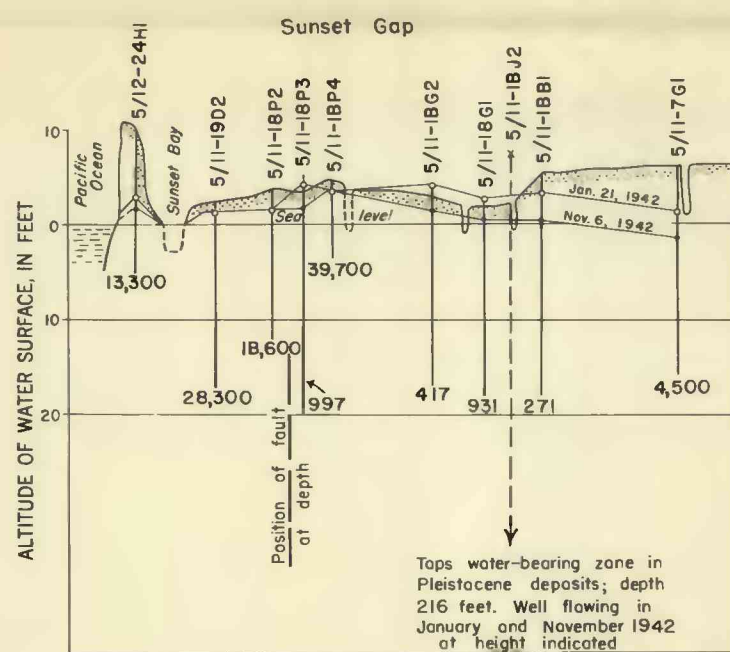
● November 6, 1942

Water-level in deep observation wells:

○ January 1942

● November 1942

Note: Numerals below symbols for shallow wells indicate chloride content in parts per million as of mid-summer 1942



5000 0 10,000 Feet

PROFILES THROUGH THE FIVE GAPS OF THE COASTAL ZONE SHOWING WATER LEVELS IN WELLS TAPPING THE SEMIPERCHED WATER; ALSO PRESSURE LEVELS IN SELECTED DEEPER WELLS