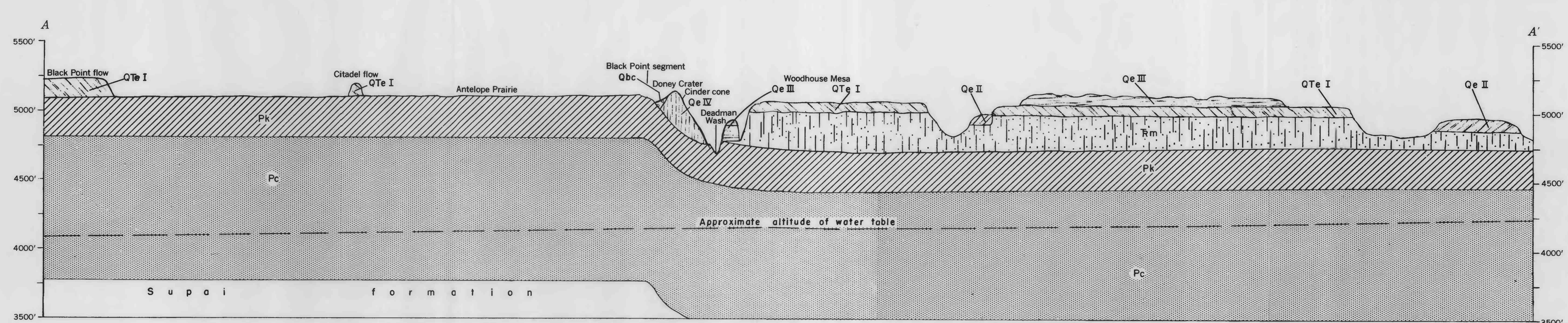
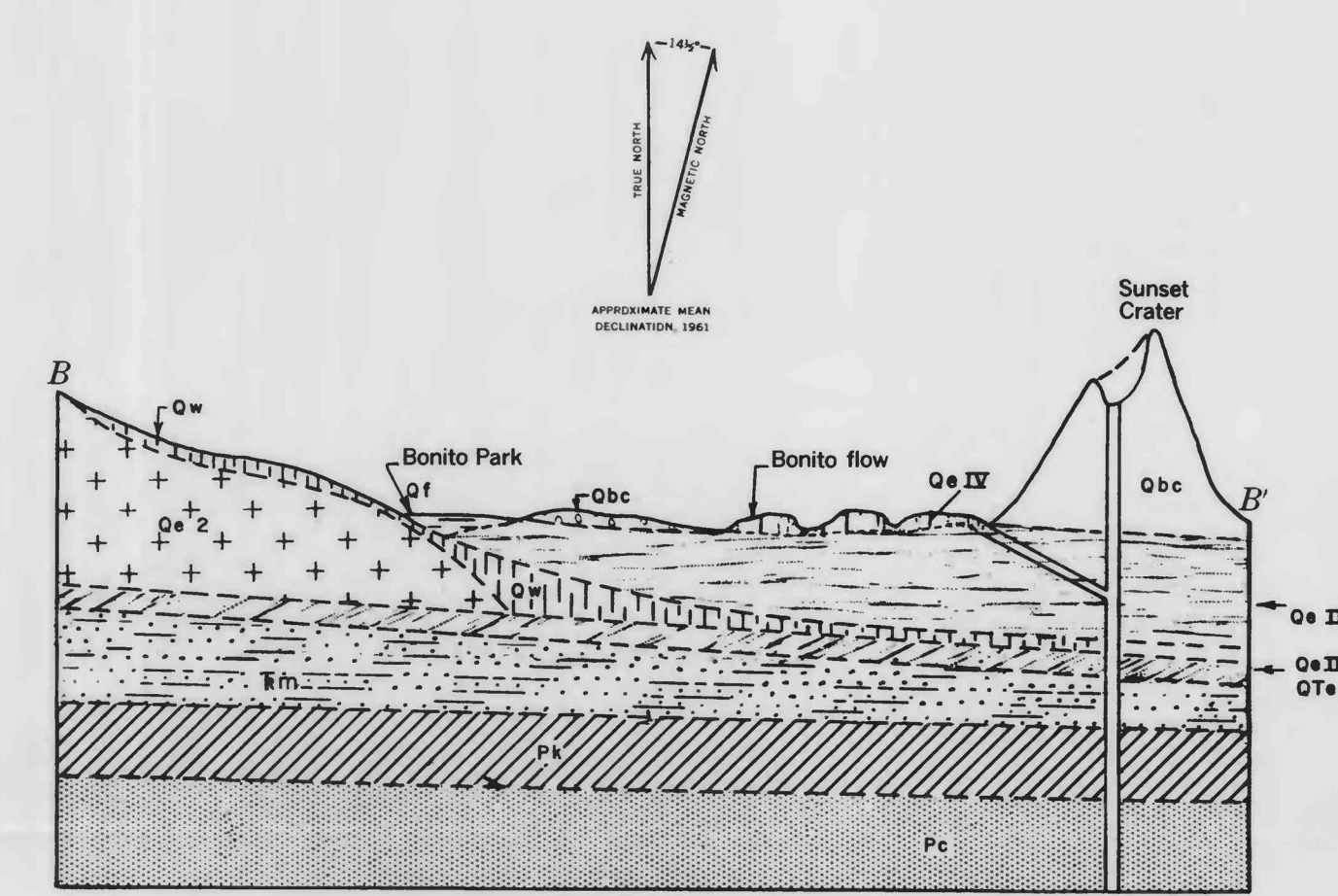
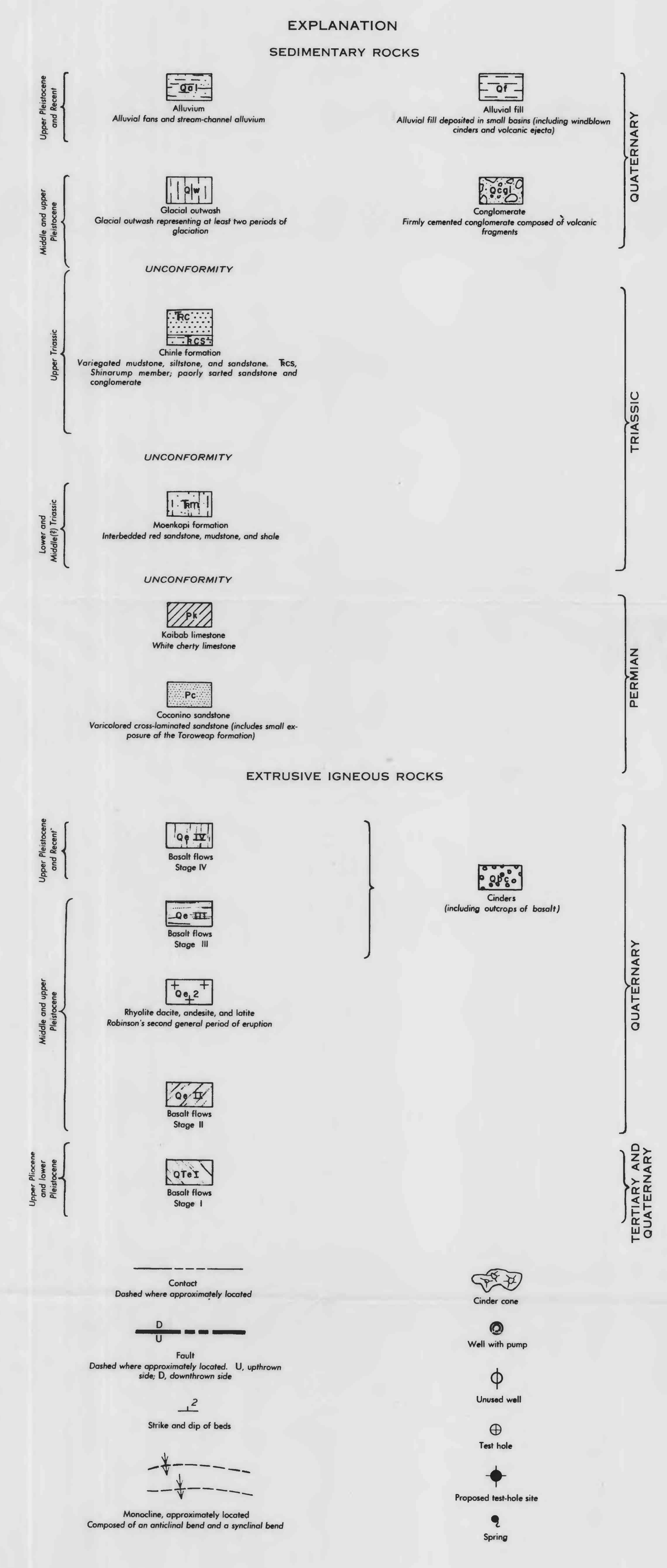




Base from National Park Service map of Wupatki-Sunset Crater National Monument, July 1954 and Soil Conservation Service and U. S. Forest Service aerial photographs

Geology by O. J. Cooley, modified from geologic maps of D. L. Batenroth and A. N. Strahler (1945); O. E. Childs (1948); J. H. Felt (1953); J. H. Irwin and R. Stevens (1955); and H. H. Robinson (1913)



MAP OF WUPATKI-SUNSET CRATER AREA, COCONINO COUNTY, ARIZONA, SHOWING GEOLOGY AND LOCATION OF WELLS AND SPRINGS

