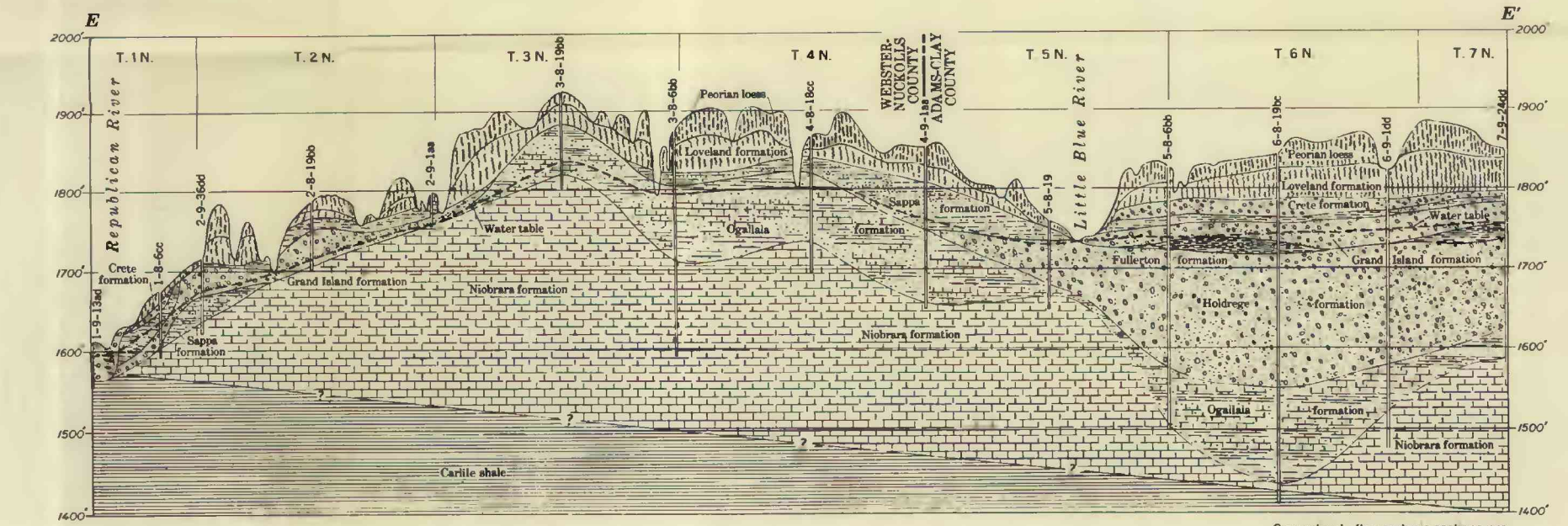
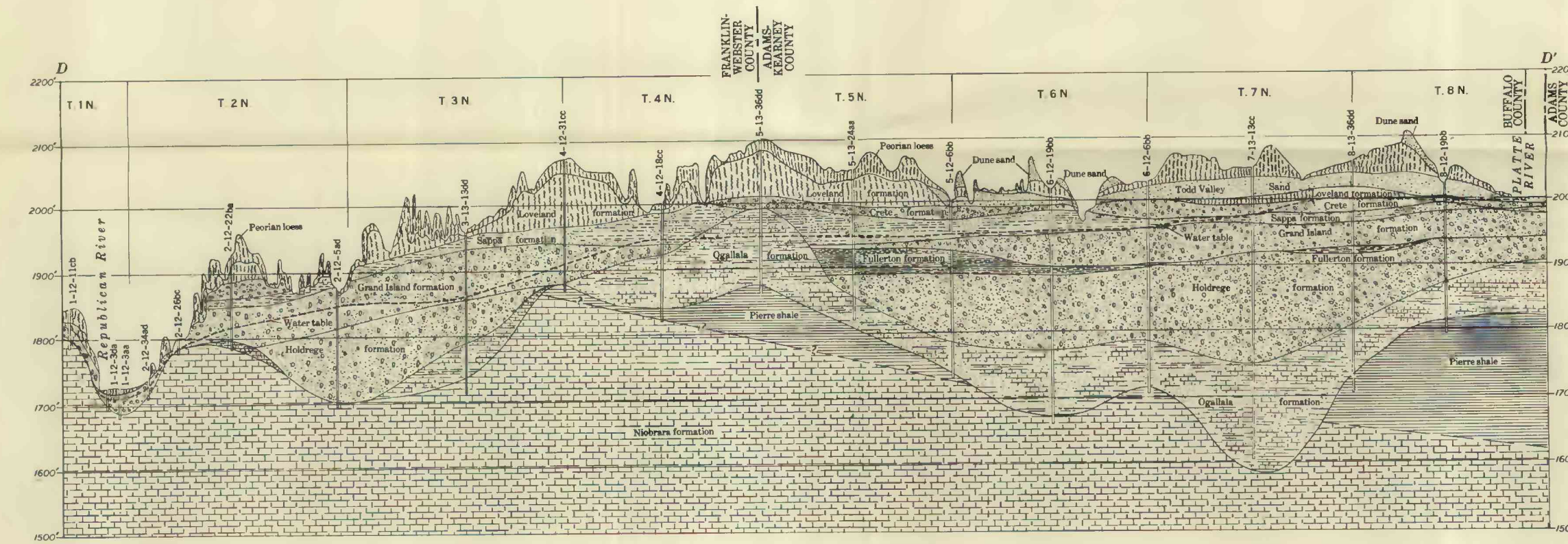
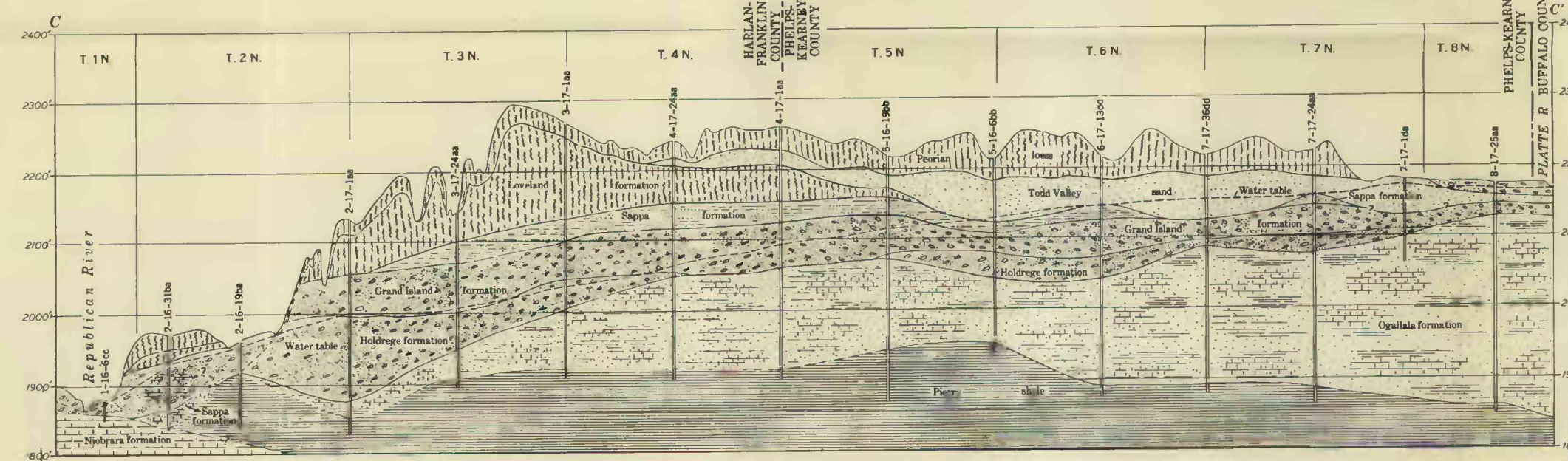
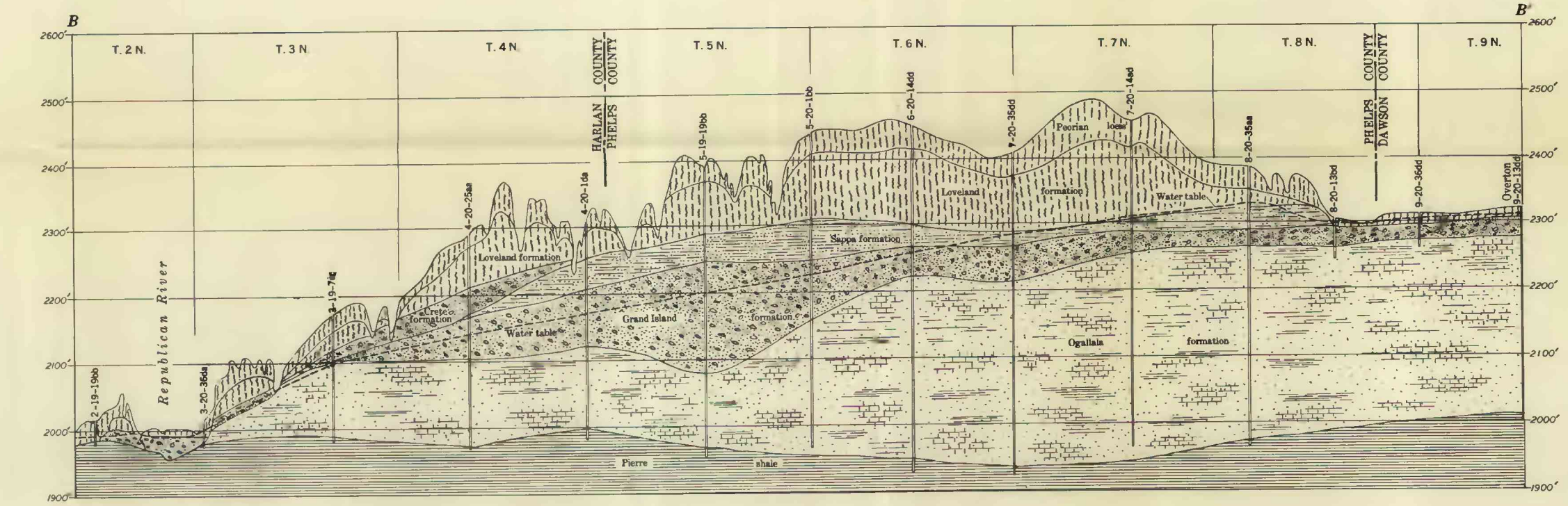
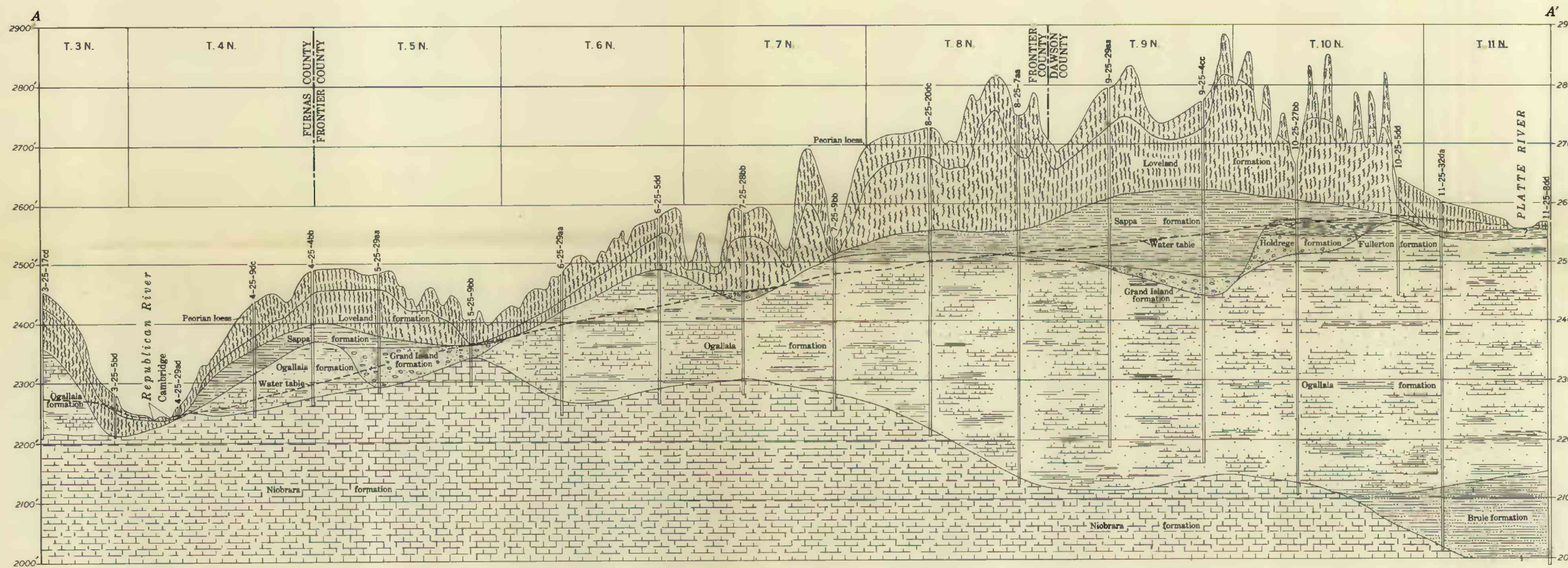
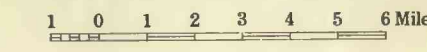


SOUTH



GEOLOGIC SECTIONS FROM THE PLATTE RIVER TO THE REPUBLICAN RIVER, NEBRASKA



Generalized after geologic sections prepared by E. C. Reed and V. H. Dreeszen and based on cooperative test drilling investigations by the Conservation and Survey Division of the University of Nebraska and the U. S. Geological Survey