

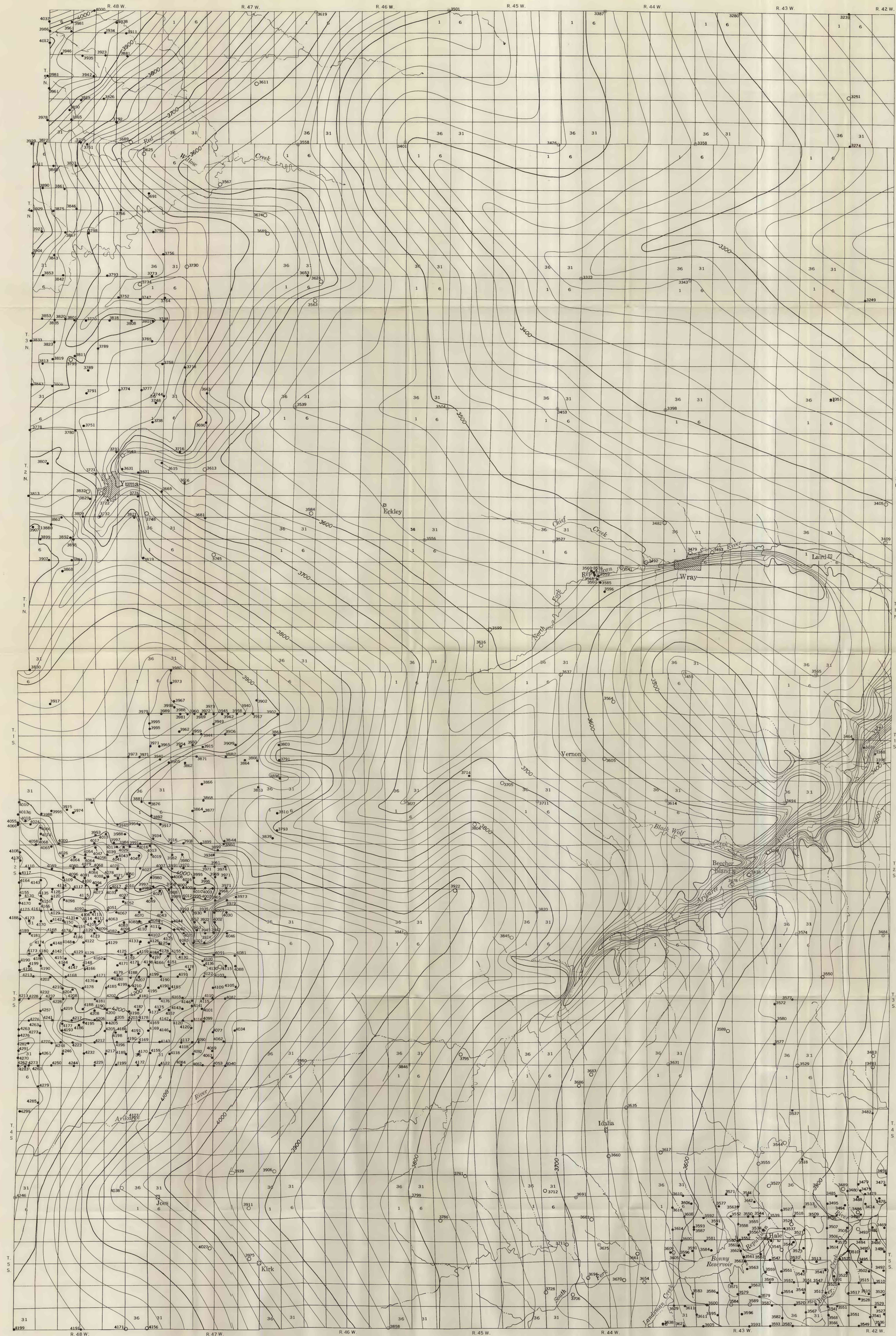
EXPLANATION

○ 3558  
Well

● 4001  
Test hole drilled for this study

● 3454  
Other test hole or seismograph shot-hole  
Number at hole refers to altitude, in feet,  
of the bedrock surface at the well

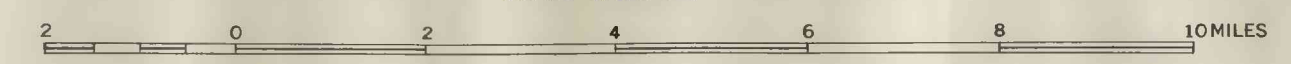
— 4000 —  
Contour line on the bedrock surface  
Altitude in feet above mean sea level.  
Contour interval 50 feet



Base by U.S. Geological Survey. Revised 1930

MAP OF YUMA COUNTY, COLORADO, SHOWING CONTOURS ON THE BEDROCK SURFACE

SCALE 1:125,000



INTERIOR—GEOLOGICAL SURVEY, WASHINGTON, D. C.—W6111

Contours by William G. Weist, Jr.