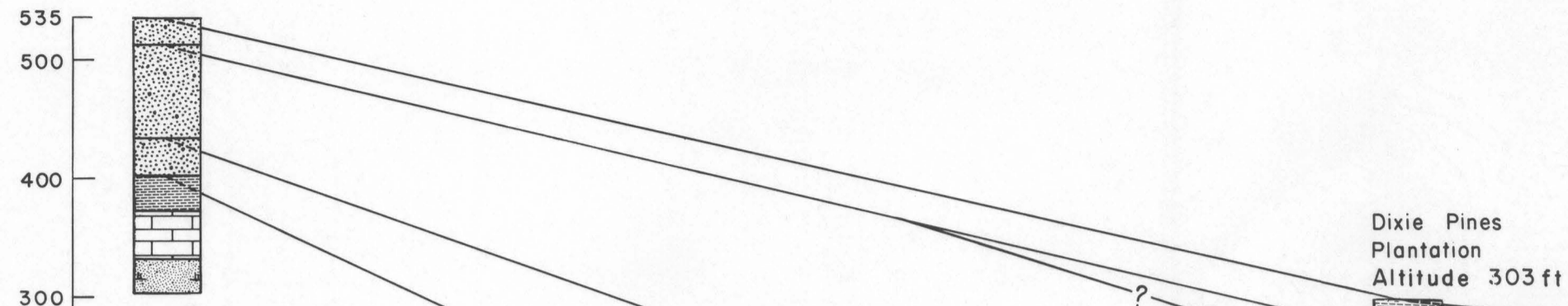


**B**

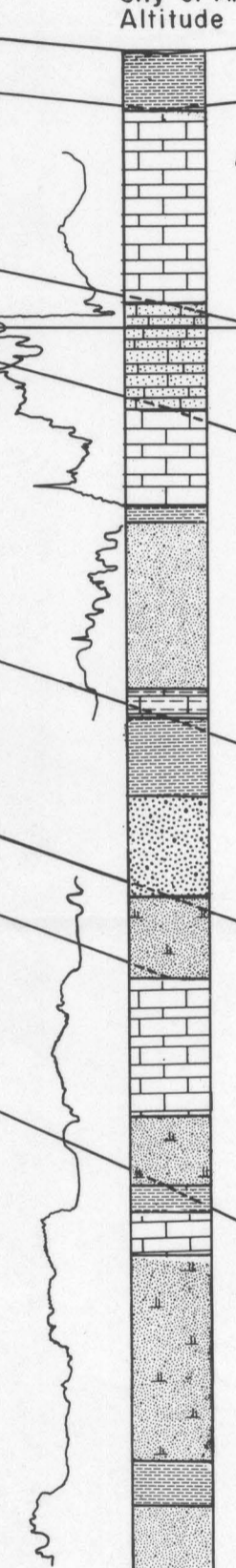
Webster County  
School  
Altitude 535 ft



Dixie Pines  
Plantation  
Altitude 303 ft

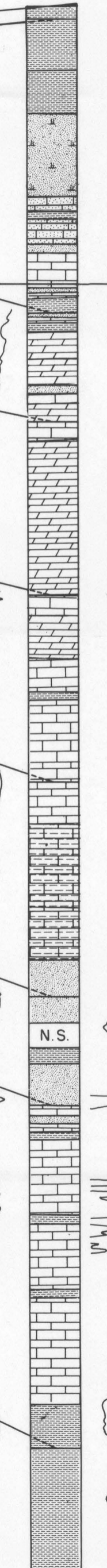


City of Albany 13  
Altitude 200 ft



**B'**

Stanolind Oil and Gas Co.  
J. H. Pullen 1  
Altitude 338 ft

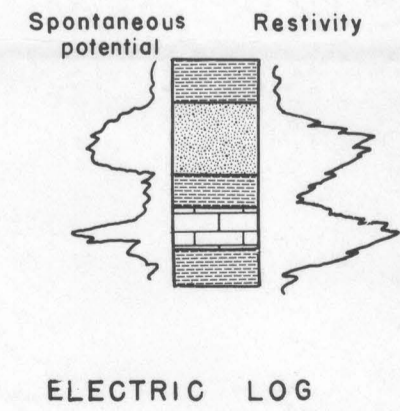
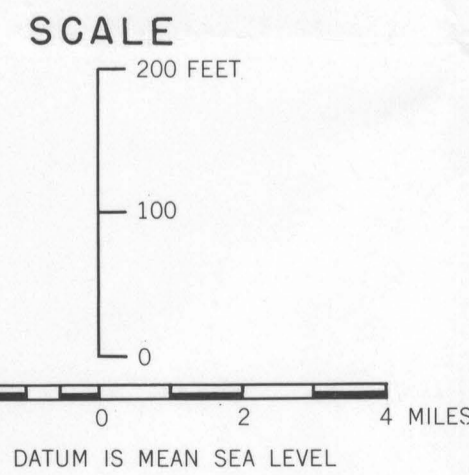


Sea level

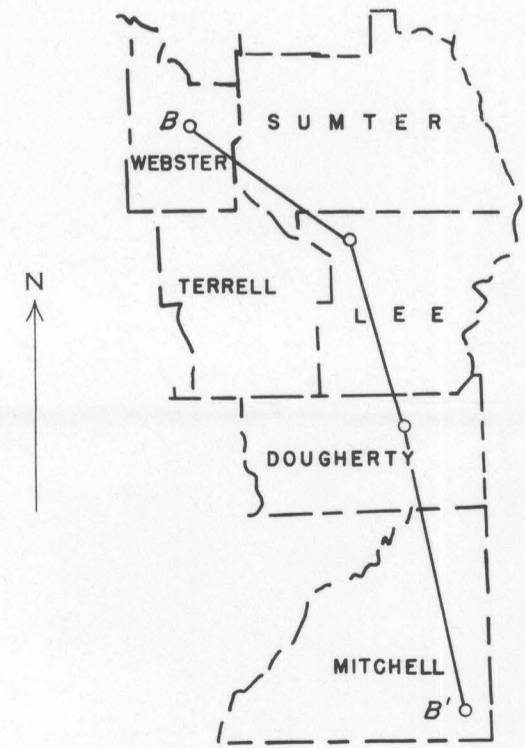
Sea level

**EXPLANATION**

- |  |                     |  |                         |
|--|---------------------|--|-------------------------|
|  | Limestone           |  | Glauconite              |
|  | Dolomitic limestone |  | Macrofossils (abundant) |
|  | Sandy limestone     |  | Microfossils (abundant) |
|  | Silty limestone     |  | Chert                   |
|  | Coarse sand         |  | Feldspar                |
|  | Fine to medium sand |  | NS. No sample           |
|  | Calcareous sand     |  |                         |
|  | Silt or clay        |  |                         |



ELECTRIC LOG



LOCATION OF SECTION

Residuum

Miocene undifferentiated

Flint River formation

Ocala limestone

Lisbon formation

Tallahatta formation

Tusahoma sand

Midway group

Upper Cretaceous series undifferentiated

Upper unit of Clayton formation  
Limestone unit and lower unit of Clayton formation

**STRUCTURE SECTION, WEBSTER COUNTY TO MITCHELL COUNTY, GEORGIA**