



EXPLANATION

SEDIMENTARY ROCKS

- Qal**
Alluvium
Some colluvium and glacial outwash deposits
Sand, silt, clay, and gravel
- Qtz**
Tertiary deposits
Predominantly limestone gravels, containing
interbedded sand and silt
- Kb**
Bourgois Shale
Dark-gray massive shale
- Kjr**
Judith River Formation
Interbedded sandstone to buff sandstone,
siltstone, and claystone
- Kc**
Claggett Shale
Dark-gray massive shale, several beds contain
large concretions and cone-in-cone structures
- Ks**
Sagehen Sandstone
Thin-bedded gray sandstone and shale;
massive Tertiary sandstone at base, in
western part of reservation
- Kw**
Warm Creek Shale
Gray massive shale, includes Mowbray Sand-
stone Member, a colorless sandstone with
lenses of fossiliferous limestone
- Km**
Mowbray Shale
Very light gray, brittle, siliceous shale, some
red, contains abundant fossil fish scales
- Kt**
Thermopsis Shale
Dark blue-gray massive shale, contains layers
of small brown ferruginous concretions
- Kx**
Kootenai Formation and Ellis Group
The Kootenai is a resistant, coarse-grained,
buff to gray sandstone. The Ellis is com-
posed of gray shales, gray argillaceous
conglomerates to lower bed.
- Ls**
Limestone and sandstone
Includes Madison Group of Mississippian age,
Jefferson Limestone of Late Devonian age,
English Limestone of Late Devonian age,
Flathead Sandstone of Middle Cambrian
and other rocks of Cambrian age

IGNEOUS ROCKS

- Tsp**
Syenite porphyry

METAMORPHIC ROCKS

- pc**
Biotite and hornblende schists and gneisses

Geologic contact
Dashed where inferred

Fault
Dashed where inferred,
L, upthrown side; D,
downthrown side

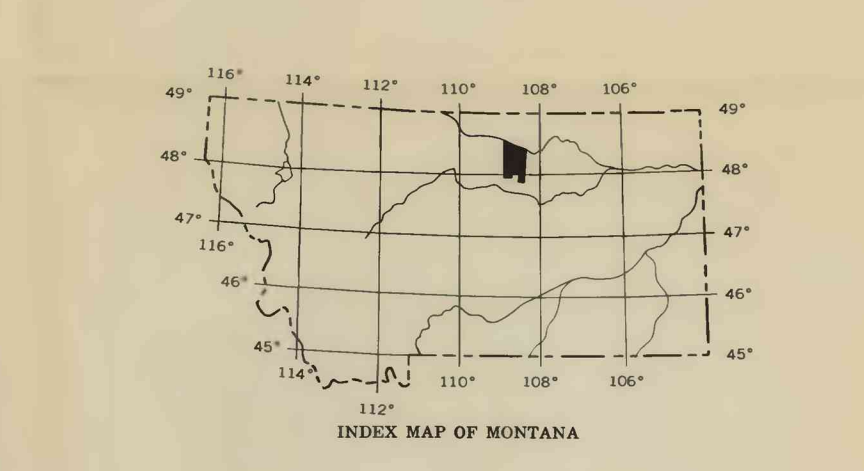
Thrust fault
Smooth on upper plate

**Approximate altitude
of beds**

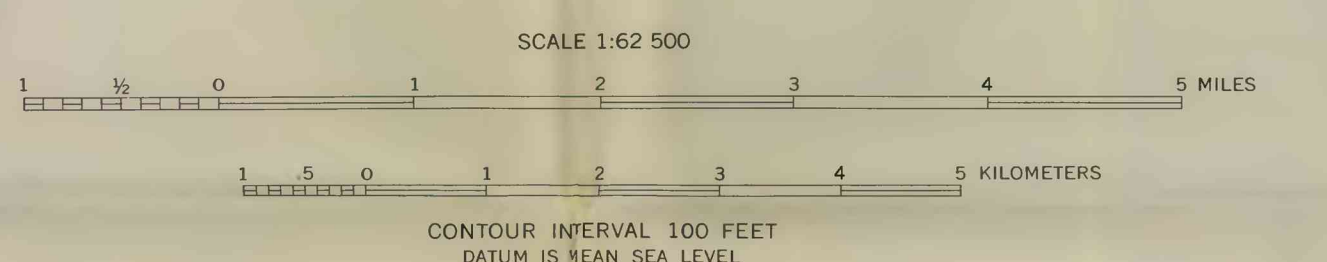
**Glacial melt-water
channel**

**Southern limit of
ground moraine**

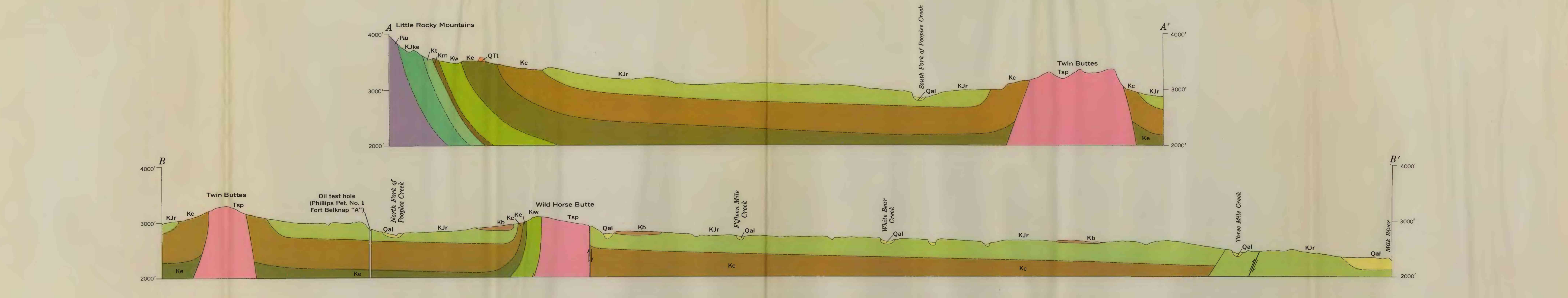
- Water well
- Oil test
- Spring
- Surface-water gaging
station
- Stock-water dam



Base map adapted from topographic map furnished
by Bureau of Indian Affairs, 1936



INTERIOR GEOLOGICAL SURVEY, WASHINGTON, D. C. 20548
Bedrock geology mapped by H. M. Knobel, 1940, 1944
Geologic geology mapped by C. C. Amerson, 1950



GEOLOGIC MAP OF THE FORT BELKNAP INDIAN RESERVATION, MONTANA