

LOVING COUNTY
WINKLER COUNTY

Sun Oil Co
J. B. Tubb 1

0.10 inch normal
0.32 inches lateral
0.25 inches vertical

Approximate land surface

Water table

Well C-3

Well C-23

Well C-26

Well D-153

Well D-140

Well D-68

Well D-88

Well D-10

Well E-14

Well E-5

Well B-12

Well B-11

Well B-10

Well B-9

Well B-8

Well B-7

Well B-6

Well B-5

Well B-4

Well B-3

Well B-2

Well B-1

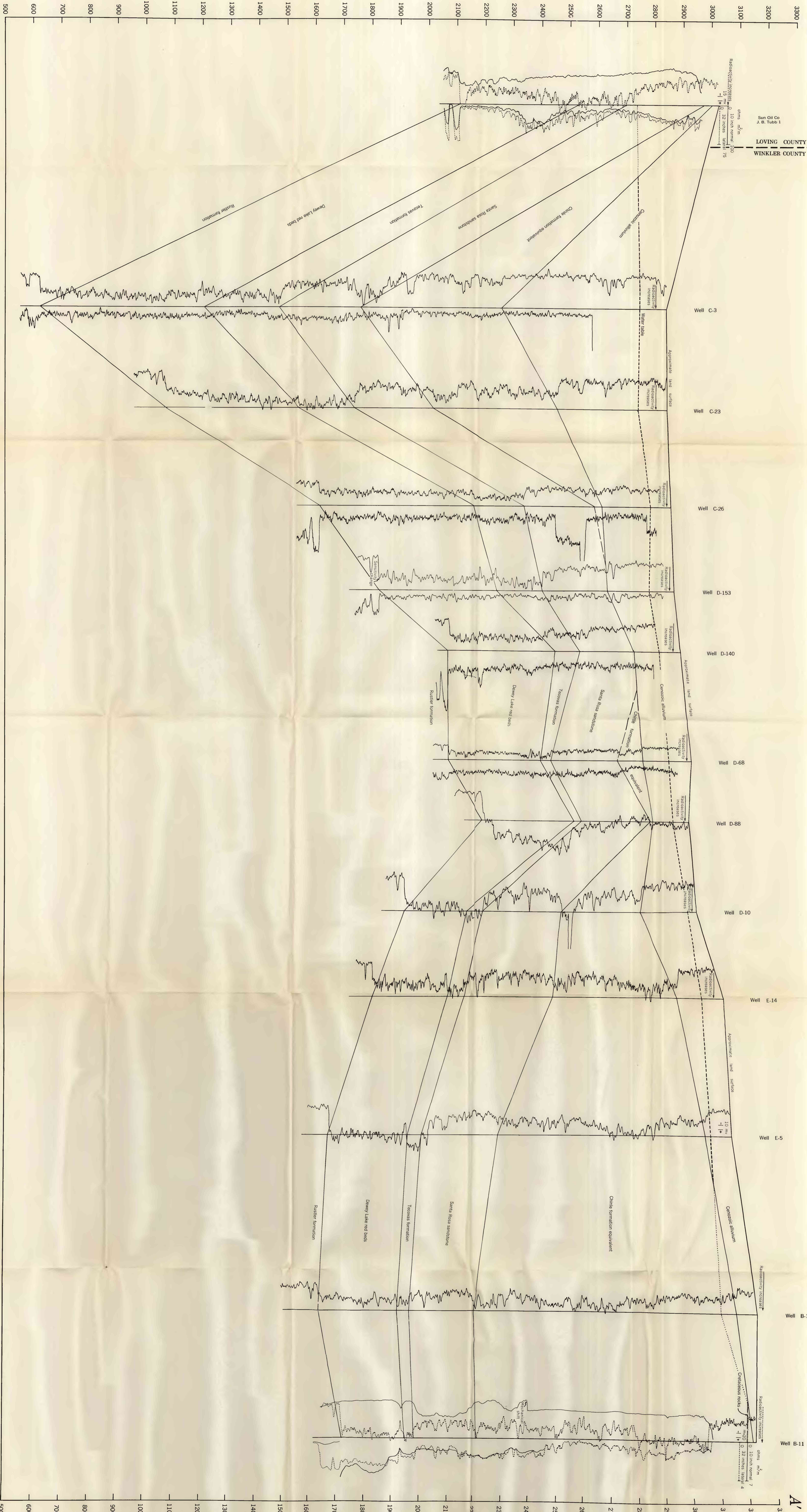
Well B-0

Well B-0

Well B-0

Well B-0

ALTITUDE, IN FEET



GEOLOGIC CROSS SECTION ALONG LINE A-A, WINKLER COUNTY, TEXAS

