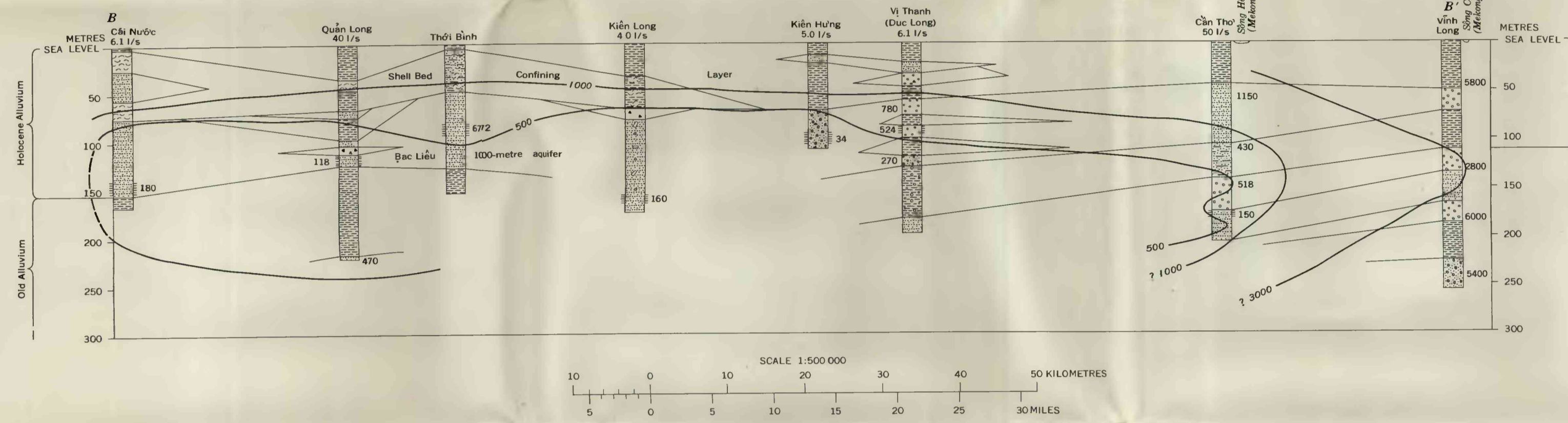


A SECTION ACROSS THE CA MAU PENINSULA
FROM SÔNG ÔNG ĐỐC TO TRƯỜNG KHÁNH
Line of section shown on plate 2. Vertical exaggeration X125

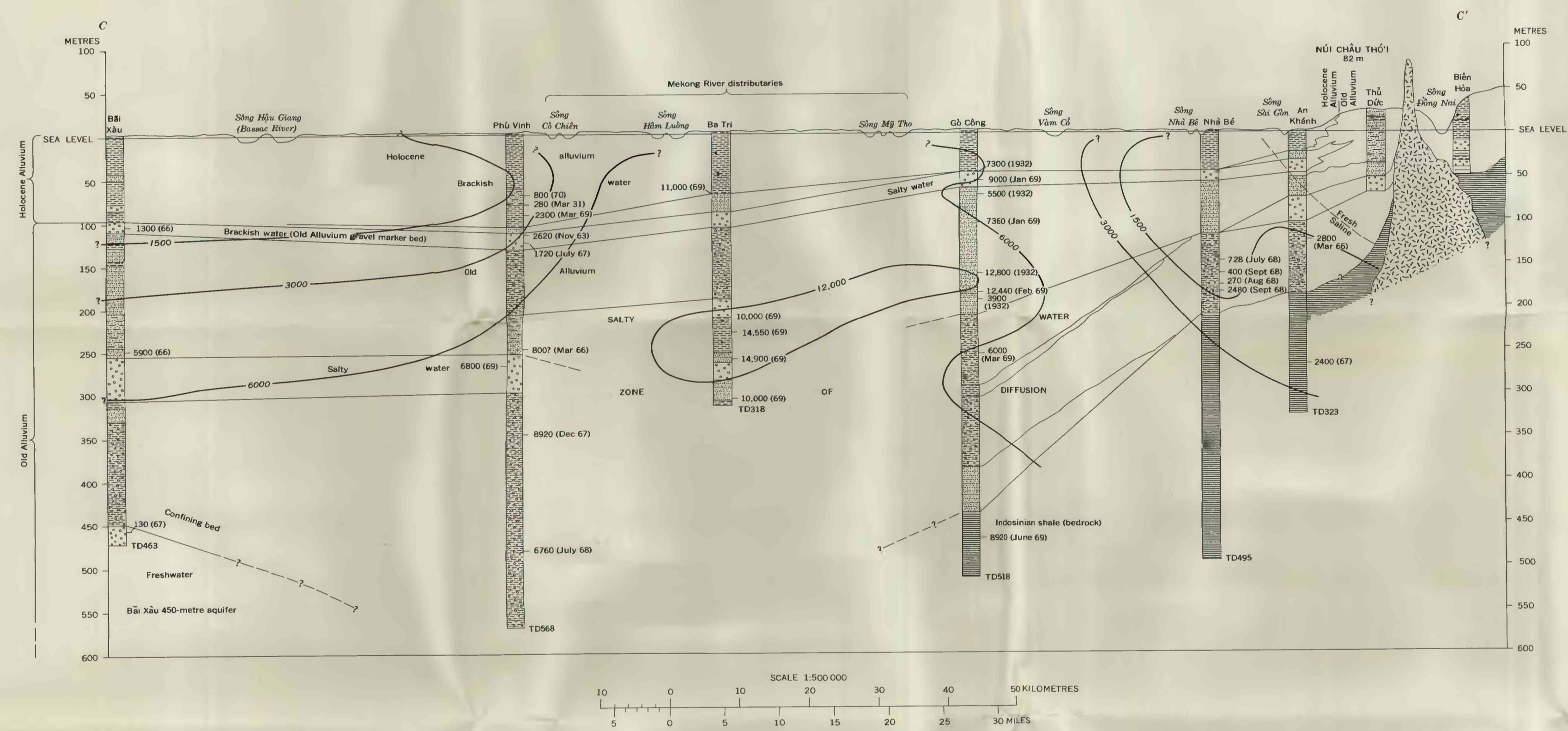
EXPLANATION

- Sand
- Sand and clay
- Gravel
- Clay and gravel
- Clay or silt
- Clay, silt, and shells
- Shale
- Igneous rock
- Shells
- Laterite

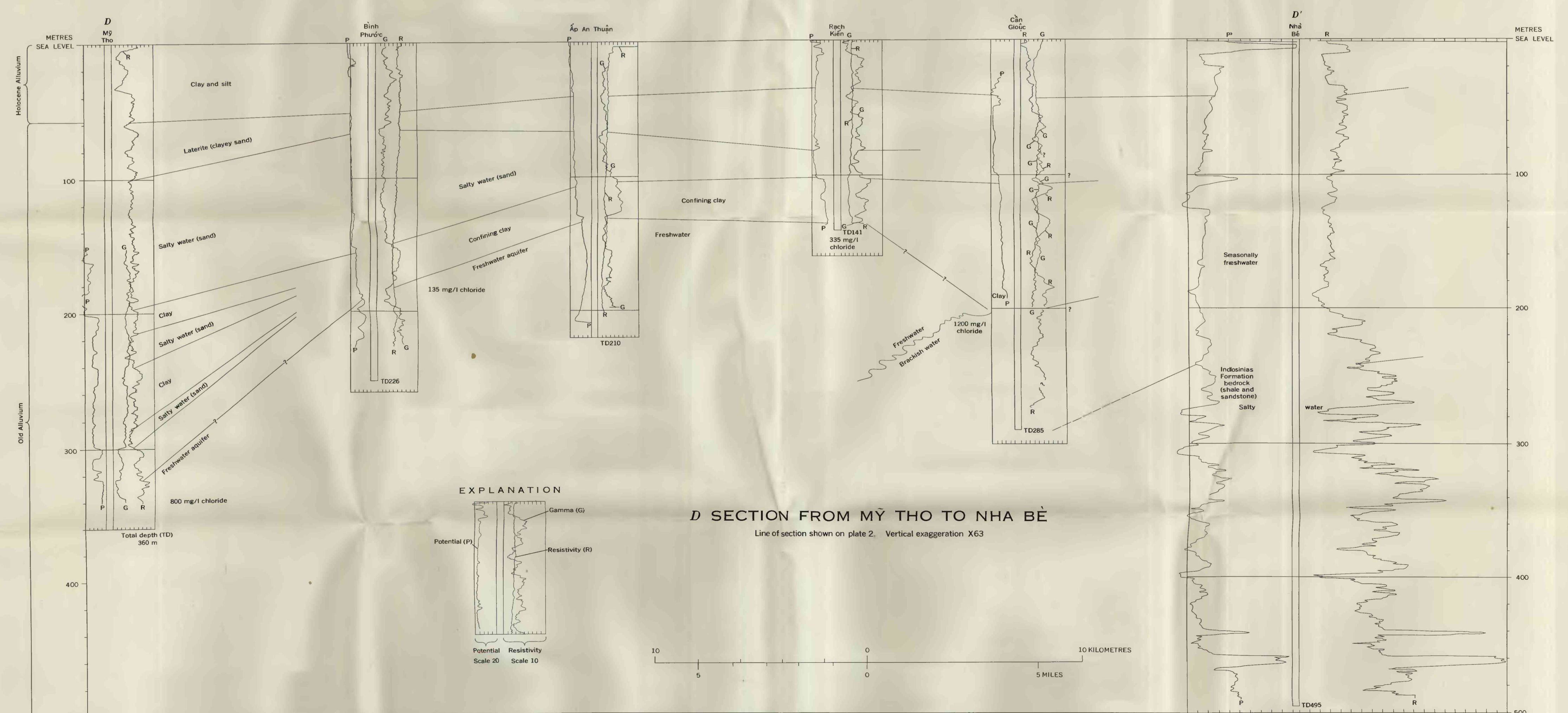
Lithologic contact
 ————
 Inferred line of equal chloride concentration in milligrams per litre (mg/l)
 Queried where uncertain. Intervals as shown
 Cái Nước
 100 l/s
 1300 (66)
 Well screen
 TD 463
 Drilled well or test hole with name showing yield, in litres per second (l/s)
 1300 (66); chloride (Cl) content, in mg/l with month and year (June 1966) of test.
 TD 463; total depth, in metres, below land surface



B SECTION FROM CÁI NƯỚC TO VINH LONG
Line of section shown on plate 2. Vertical exaggeration X125



C SECTION ALONG THE OUTER FRINGE OF THE MEKONG DELTA FROM BÀI XÀU TO BIÊN HÒA
Line of section shown on plate 2. Vertical exaggeration X125



D SECTION FROM MỸ THO TO NHA BÈ
Line of section shown on plate 2. Vertical exaggeration X63

EXPLANATION

- Gamma (G)
- Resistivity (R)
- Potential (P)
- Scale 20
- Scale 10