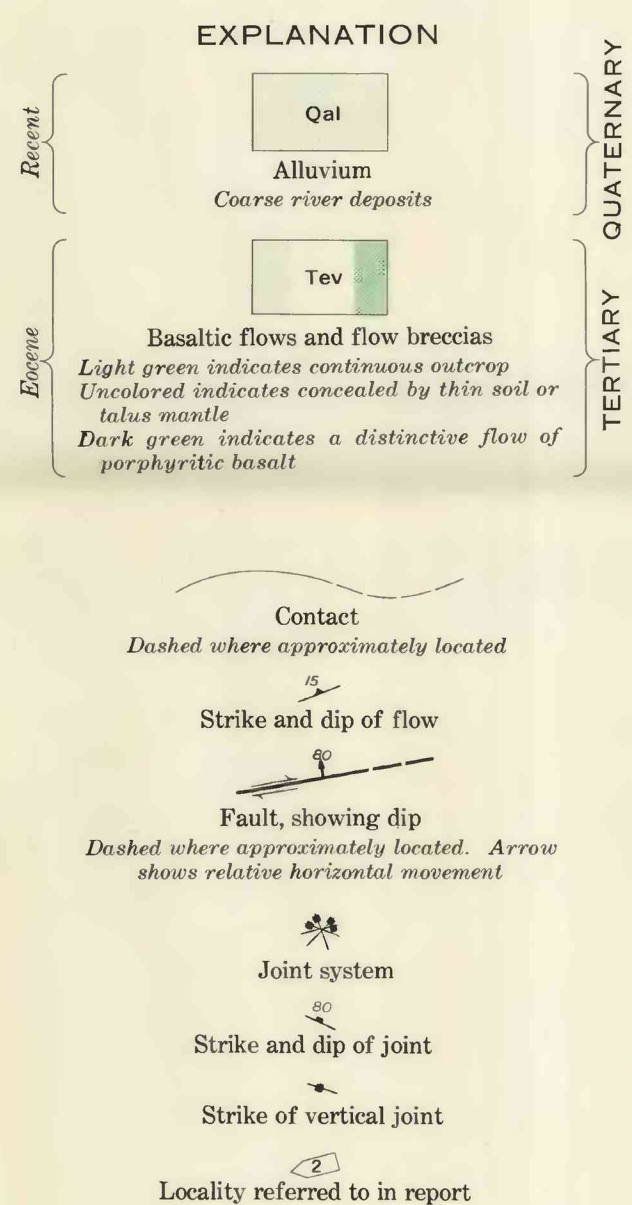
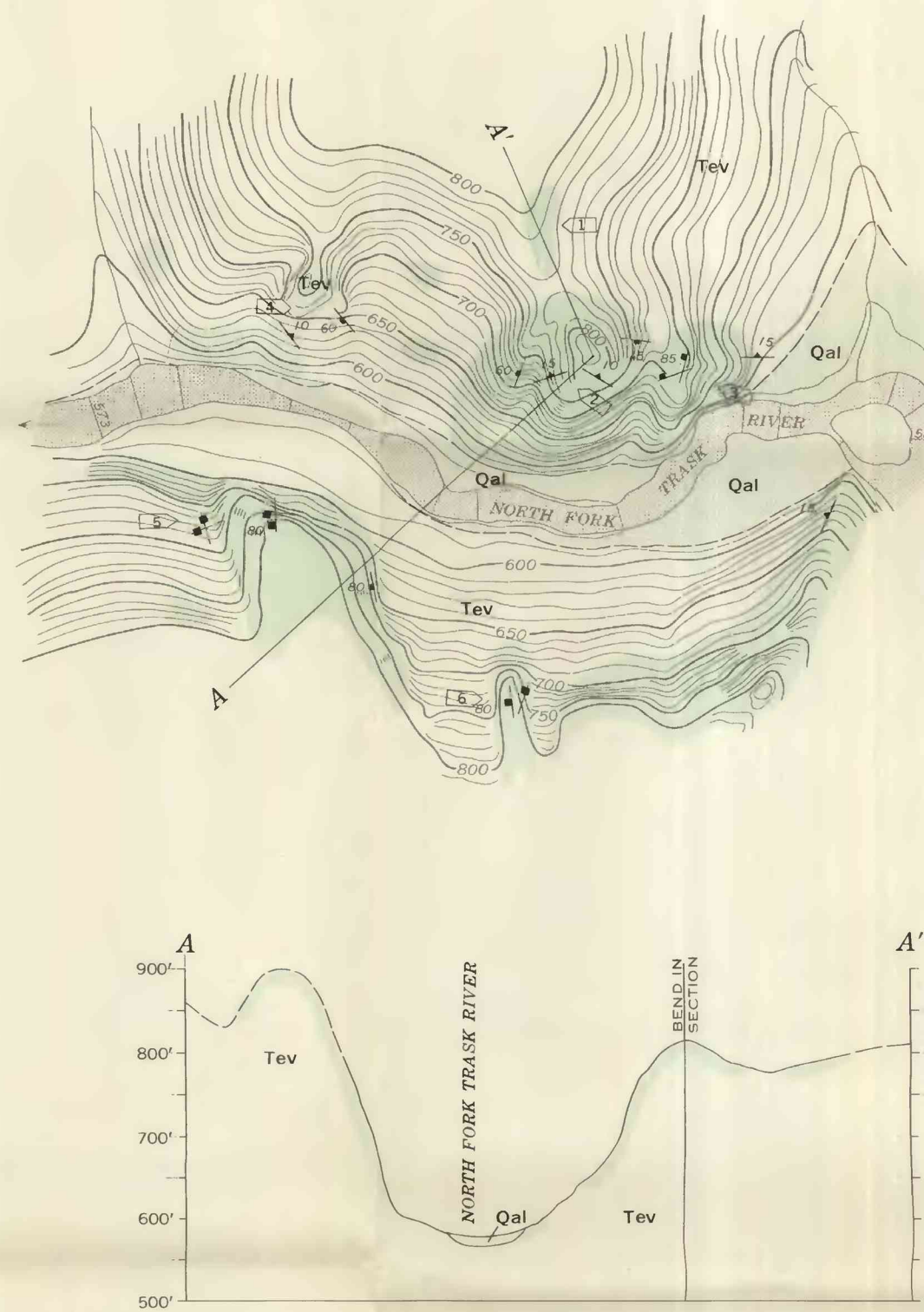


Planetable topography, D. A. Conti, July 1959

**CLEAR CREEK DAMSITE**  
SW 1/4 SEC. 24, T. 1 S., R. 7 W., W. M.

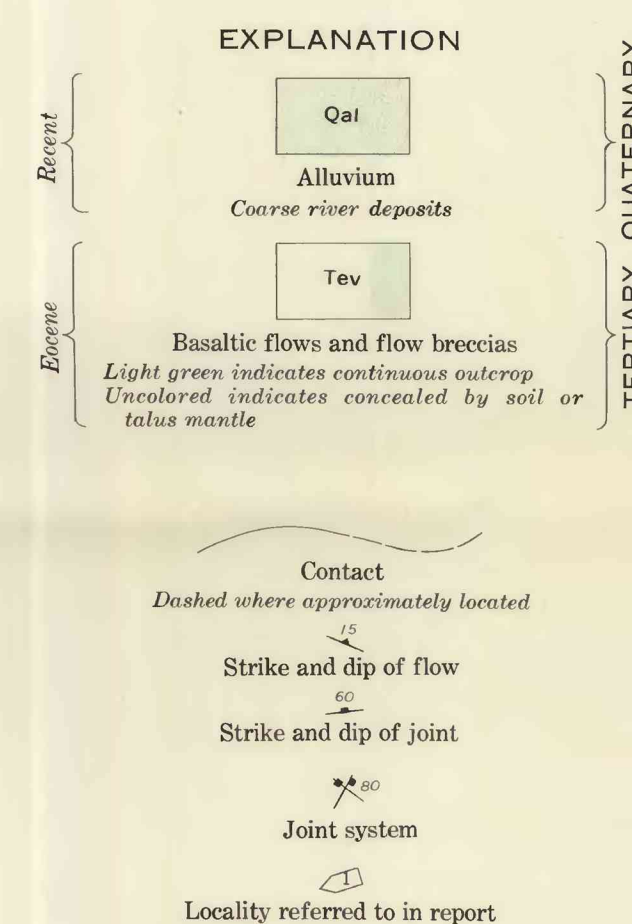


Geology by Russell G. Wayland, November 1959

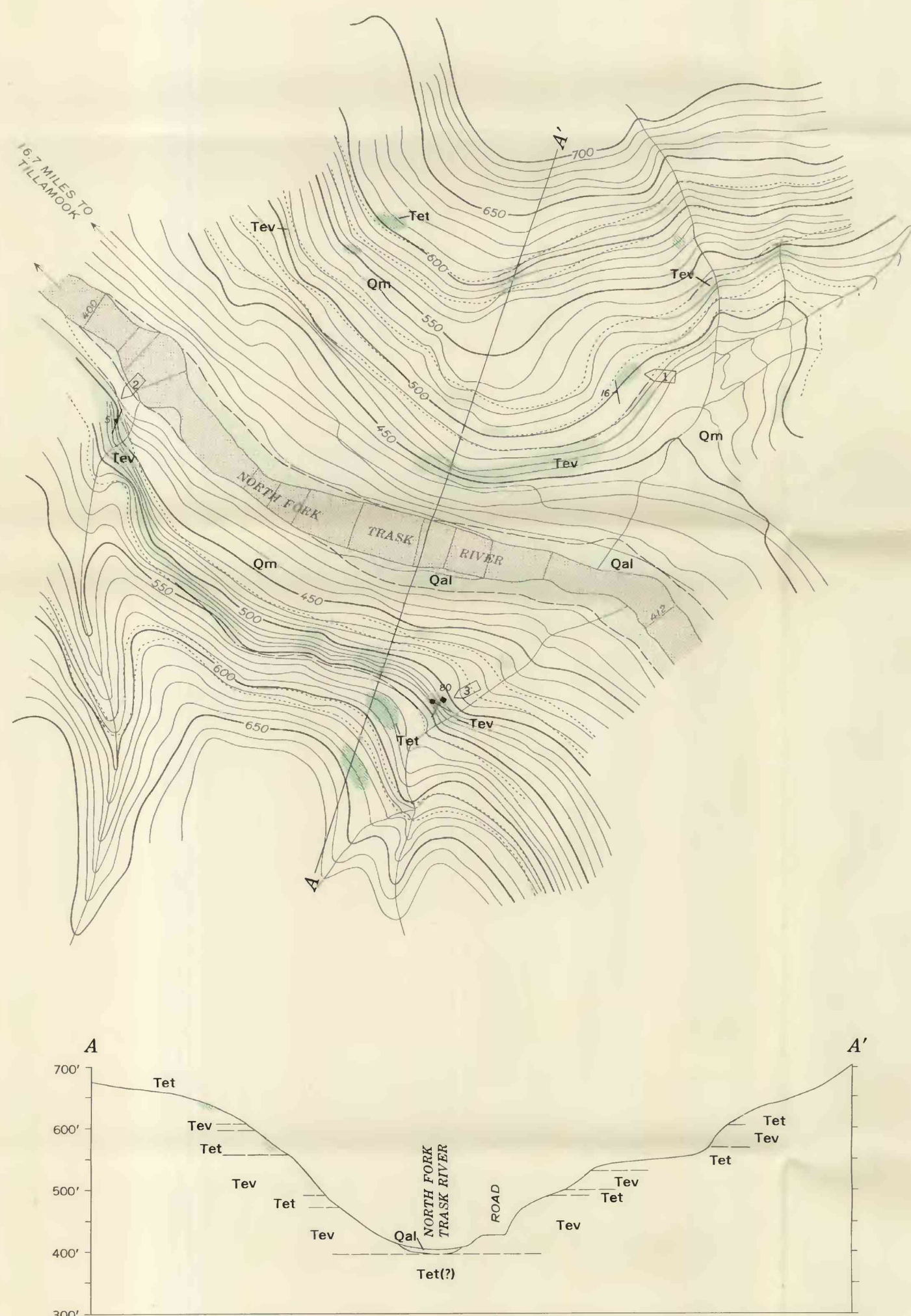


Planetable topography, J. L. Colbert, July 1959

**KEYHOLE DAMSITE**  
NE 1/4 SEC. 27, T. 1 S., R. 7 W., W. M.

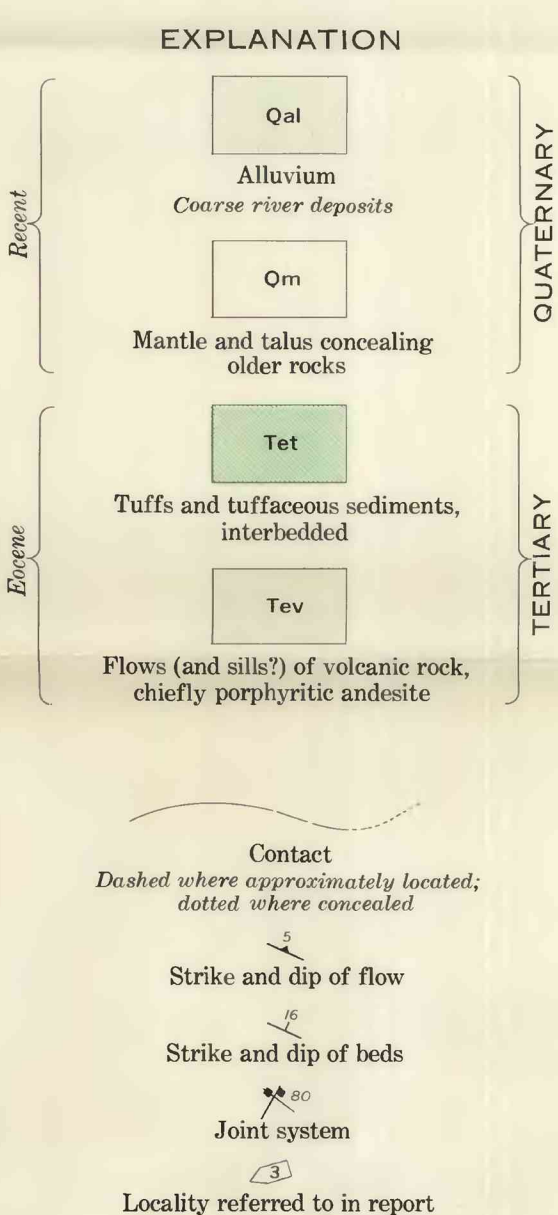


Geology by Russell G. Wayland, November 1959

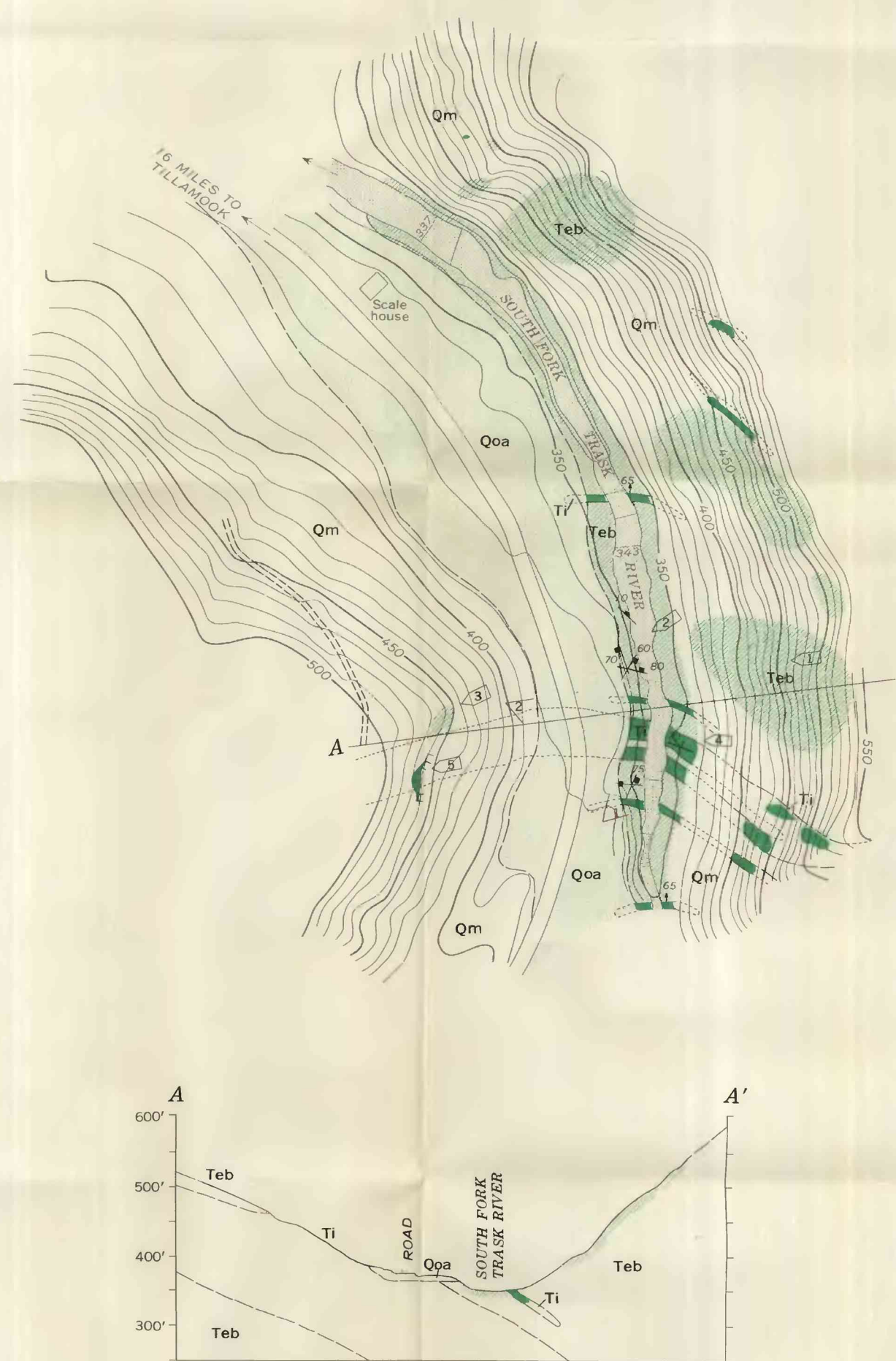


Planetable topography, D. A. Conti, July 1959

**BARK SHANTY DAMSITE**  
N 1/2 SEC. 29, T. 1 S., R. 7 W., W. M.

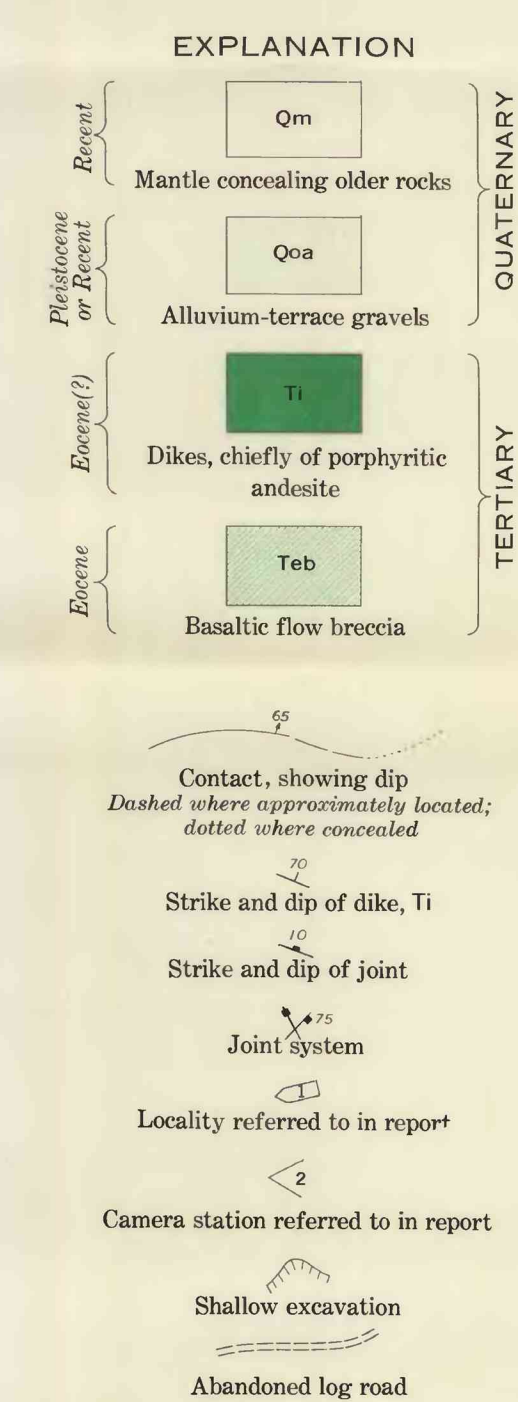


Geology by Russell G. Wayland, November 1959



Planetable topography, J. L. Colbert, July 1959

**HOLLYWOOD DAMSITE**  
SW 1/4 SEC. 6, T. 2 S., R. 7 W., W. M.



Geology by Russell G. Wayland, November 1959

**GEOLOGIC MAPS AND SECTIONS OF DAMSITES, NORTH FORK AND SOUTH FORK TRASK RIVER, OREGON**

INTERIOR—GEOLOGICAL SURVEY, WASHINGTON, D. C.—62032

