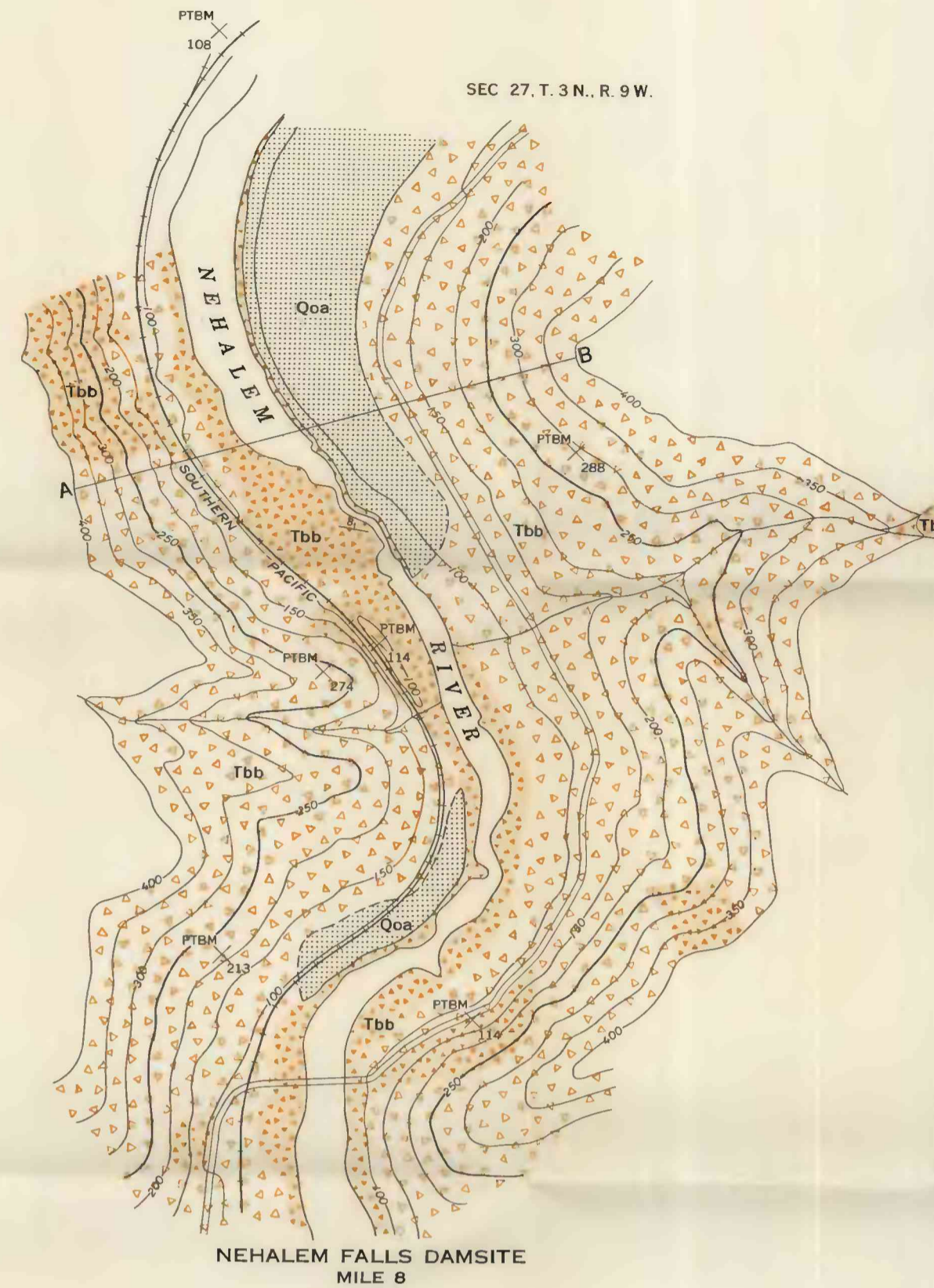
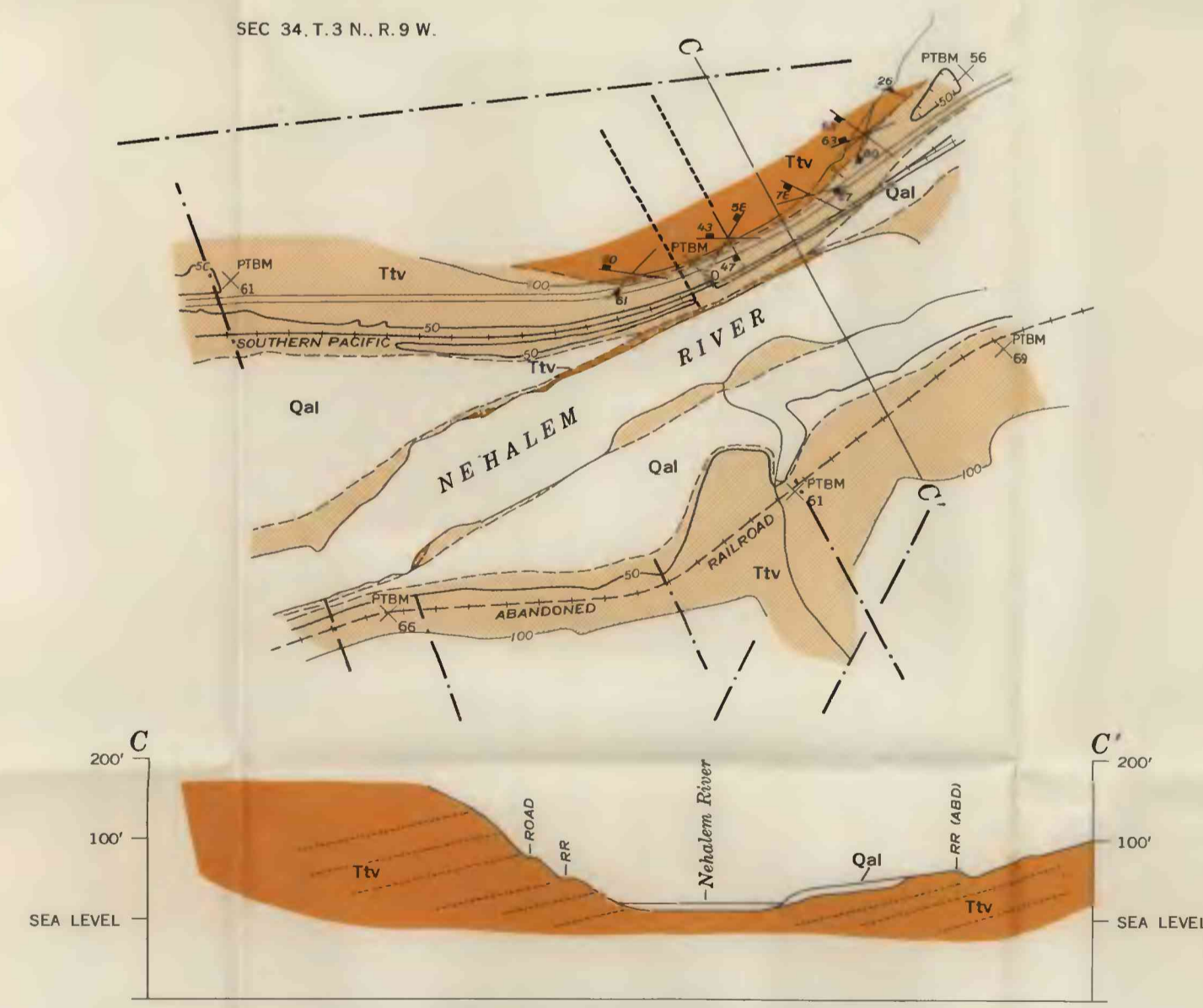


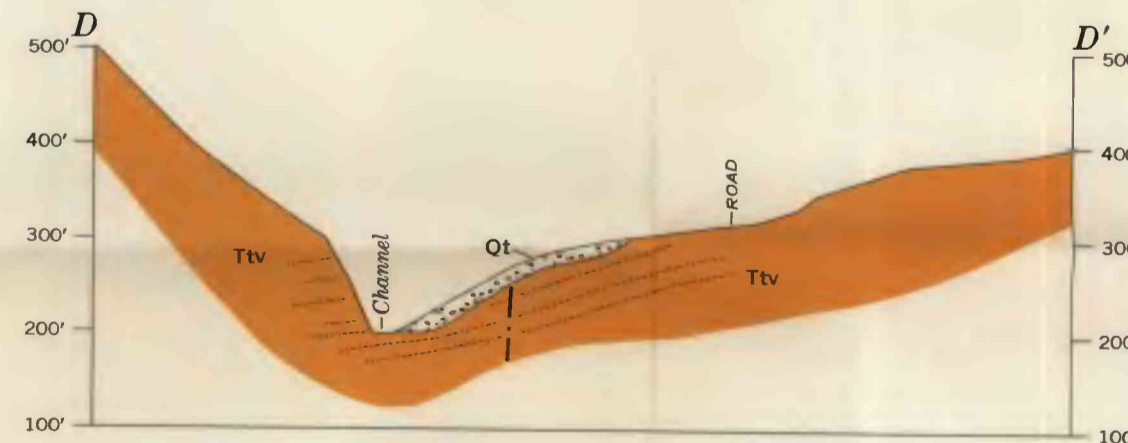
UPPER WAKEFIELD DAMSITE  
SEC 16, T. 3 N., R. 8 W., WM



NEHALEM FALLS DAMSITE  
MILE 8



STONEHILL DAMSITE  
MILE 4.9



SALMONBERRY DAMSITE  
MILE 15.5

EXPLANATION

- |                        |  |   |            |
|------------------------|--|---|------------|
| Pleistocene and Recent |  | Qal   | QUATERNARY |
|                        |  | Alluvium<br><i>Includes stream-bed deposits of sand, gravel, cobbles and older terrace deposits</i>   |            |
|                        |  | Talus and landslide material  |            |
| Tertiary               |  | Terrace deposits<br><i>Sand, gravel and cobbles on rock shelves above river level, small remnants not all mapped separately</i>   | TERTIARY   |
|                        |  | Basaltic breccia and agglomerate<br><i>Basaltic breccia and agglomerate, in part massive and coherent, commonly somewhat decomposed. Darker pattern indicates fairly continuous exposures; lighter pattern indicates areas of few exposures</i> |            |
|                        |  | Tillamook Volcanic Series<br><i>Solid color denotes main areas of bedrock exposure, ruled pattern indicates areas of scattered bedrock exposure or areas of thick vegetation and few bedrock exposures</i>                                      |            |

Contact  
Dashed where approximately located

Fault, showing dip  
Dashed where approximately located; short dashed where inferred. U, upthrown side; D, downthrown side

Lineament  
Indicates possible bedrock fractures or shear zone. Plotted from aerial photographs

Strike and dip of flow layers

Strike and dip of beds

Flow lineation and plunge

Vertical joint

Joint system

Quarry

Spring

Prospective location of dam

Topography by R. O. Helland, C. B. Cox, and B. F. O'Mealy, 1936, and D. W. Neal, 1957

GEOLOGIC MAPS AND SECTIONS OF SALMONBERRY, UPPER WAKEFIELD, NEHALEM FALLS, AND STONEHILL DAMSITES, OREGON

INTERIOR—GEOLOGICAL SURVEY, WASHINGTON, D. C.—1965—C85027

Geology by A. M. Piper, 1937, and D. L. Gaskill, 1957

