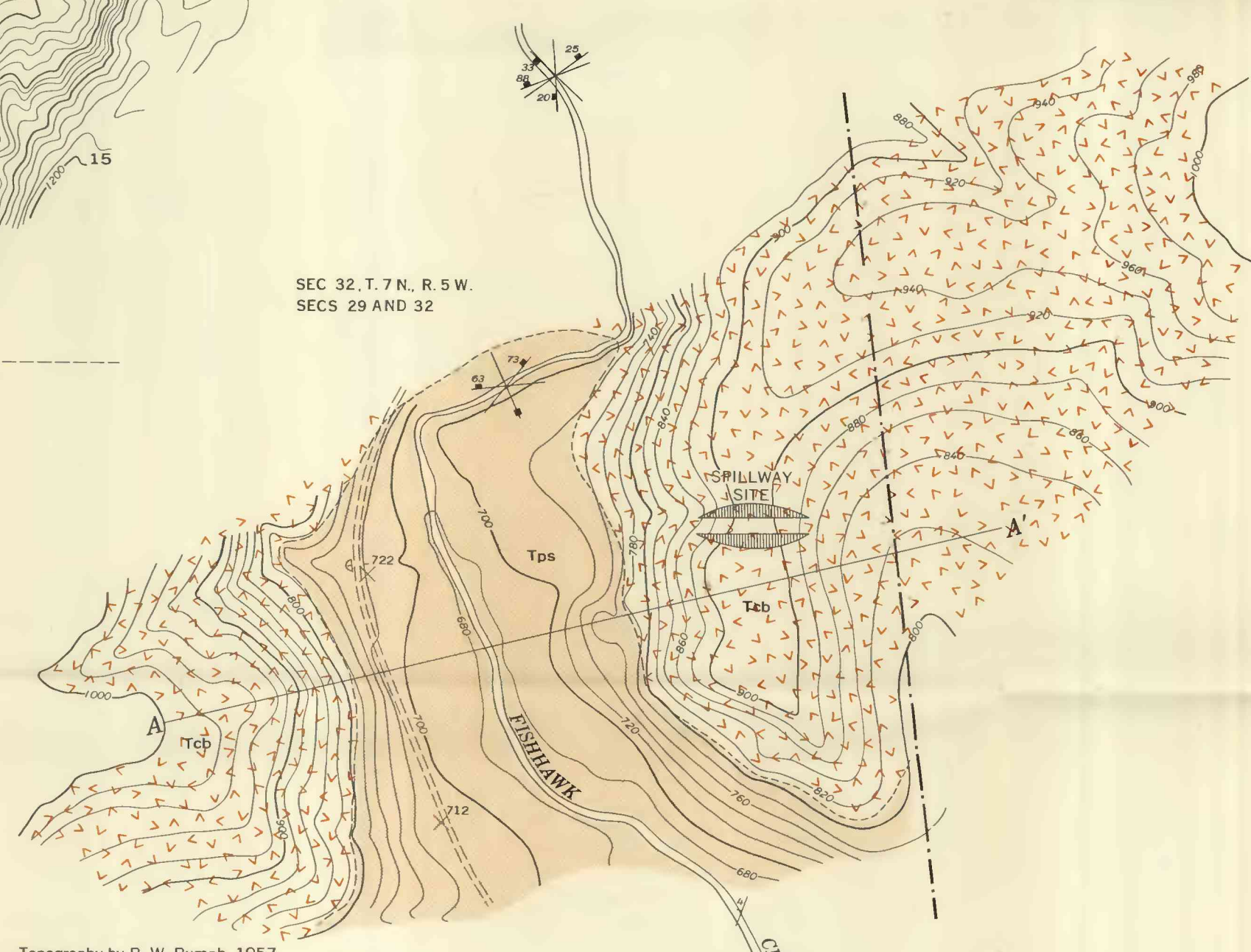
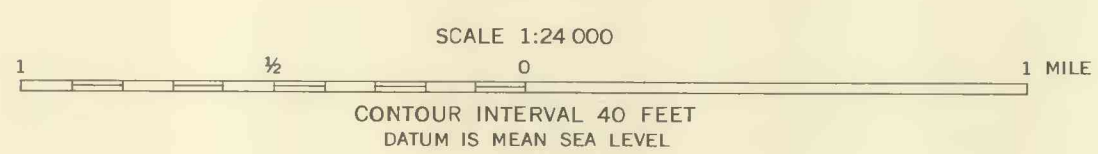
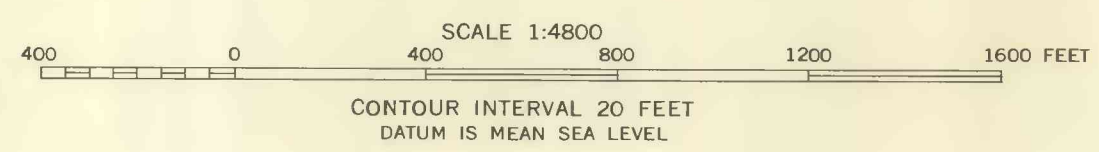




FISHHAWK CREEK AND VICINITY



FISHHAWK CREEK DAMSITE
MILE 8.3



EXPLANATION

- Columbia River Basalt and associated intrusive rocks
- Scappoose and Pittsburg Bluff Formations
Includes some more recent landslide material and valley alluvium
- Contact
Dashed where approximately located; short dashed where concealed
- Fault, showing dip
- Lineament
Indicates possible bedrock fractures or shear zone. Plotted from aerial photographs
- Strike and dip of beds
- Horizontal beds
- Vertical joint
- Joint system
- Locality referred to in report
- Quarry

Miocene (?)
Oligocene

TERTIARY

Mileage is a continuation of 1934 survey
Nehalem River from Mohler to Timber, Oregon

GEOLOGIC MAPS AND SECTIONS OF FISHHAWK CREEK AND VICINITY AND FISHHAWK CREEK DAMSITE, OREGON