

CEDARHURST TO WOODMERE, N. Y., SHOWING (A) POSITION OF SALTY-WATER WEDGES, (B) HEADS AND COMPONENTS OF FLOW IN MARCH 1961

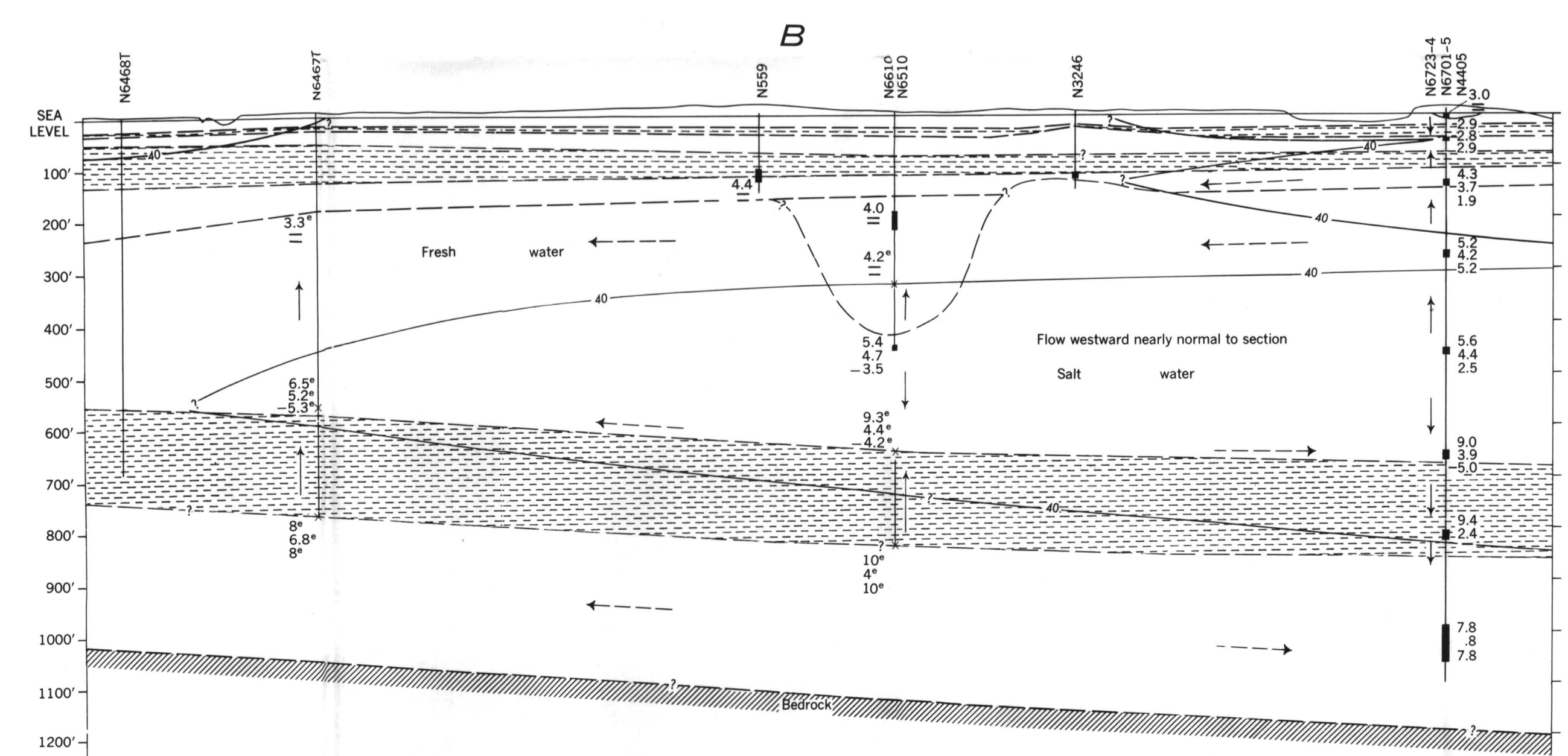
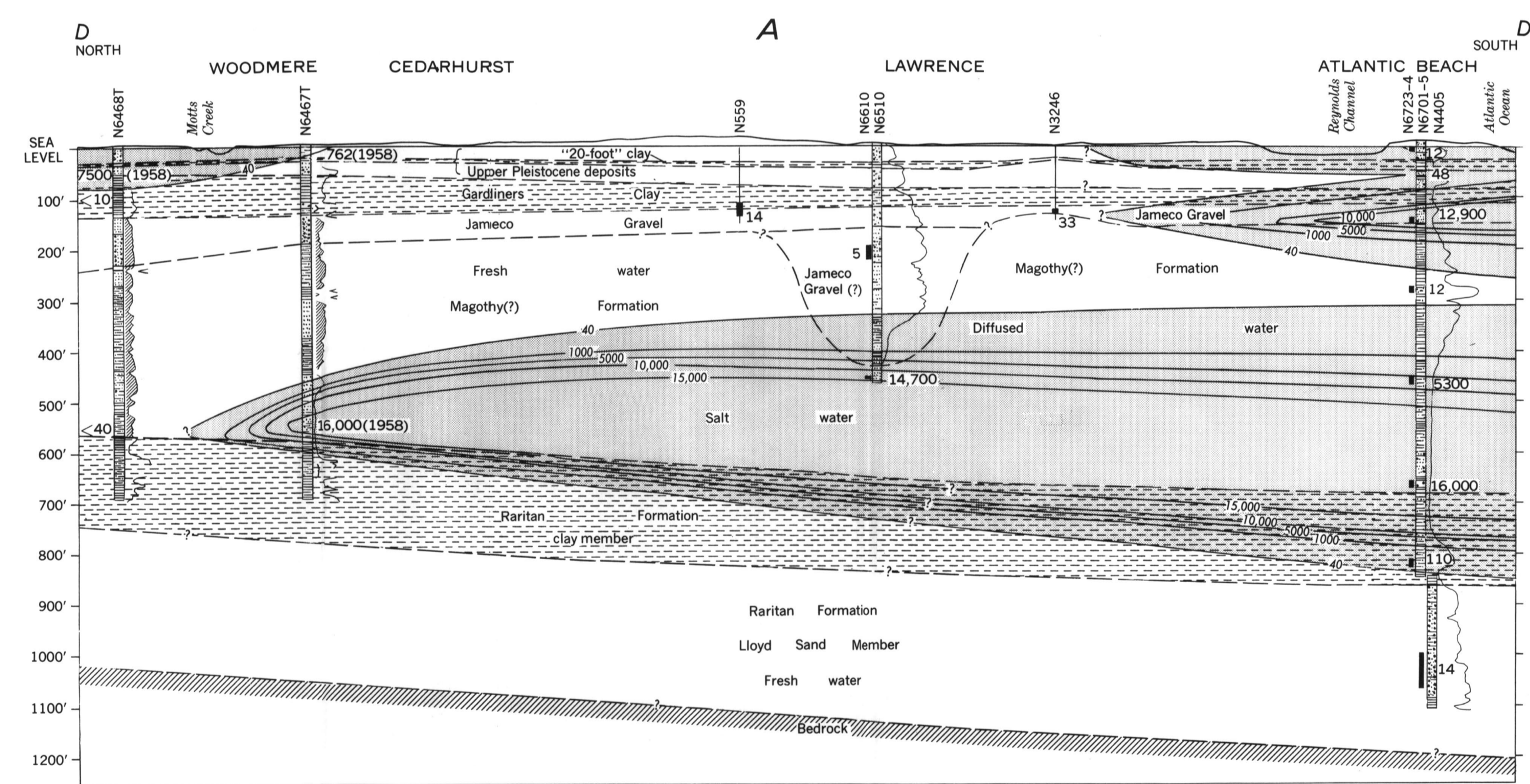
0 1/4 1/2 MILE

FAR ROCKAWAY TO BAY PARK, N. Y., SHOWING (A) POSITION OF SALTY-WATER WEDGES, (B) HEADS AND COMPONENTS OF FLOW IN MARCH 1961

0 1/2 2 MILES

EXPLANATION

- Resistivity curve of electric log
  - Diagonally ruled area indicates reduction in scale of resistivity curve
  - Isochlor, in parts per million
  - Well number
  - Test-hole number
  - Head
  - Point selected for determination of head
  - Direction of flow in plane of section
  - Direction of flow projected to plane of section
  - Direction of vertical component of flow
  - Points used for determination of direction of flow in diffused water
- Heads and altitudes given in feet with reference to mean sea level at Sandy Hook, N. J.



GEOHYDROLOGIC SECTIONS FROM FAR ROCKAWAY TO BAY PARK, CEDARHURST TO WOODMERE, AND WOODMERE TO ATLANTIC BEACH, NEW YORK

WOODMERE TO ATLANTIC BEACH, N. Y., SHOWING (A) POSITION OF SALTY-WATER WEDGES (B) HEADS AND COMPONENTS OF FLOW IN MARCH 1961

0 1/2 1 MILE