
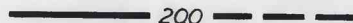



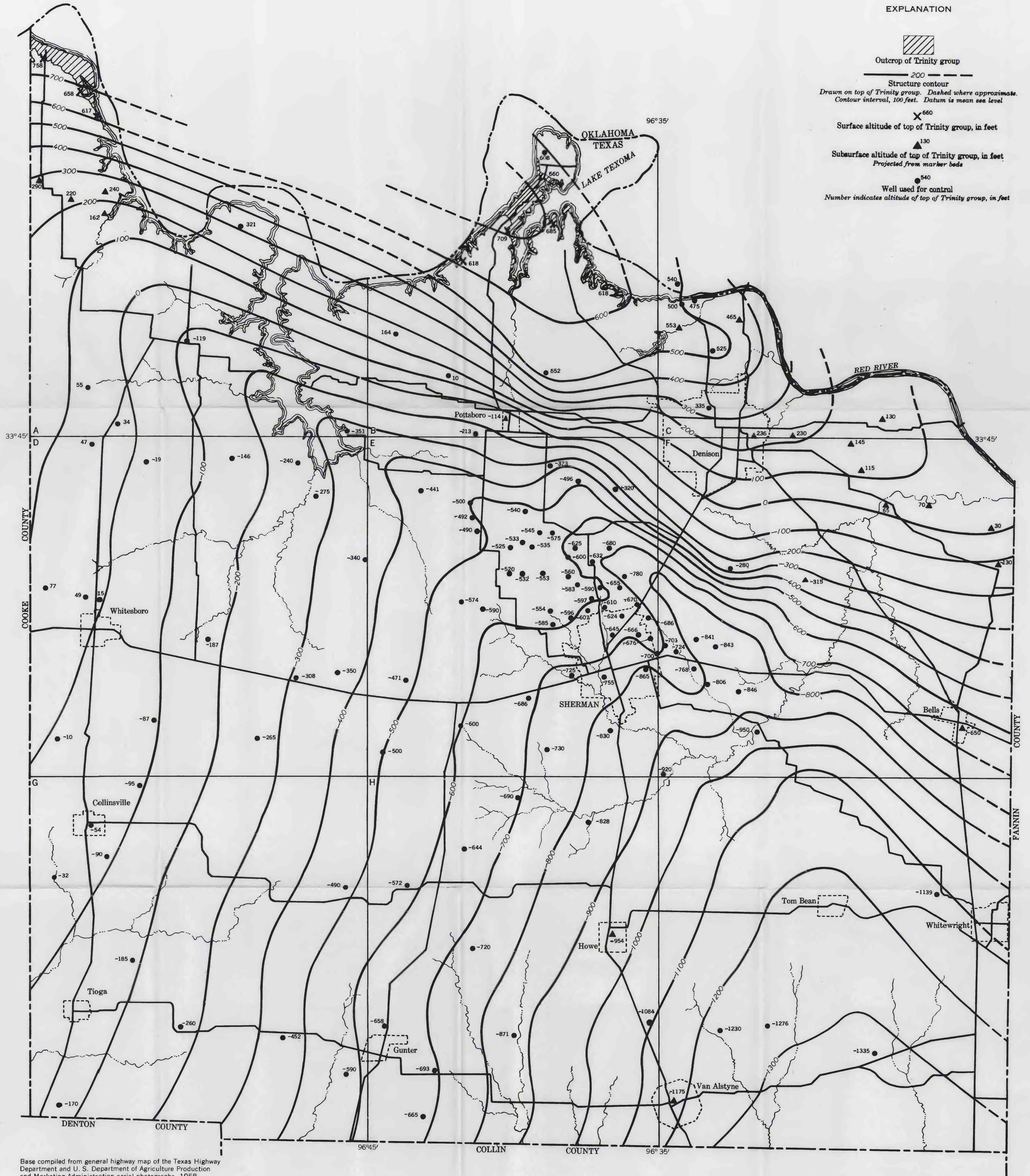


EXPLANATION

-  Outcrop of Trinity group
-  200 Structure contour
- Drawn on top of Trinity group. Dashed where approximate.*
- Contour interval, 100 feet. Datum is mean sea level*
-  660 Surface altitude of top of Trinity group, in feet
-  130 Subsurface altitude of top of Trinity group, in feet
- Projected from marker beds*
-  540 Well used for control
- Number indicates altitude of top of Trinity group, in feet*



Base compiled from general highway map of the Texas Highway Department and U. S. Department of Agriculture Production and Marketing Administration aerial photographs, 1958

ALTITUDE OF THE TOP OF THE TRINITY GROUP, GRAYSON COUNTY, TEXAS

